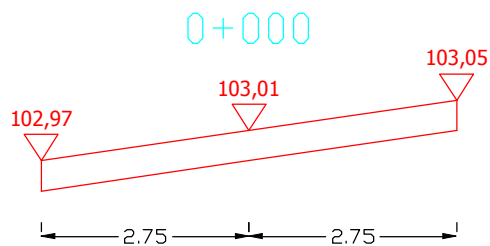
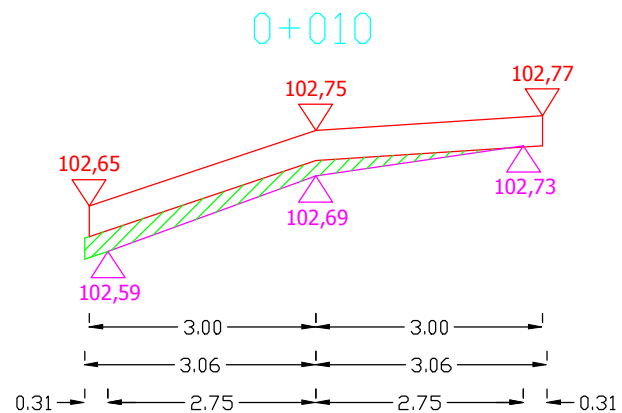


PRZEKROJE POPRZECZNE DROGI WOJEWÓDZKIEJ NR 651 OD KM 47+870 DO KM 48+860

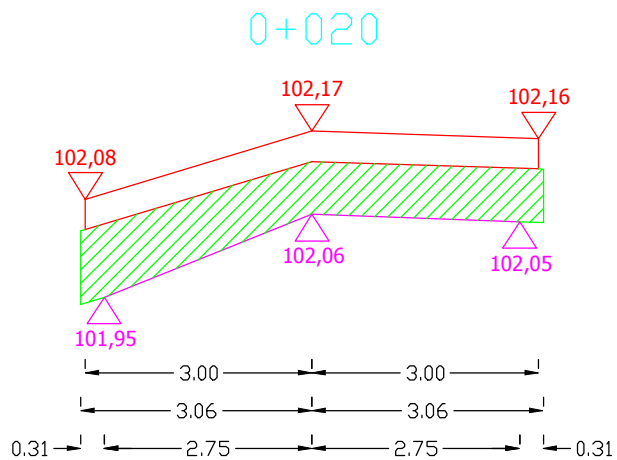
SKALA 1:10/100



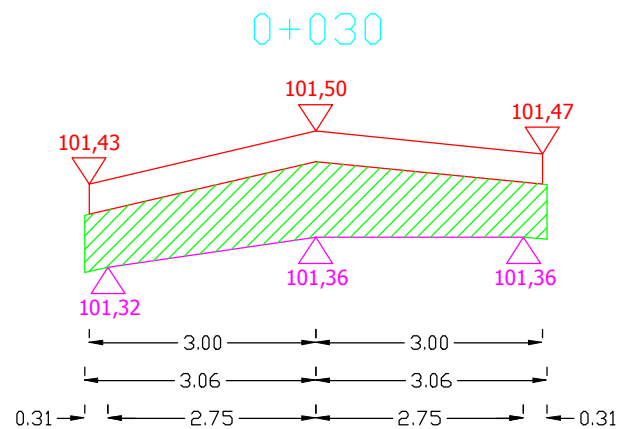
Pwyr.=0,0000 m²



Pwyr.=0,1006 m²



Pwyr.=0,4761 m²



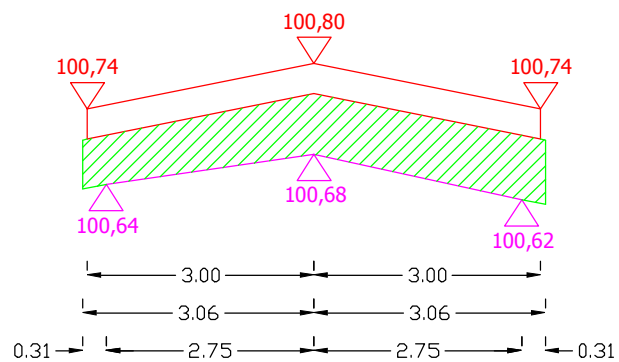
Pwyr.=0,5249 m²

Sporządził:

PRZEKROJE POPRZECZNE DROGI WOJEWÓDZKIEJ NR 651 OD KM 47+870 DO KM 48+860

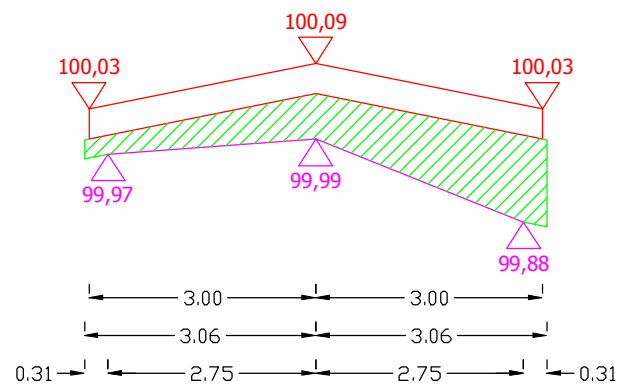
SKALA 1:10/100

0+040



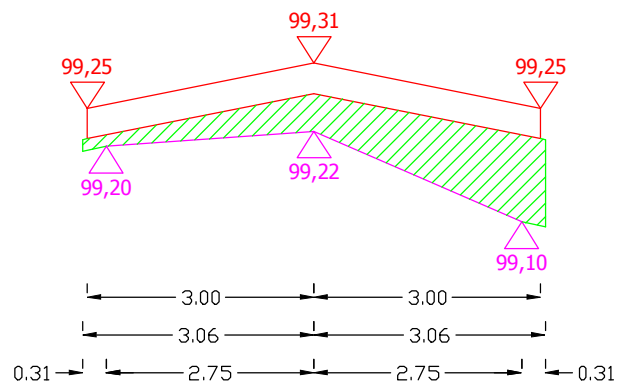
Pwyr.=0,4728 m²

0+050



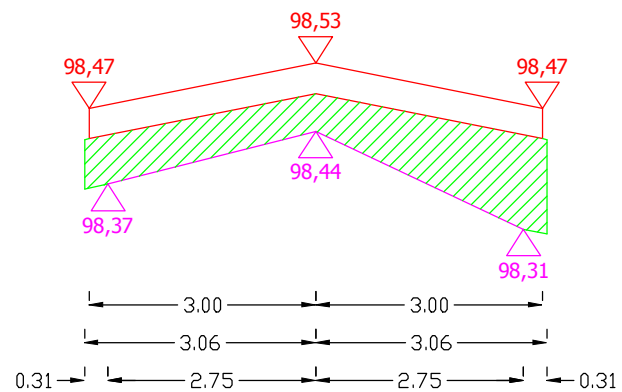
Pwyr.=0,4009 m²

0+060



Pwyr.=0,3566 m²

0+070



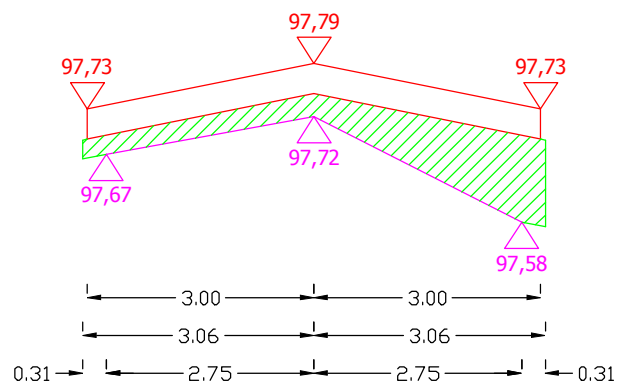
Pwyr.=0,4577 m²

Sporządził:

PRZEKROJE POPRZECZNE DROGI WOJEWÓDZKIEJ NR 651 OD KM 47+870 DO KM 48+860

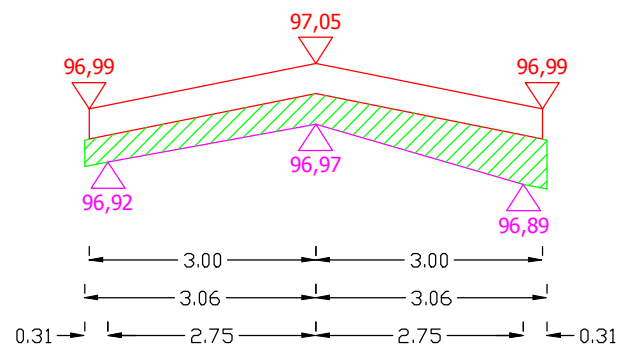
SKALA 1:10/100

0+080



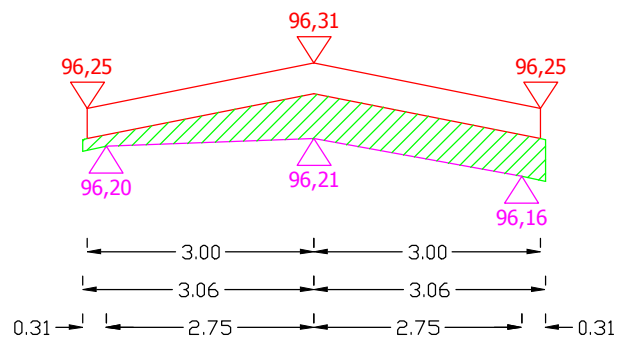
Pwyr.=0,3184 m²

0+090



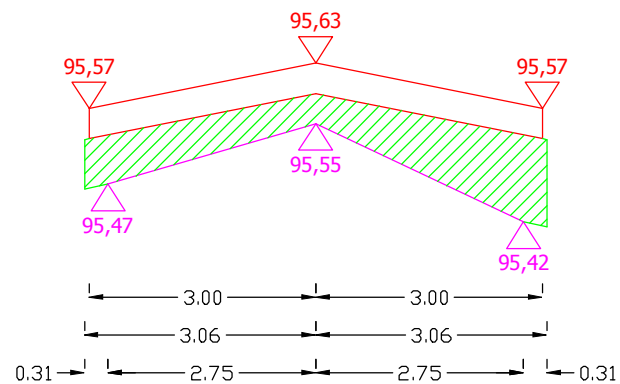
Pwyr.=0,2785 m²

0+100



Pwyr.=0,2830 m²

0+110



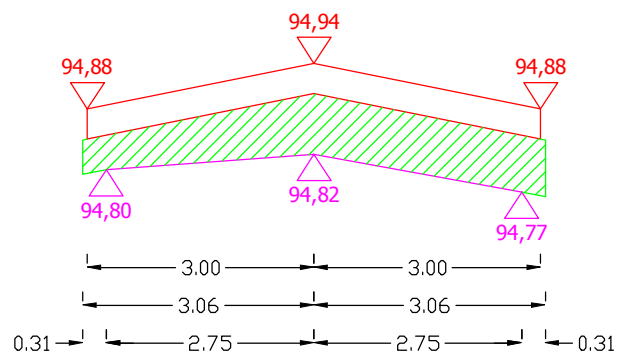
Pwyr.=0,4133 m²

Sporządził:

PRZEKROJE POPRZECZNE DROGI WOJEWÓDZKIEJ NR 651 OD KM 47+870 DO KM 48+860

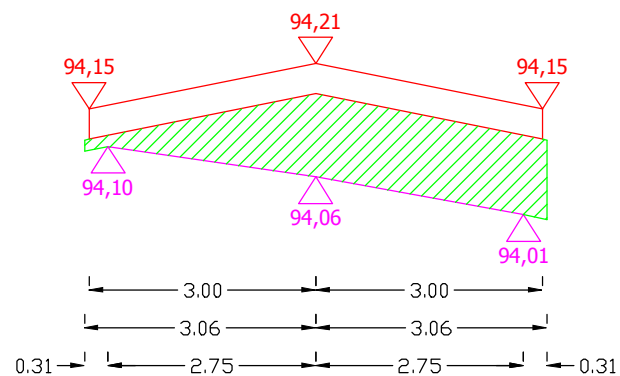
SKALA 1:10/100

0+120



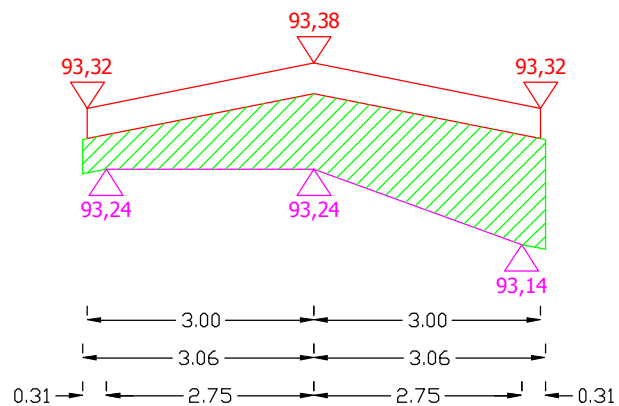
Pwyr.=0,4222 m²

0+130



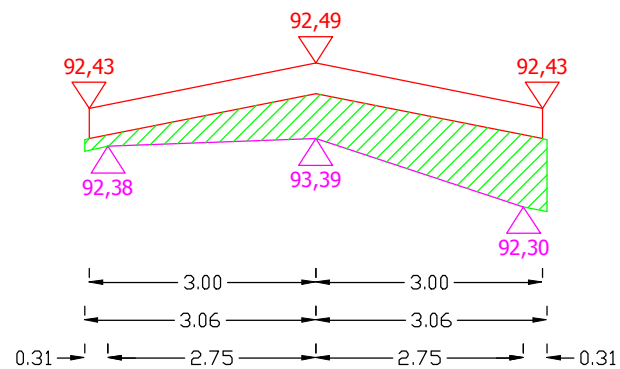
Pwyr.=0,5047 m²

0+140



Pwyr.=0,5952 m²

0+150

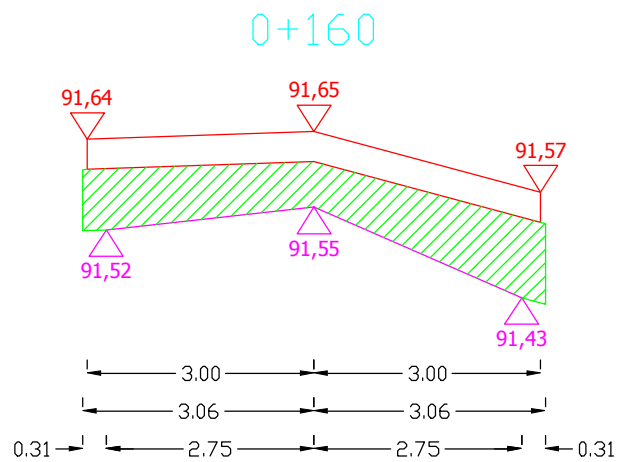


Pwyr.=0,3504 m²

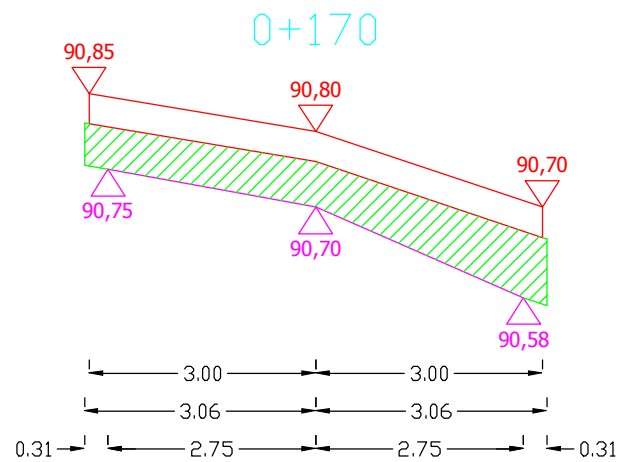
Sporządził:

PRZEKROJE POPRZECZNE DROGI WOJEWÓDZKIEJ NR 651 OD KM 47+870 DO KM 48+860

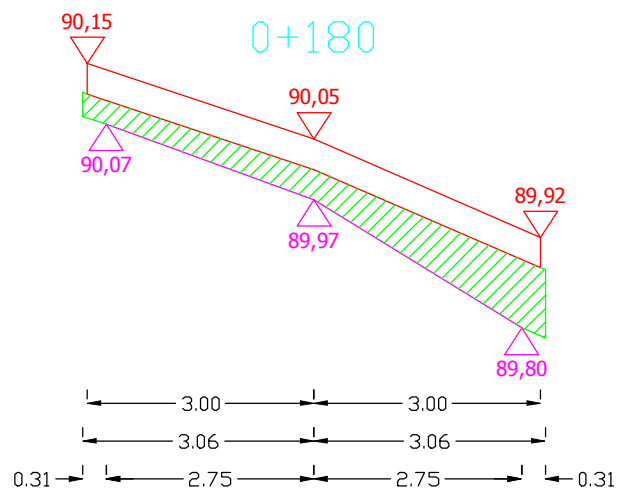
SKALA 1:10/100



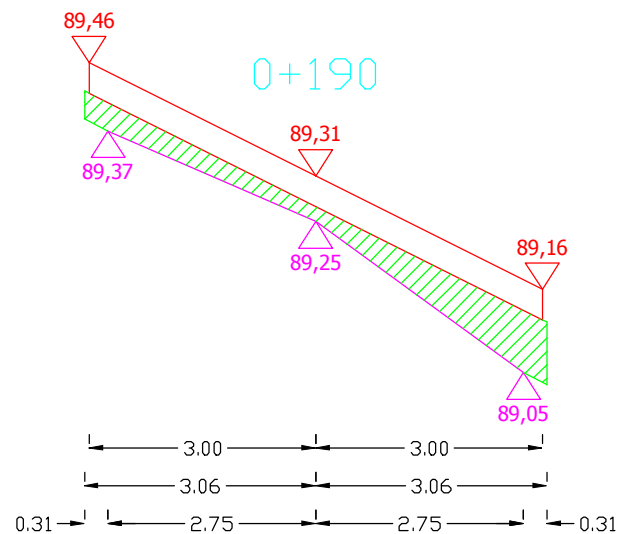
Pwyr.=0,4809 m²



Pwyr.=0,4079 m²



Pwyr.=0,3164 m²

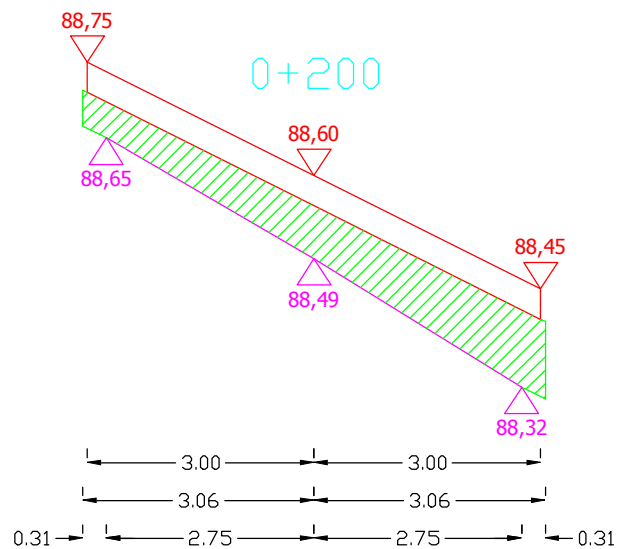


Pwyr.=0,2572 m²

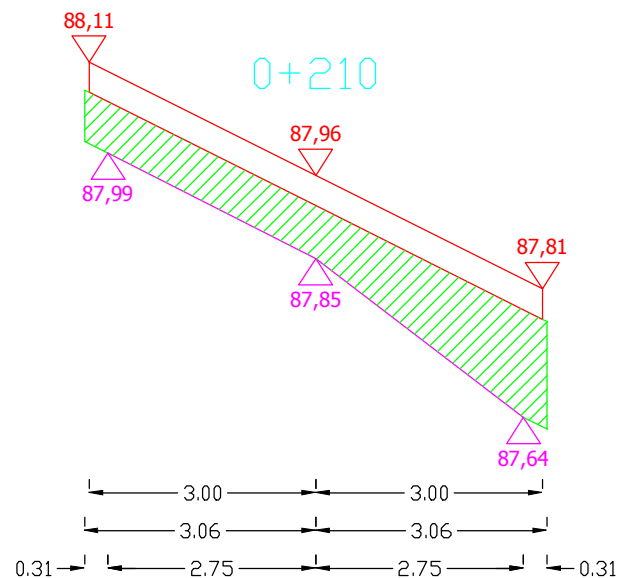
Sporządził:

PRZEKROJE POPRZECZNE DROGI WOJEWÓDZKIEJ NR 651 OD KM 47+870 DO KM 48+860

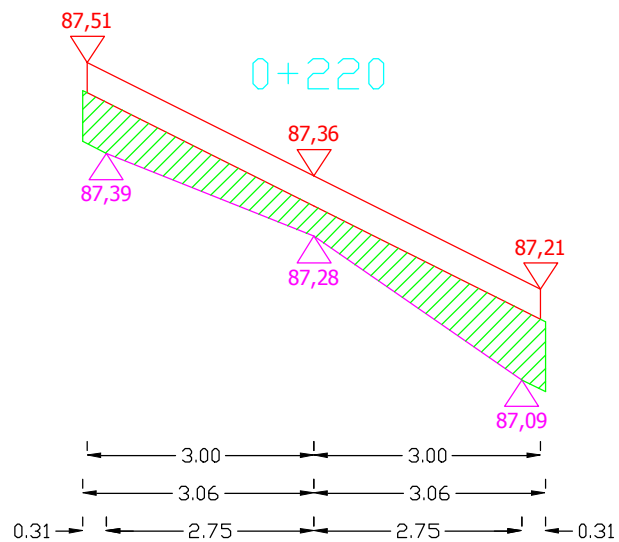
SKALA 1:10/100



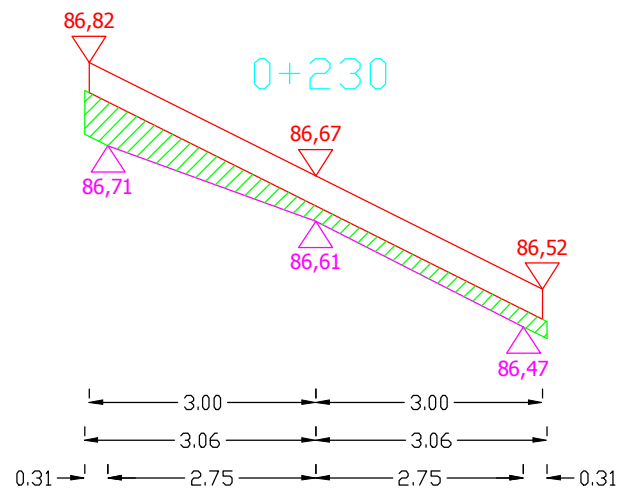
Pwyr.=0,4453 m²



Pwyr.=0,5464 m²



Pwyr.=0,3796 m²

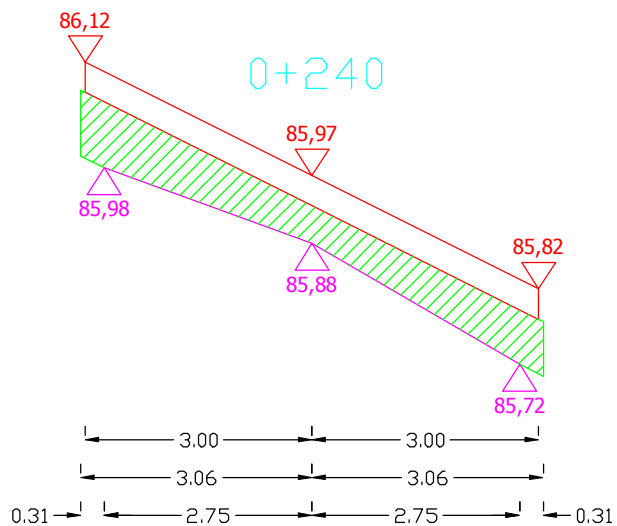


Pwyr.=0,1898 m²

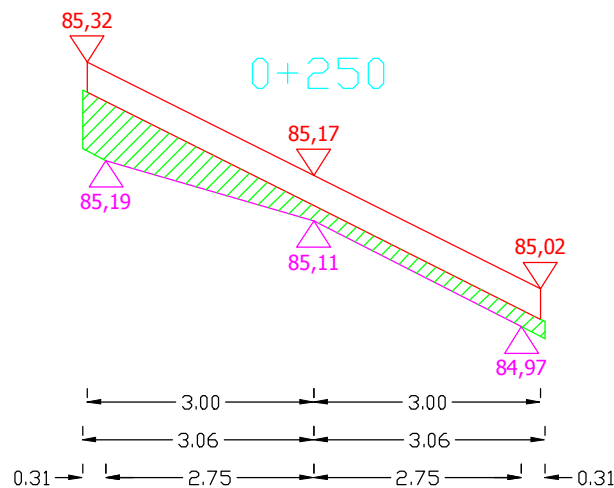
Sporządził:

PRZEKROJE POPRZECZNE DROGI WOJEWÓDZKIEJ NR 651 OD KM 47+870 DO KM 48+860

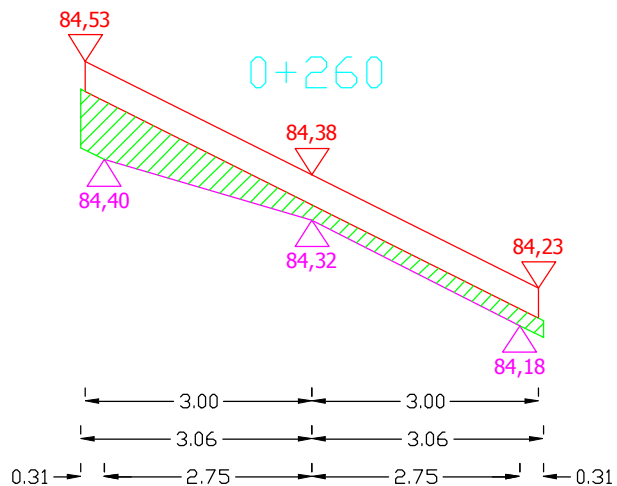
SKALA 1:10/100



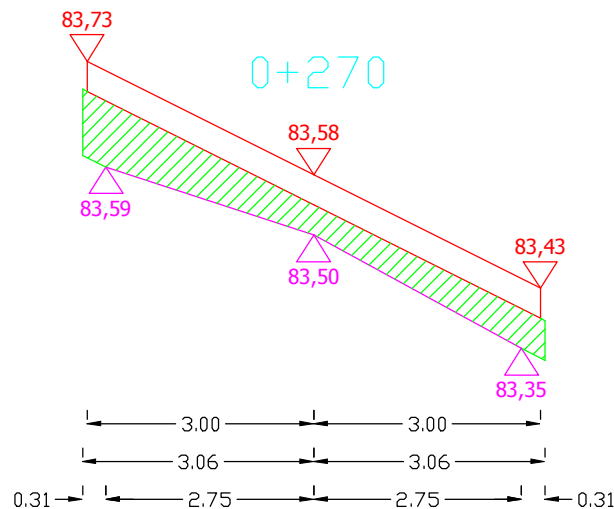
Pwyr.=0,4071 m²



Pwyr.=0,2235 m²



Pwyr.=0,2235 m²

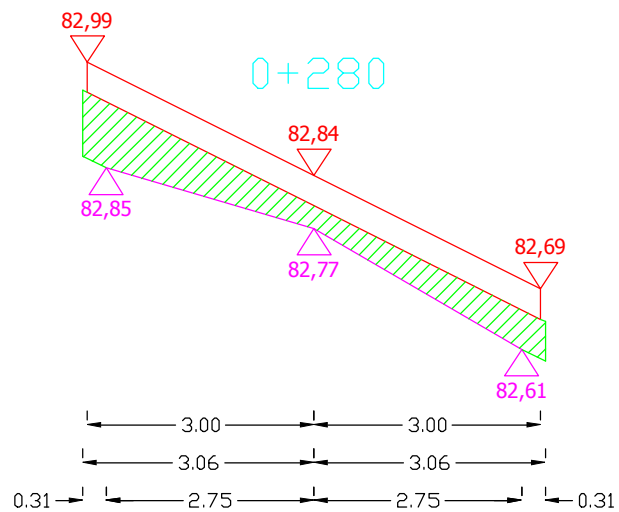


Pwyr.=0,3459 m²

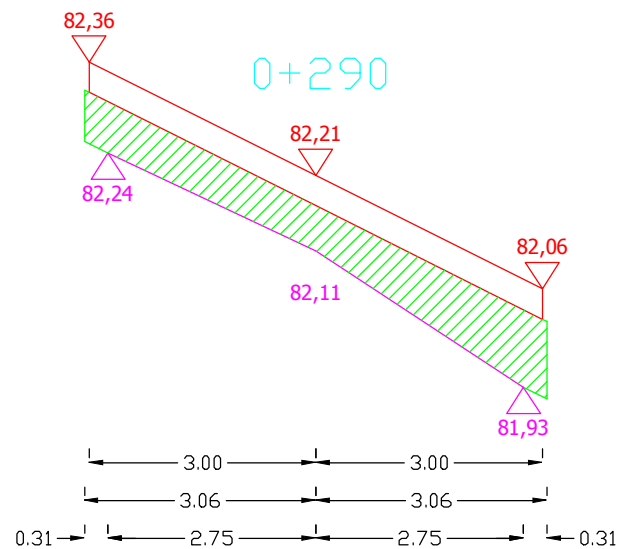
Sporządził:

PRZEKROJE POPRZECZNE DROGI WOJEWÓDZKIEJ NR 651 OD KM 47+870 DO KM 48+860

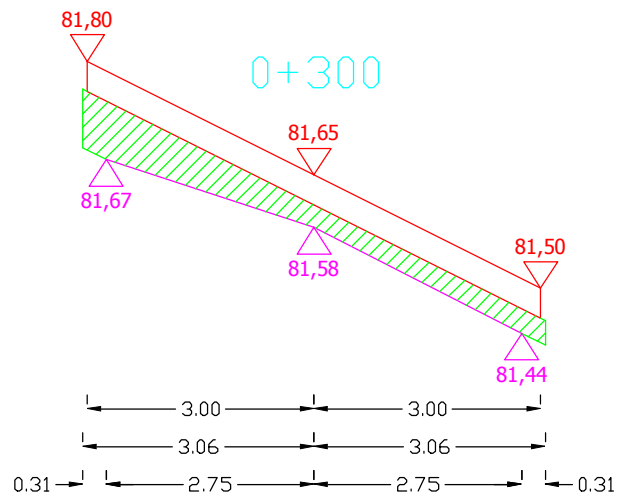
SKALA 1:10/100



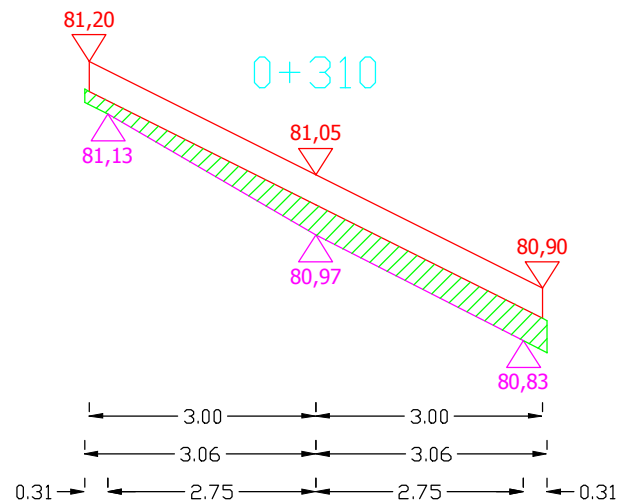
$P_{wyr.} = 0,3184 \text{ m}^2$



$P_{wyr.} = 0,4516 \text{ m}^2$



$P_{wyr.} = 0,2679 \text{ m}^2$

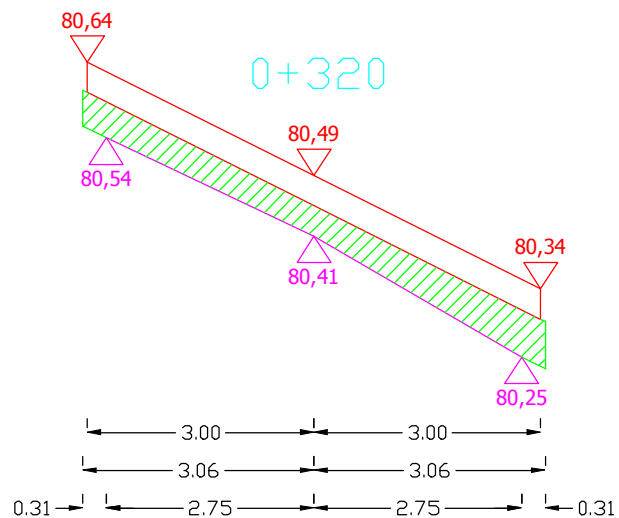


$P_{wyr.} = 0,2111 \text{ m}^2$

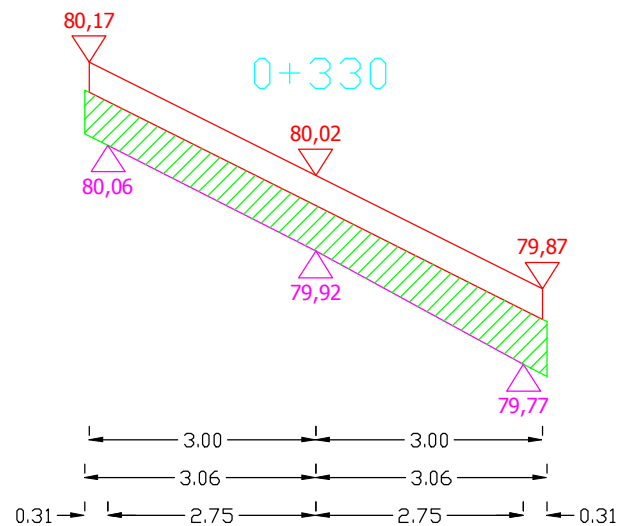
Sporządził:

PRZEKROJE POPRZECZNE DROGI WOJEWÓDZKIEJ NR 651 OD KM 47+870 DO KM 48+860

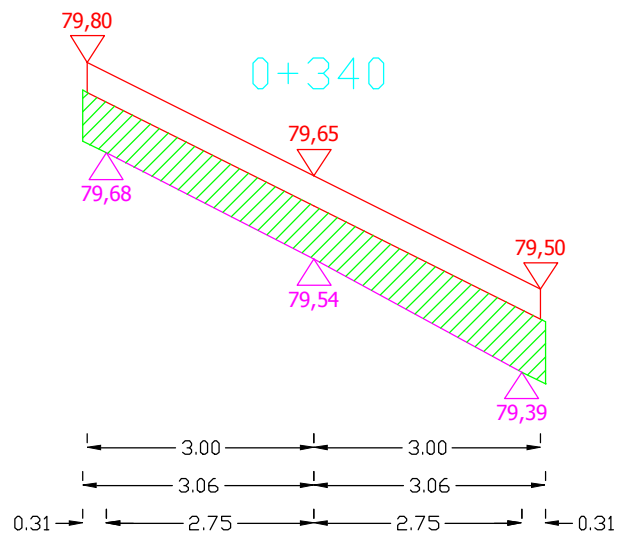
SKALA 1:10/100



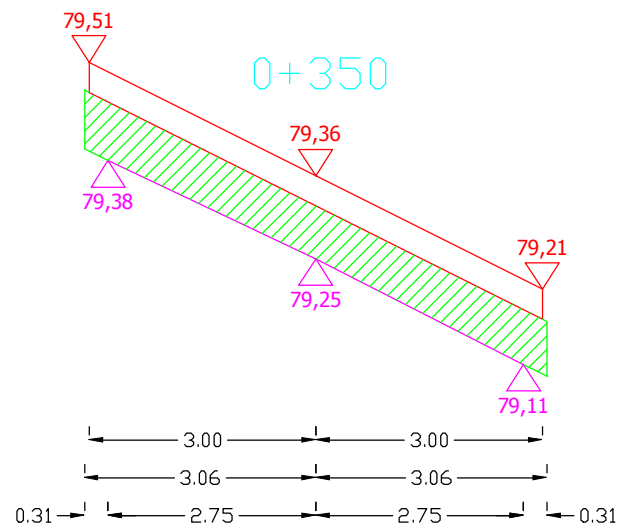
Pwyr.=0,2954 m²



Pwyr.=0,3841 m²



Pwyr.=0,4453 m²

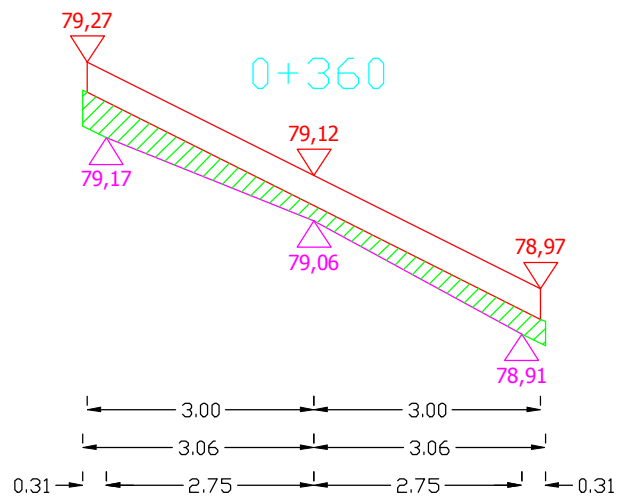


Pwyr.=0,4453 m²

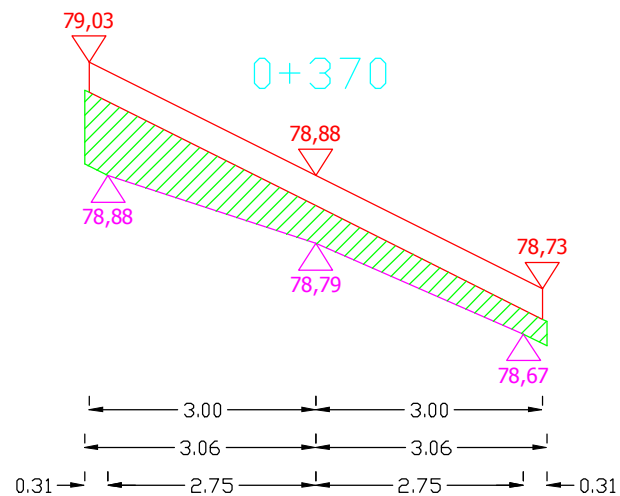
Sporządził:

PRZEKROJE POPRZECZNE DROGI WOJEWÓDZKIEJ NR 651 OD KM 47+870 DO KM 48+860

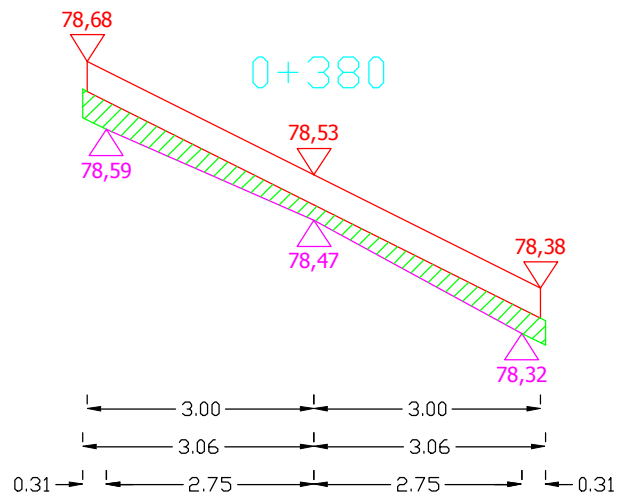
SKALA 1:10/100



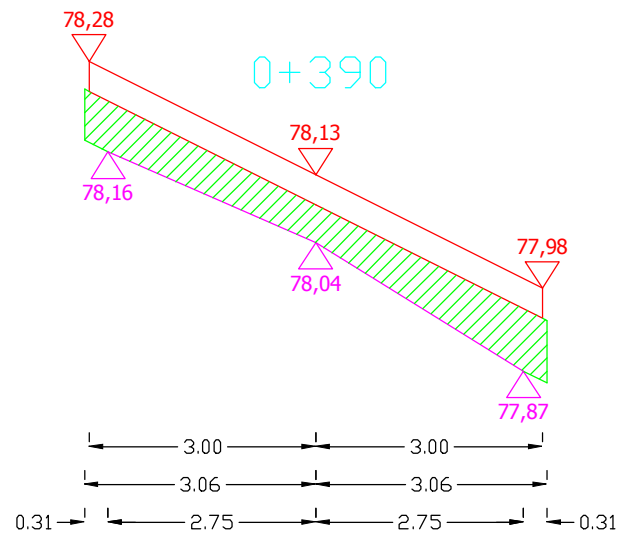
Pwyr.=0,1898 m²



Pwyr.=0,3566 m²



Pwyr.=0,1730 m²

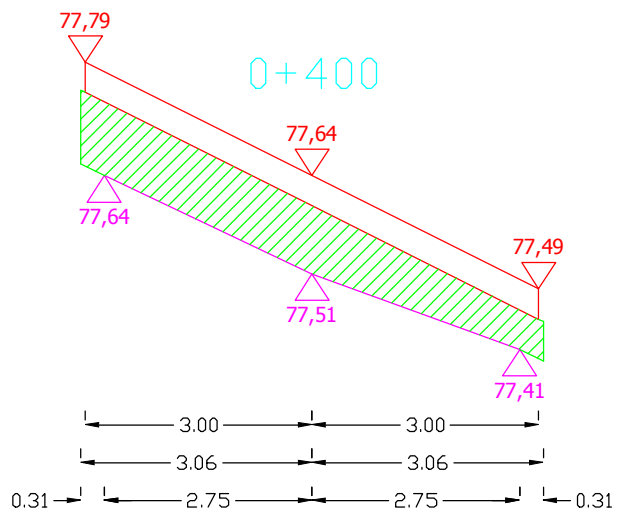


Pwyr.=0,3903 m²

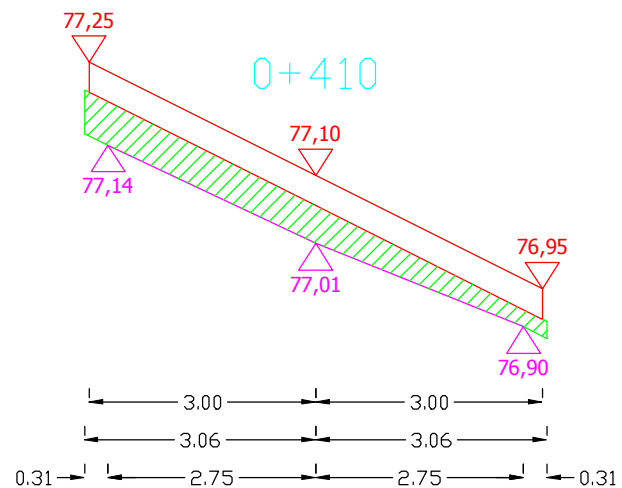
Sporządził:

PRZEKROJE POPRZECZNE DROGI WOJEWÓDZKIEJ NR 651 OD KM 47+870 DO KM 48+860

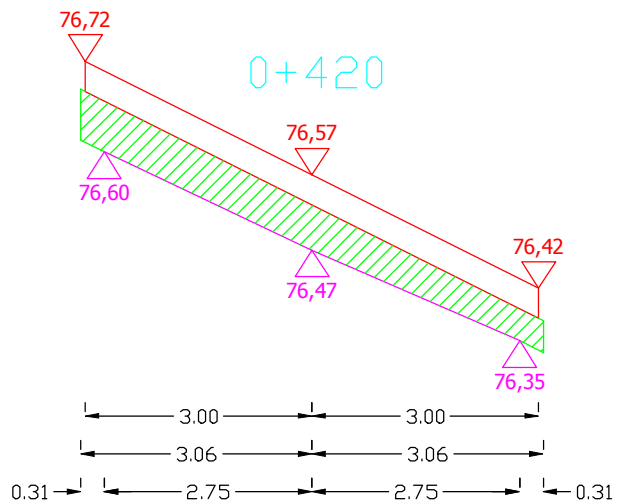
SKALA 1:10/100



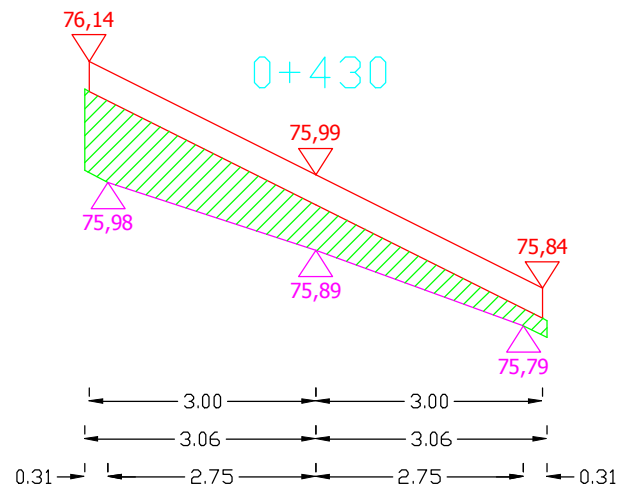
Pwyr.=0,5003 m²



Pwyr.=0,2723 m²



Pwyr.=0,3505 m²

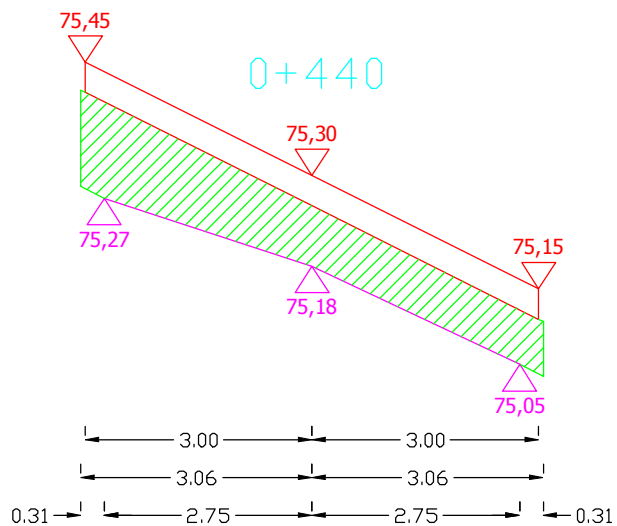


Pwyr.=0,3841 m²

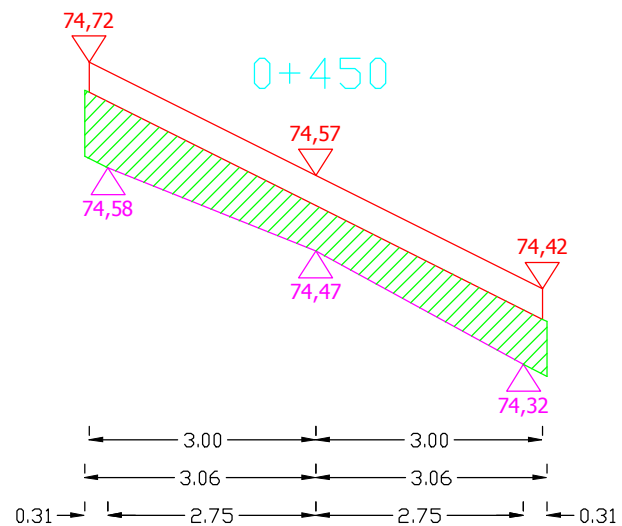
Sporządził:

PRZEKROJE POPRZECZNE DROGI WOJEWÓDZKIEJ NR 651 OD KM 47+870 DO KM 48+860

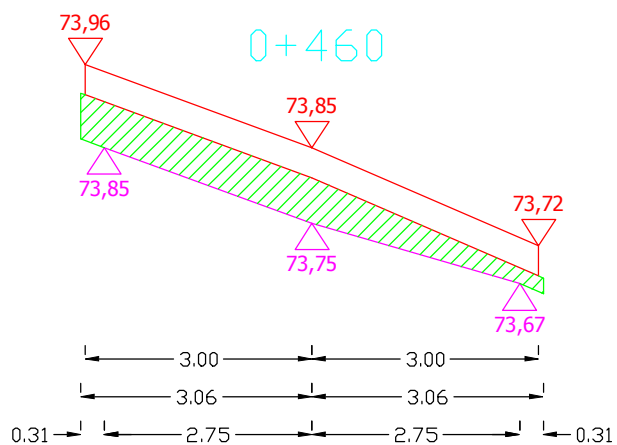
SKALA 1:10/100



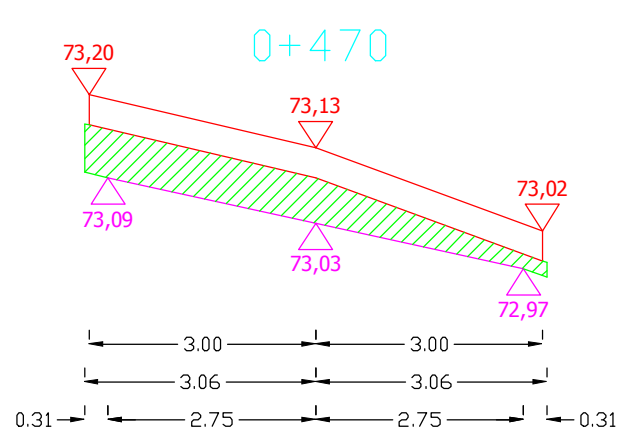
Pwyr.=0,5570 m²



Pwyr.=0,4346 m²



Pwyr.=0,3026 m²

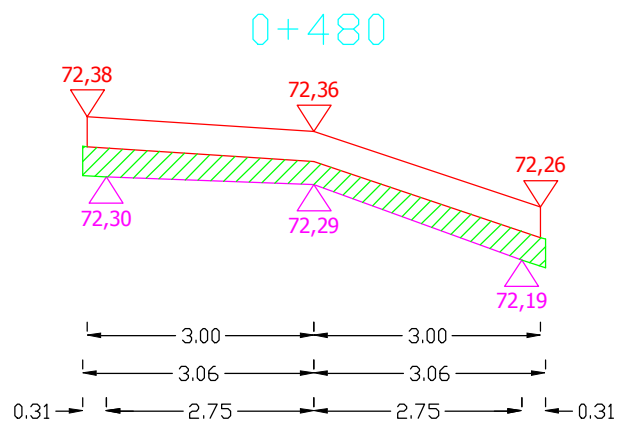


Pwyr.=0,3054 m²

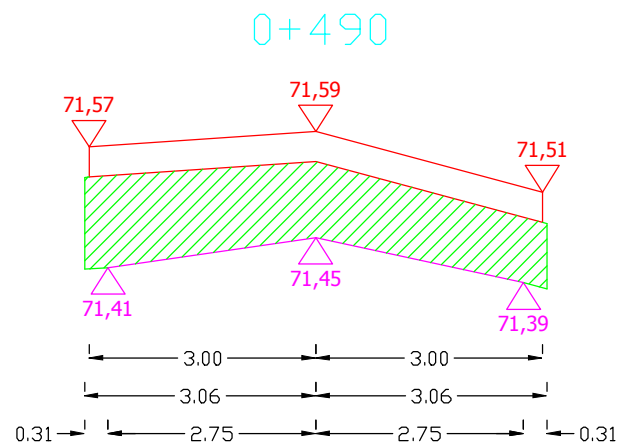
Sporządził:

PRZEKROJE POPRZECZNE DROGI WOJEWÓDZKIEJ NR 651 OD KM 47+870 DO KM 48+860

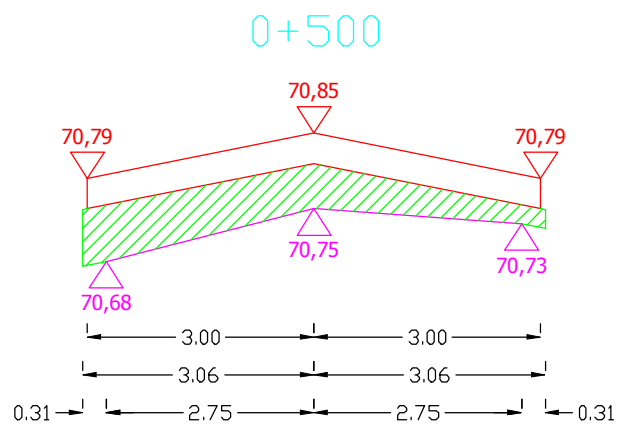
SKALA 1:10/100



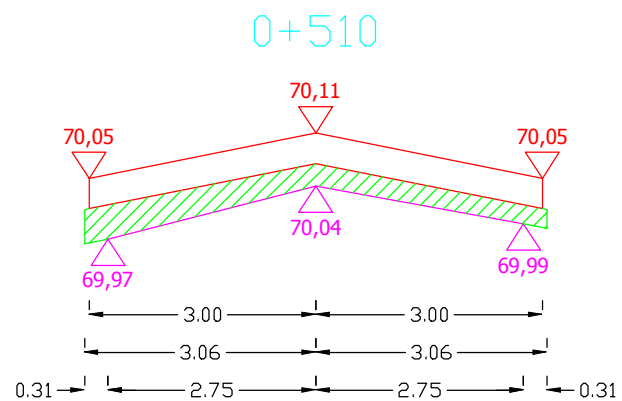
Pwyr.=0,2117 m²



Pwyr.=0,6260 m²



Pwyr.=0,3335 m²



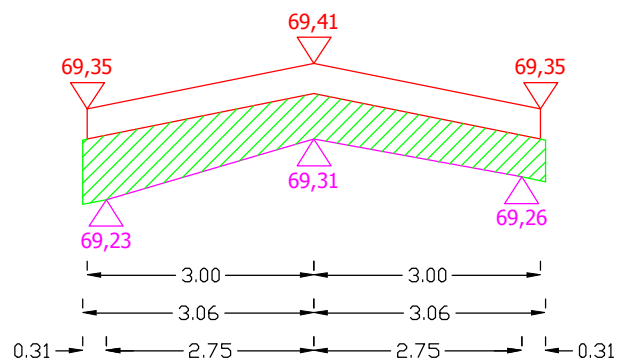
Pwyr.=0,2005 m²

Sporządził:

PRZEKROJE POPRZECZNE DROGI WOJEWÓDZKIEJ NR 651 OD KM 47+870 DO KM 48+860

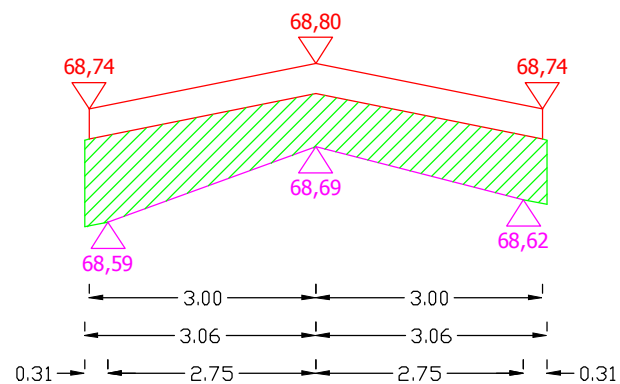
SKALA 1:10/100

0+520



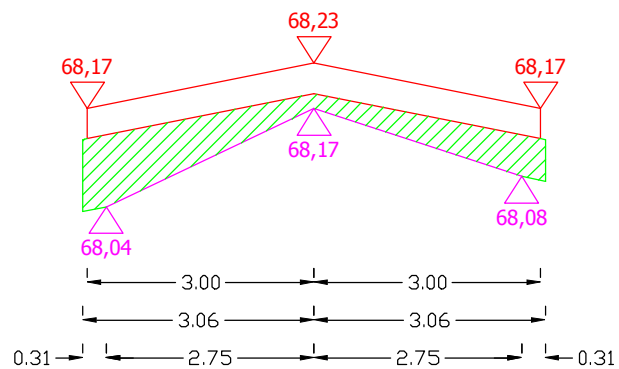
Pwyr.=0,4009 m²

0+530



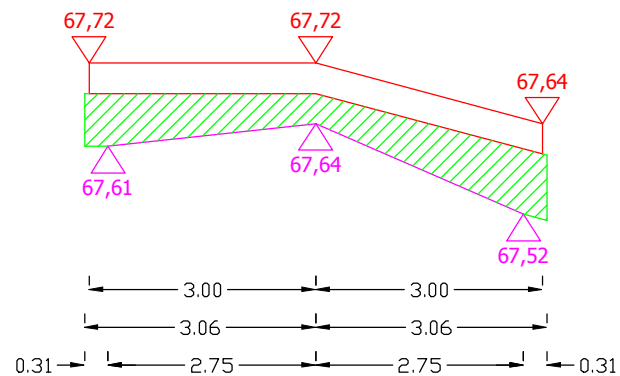
Pwyr.=0,5295 m²

0+540



Pwyr.=0,3078 m²

0+550

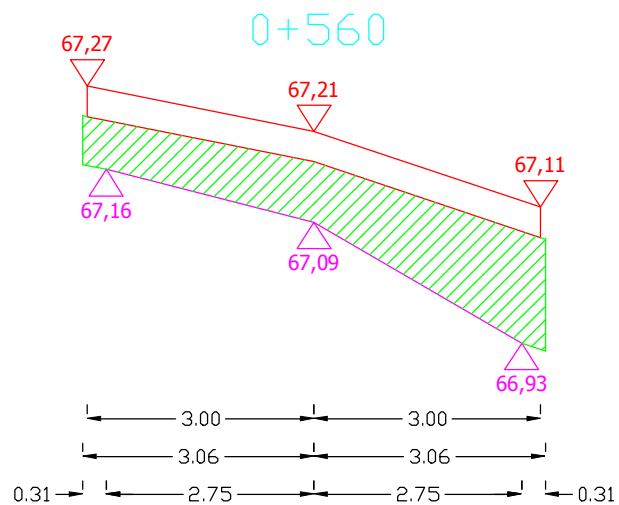


Pwyr.=0,3740 m²

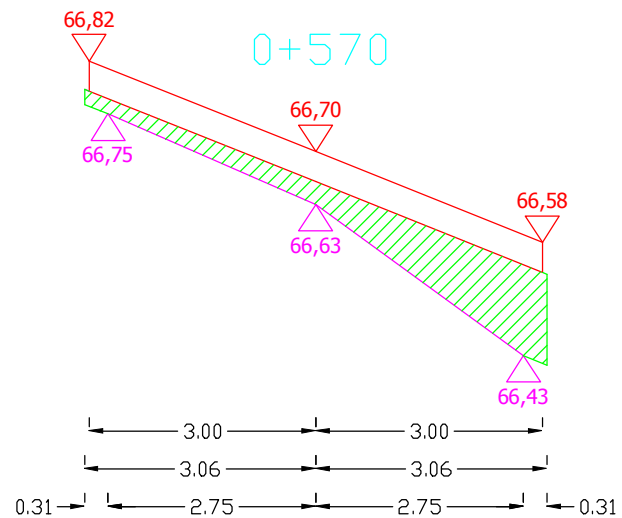
Sporządził:

PRZEKROJE POPRZECZNE DROGI WOJEWÓDZKIEJ NR 651 OD KM 47+870 DO KM 48+860

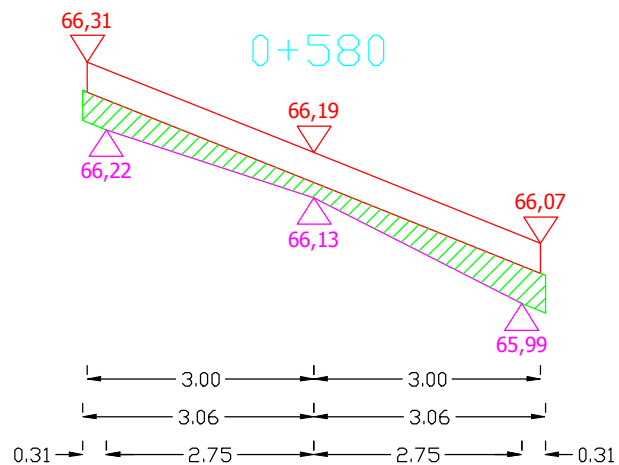
SKALA 1:10/100



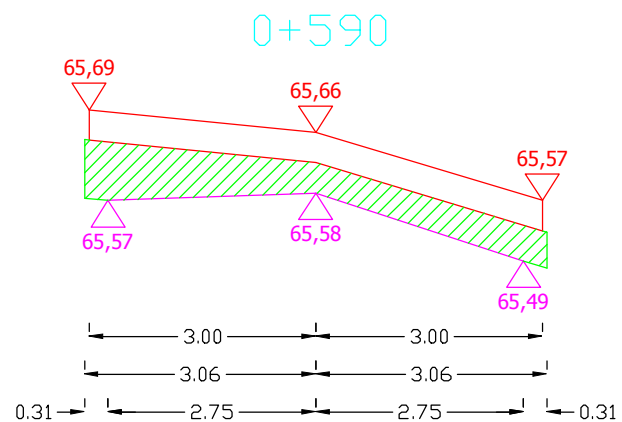
Pwyr.=0,5795 m²



Pwyr.=0,3184 m²



Pwyr.=0,2067 m²



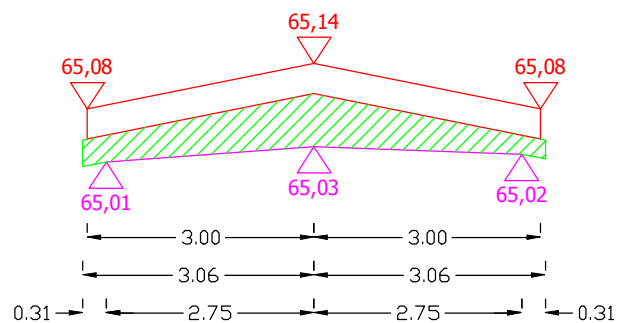
Pwyr.=0,3206 m²

Sporządził:

PRZEKROJE POPRZECZNE DROGI WOJEWÓDZKIEJ NR 651 OD KM 47+870 DO KM 48+860

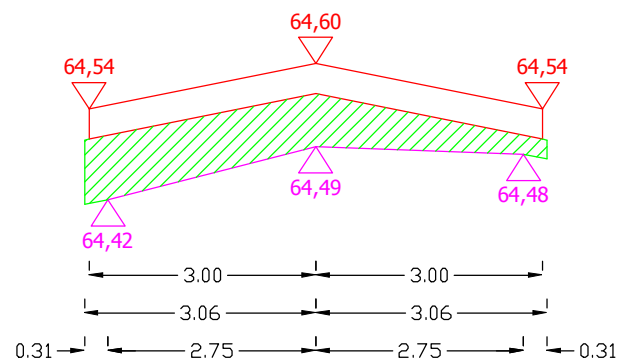
SKALA 1:10/100

0+600



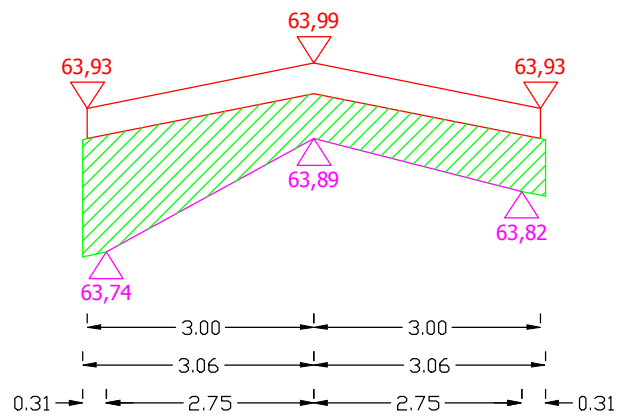
Pwyr.=0,2936 m²

0+610



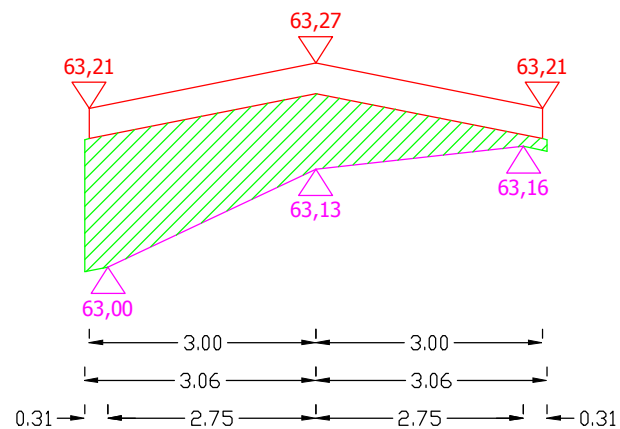
Pwyr.=0,3779 m²

0+620



Pwyr.=0,5526 m²

0+630

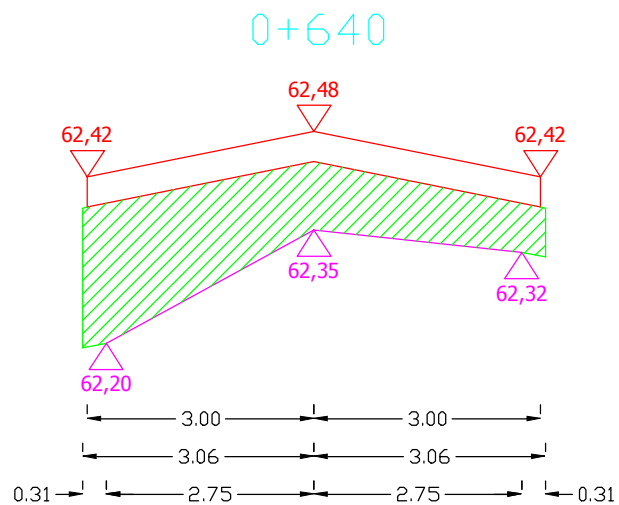


Pwyr.=0,5952 m²

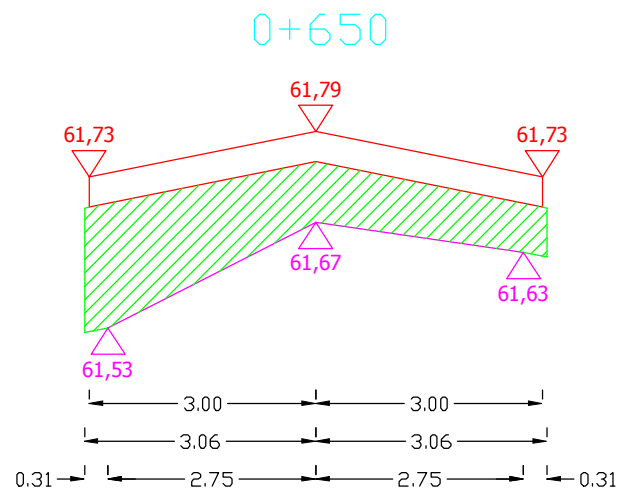
Sporządził:

PRZEKROJE POPRZECZNE DROGI WOJEWÓDZKIEJ NR 651 OD KM 47+870 DO KM 48+860

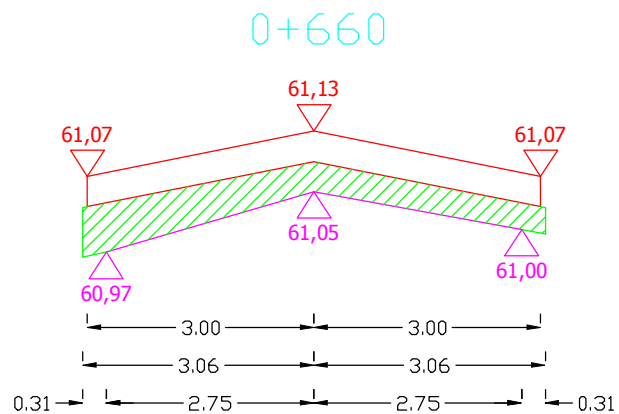
SKALA 1:10/100



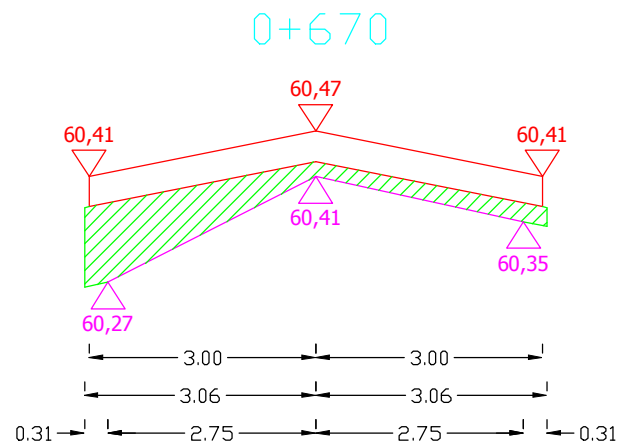
Pwyr.=0,6688 m²



Pwyr.=0,6076 m²



Pwyr.=0,2785 m²



Pwyr.=0,2741 m²

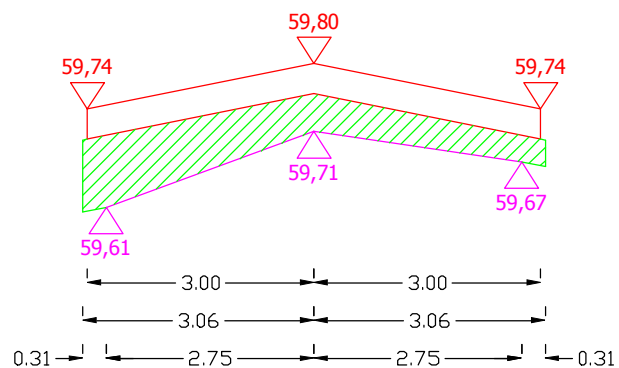
Sporządził:

PRZEKROJE POPRZECZNE DROGI WOJEWÓDZKIEJ NR 651 OD KM 47+870 DO KM 48+860

SKALA 1:10/100

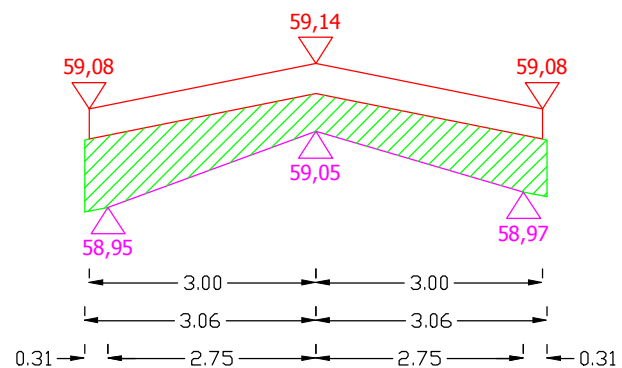
0+680

Pwyr.=0,3566 m²



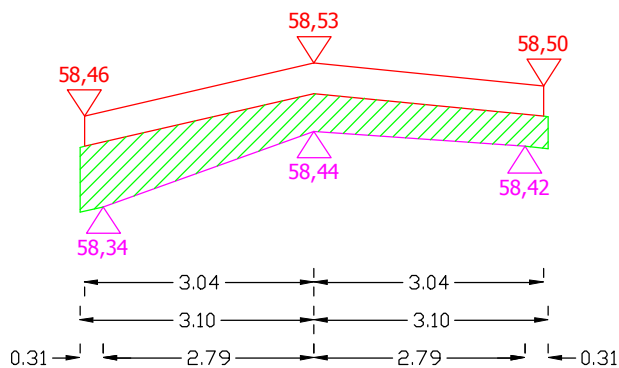
0+690

Pwyr.=0,4240 m²



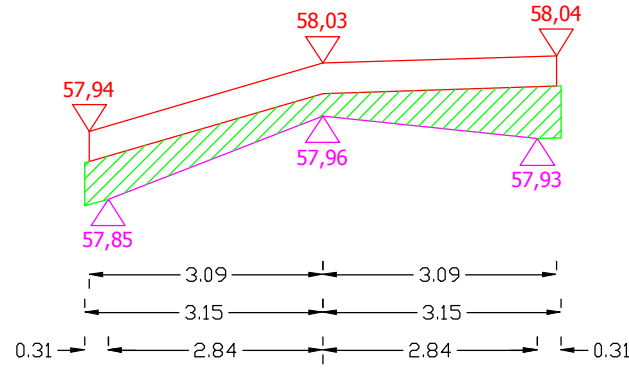
0+700

Pwyr.=0,3581 m²



0+710

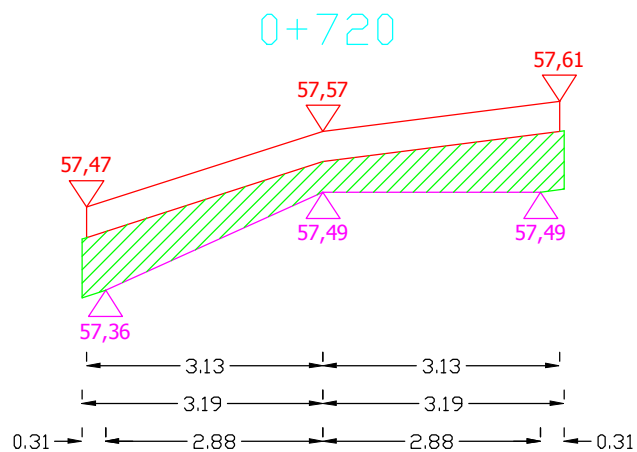
Pwyr.=0,3040 m²



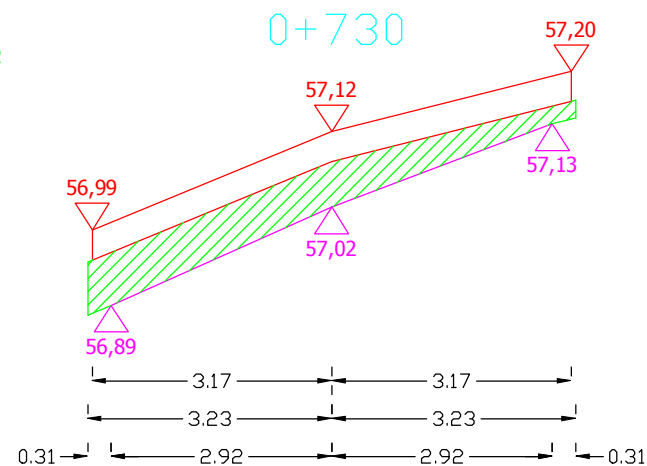
Sporządził:

PRZEKROJE POPRZECZNE DROGI WOJEWÓDZKIEJ NR 651 OD KM 47+870 DO KM 48+860

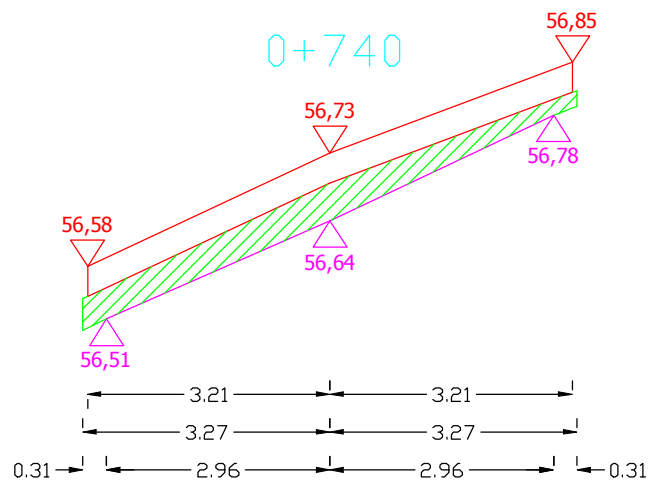
SKALA 1:10/100



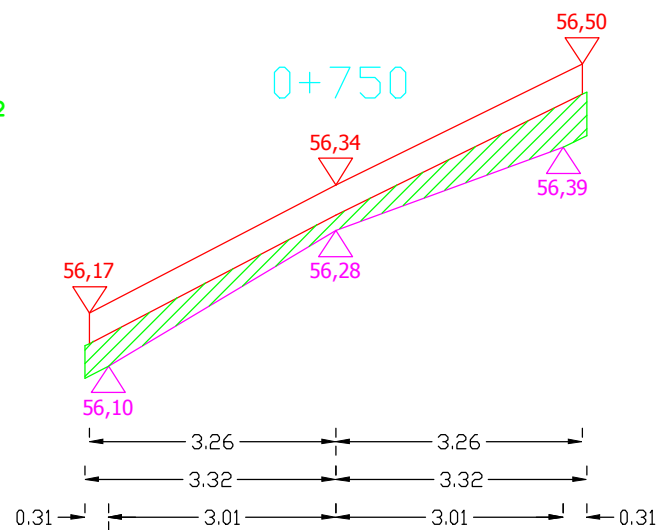
Pwyr.=0,3861 m²



Pwyr.=0,3415 m²



Pwyr.=0,2596 m²

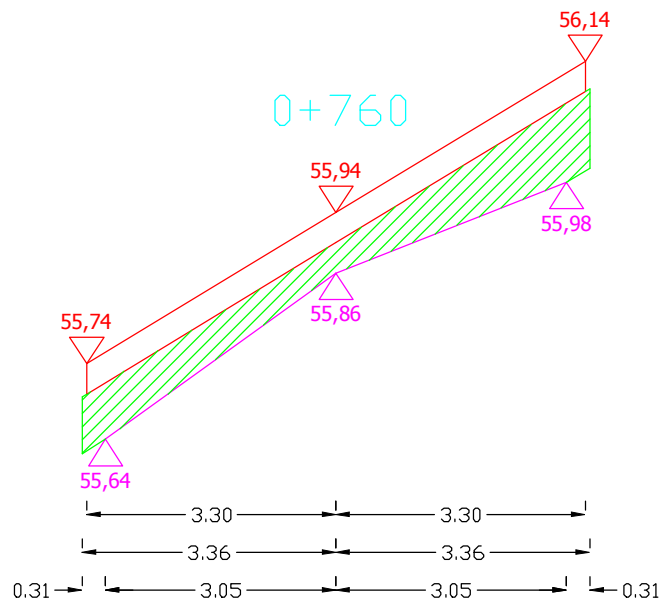


Pwyr.=0,2431 m²

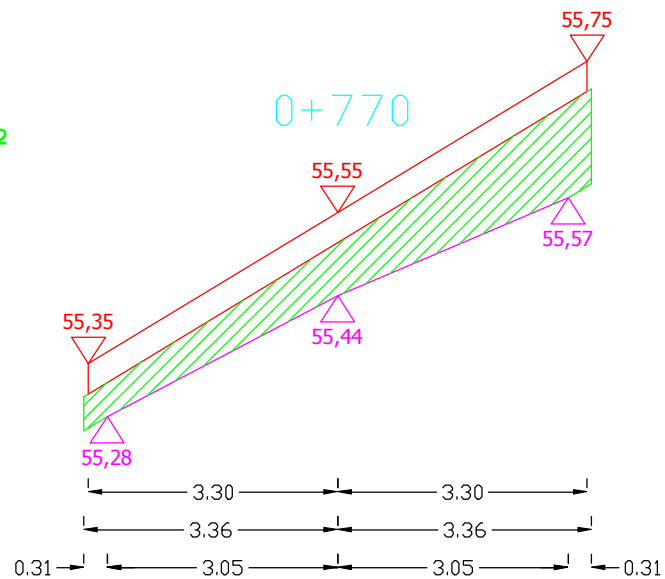
Sporządził:

PRZEKROJE POPRZECZNE DROGI WOJEWÓDZKIEJ NR 651 OD KM 47+870 DO KM 48+860

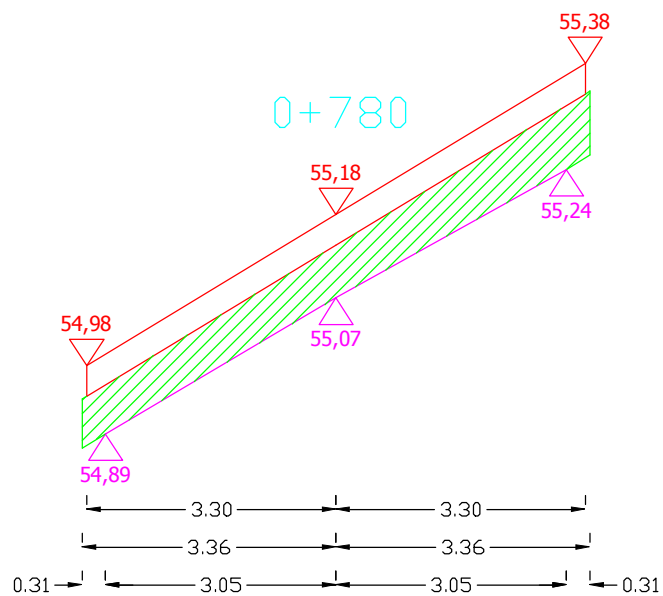
SKALA 1:10/100



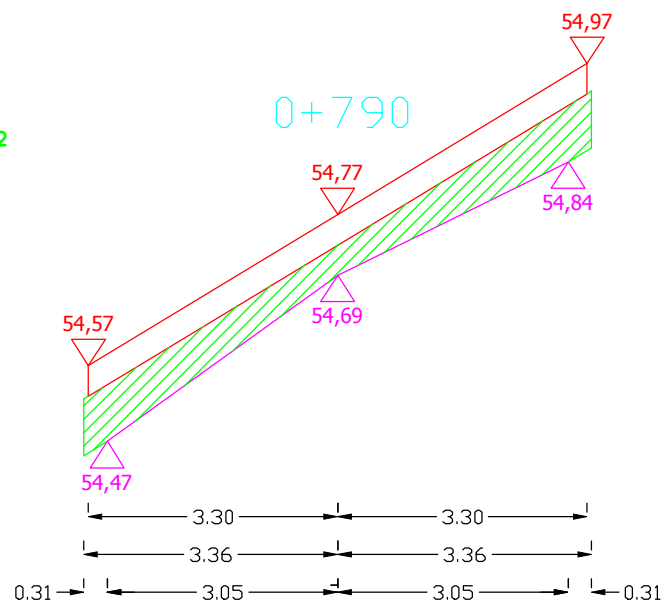
Pwyr.=0,4523 m²



Pwyr.=0,5255 m²



Pwyr.=0,4888 m²

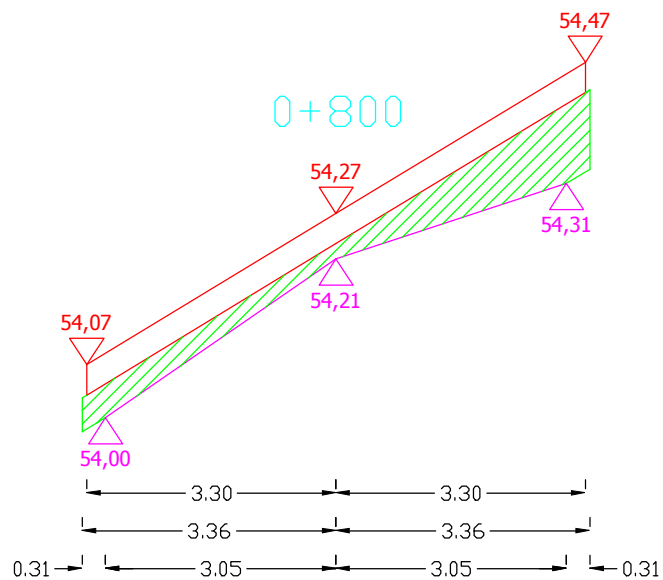


Pwyr.=0,3973 m²

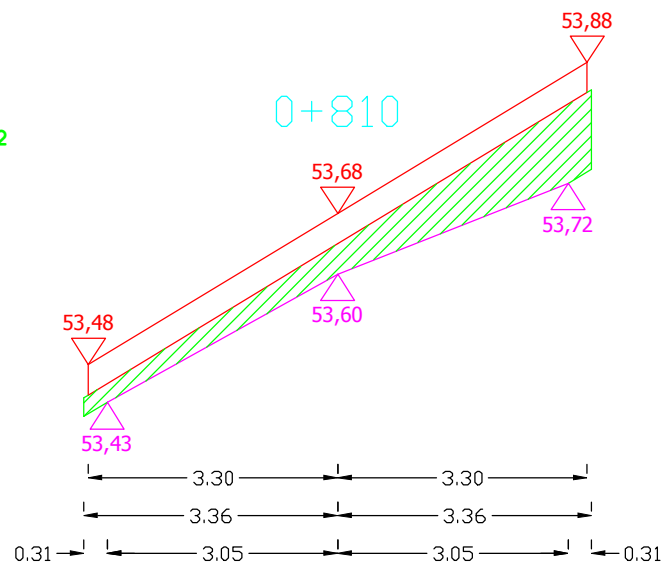
Sporządził:

PRZEKROJE POPRZECZNE DROGI WOJEWÓDZKIEJ NR 651 OD KM 47+870 DO KM 48+860

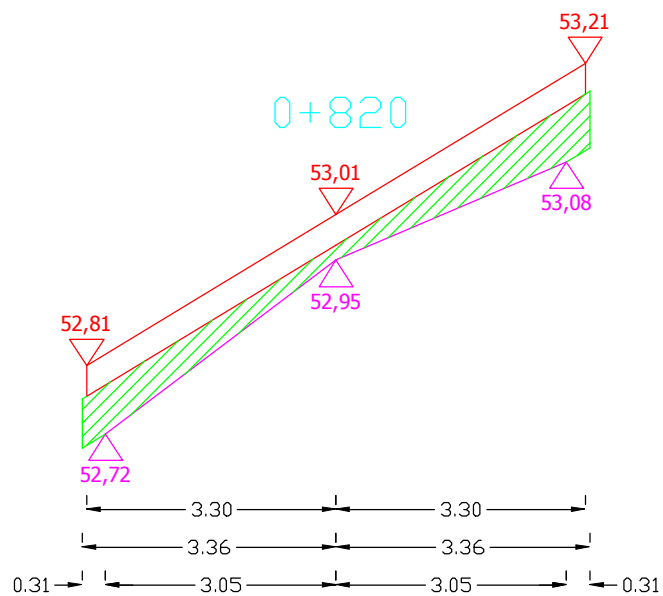
SKALA 1:10/100



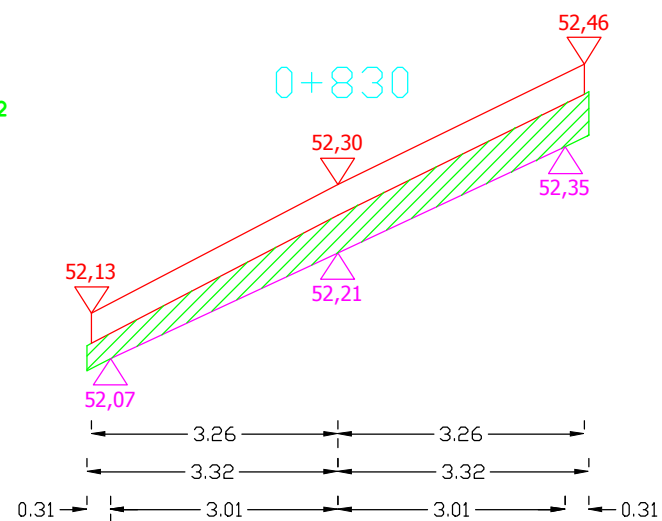
Pwyr.=0,3363 m²



Pwyr.=0,3606 m²



Pwyr.=0,3179 m²

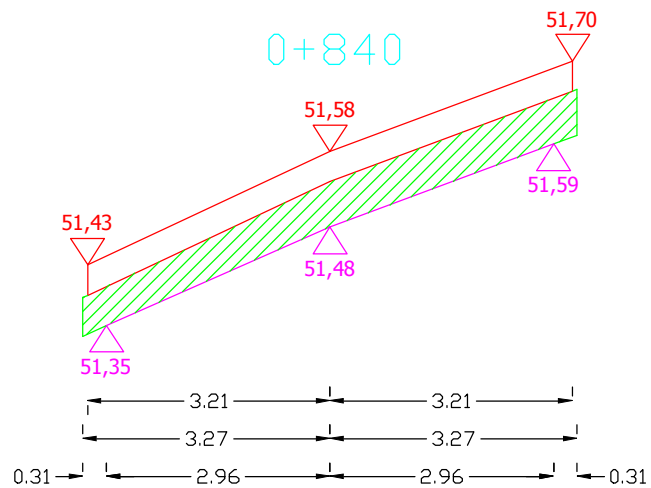


Pwyr.=0,3152 m²

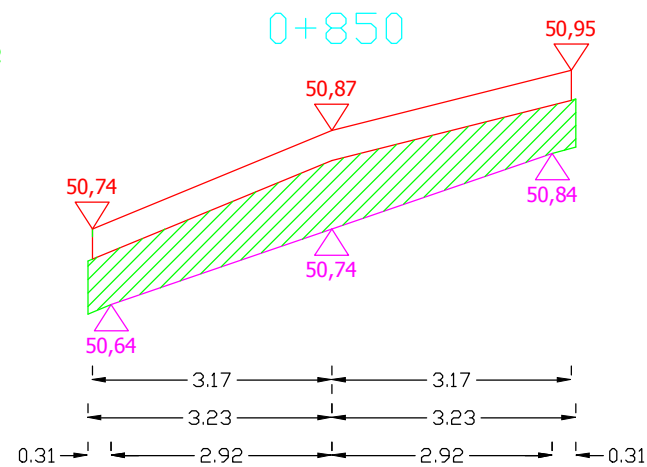
Sporządził:

PRZEKROJE POPRZECZNE DROGI WOJEWÓDZKIEJ NR 651 OD KM 47+870 DO KM 48+860

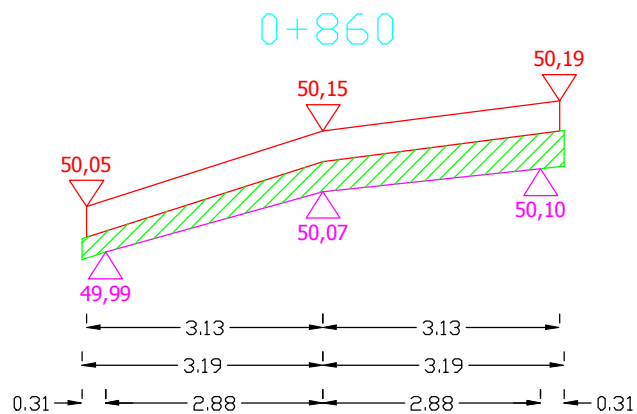
SKALA 1:10/100



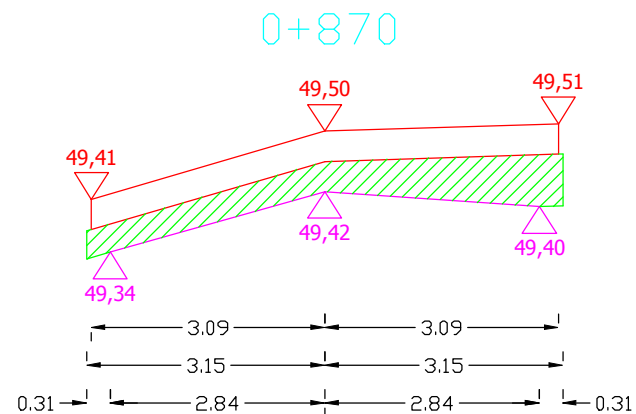
Pwyr.=0,3787 m²



Pwyr.=0,4999 m²



Pwyr.=0,2461 m²



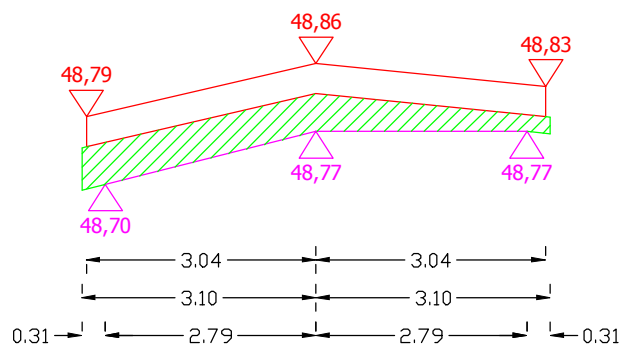
Pwyr.=0,2978 m²

Sporządził:

PRZEKROJE POPRZECZNE DROGI WOJEWÓDZKIEJ NR 651 OD KM 47+870 DO KM 48+860

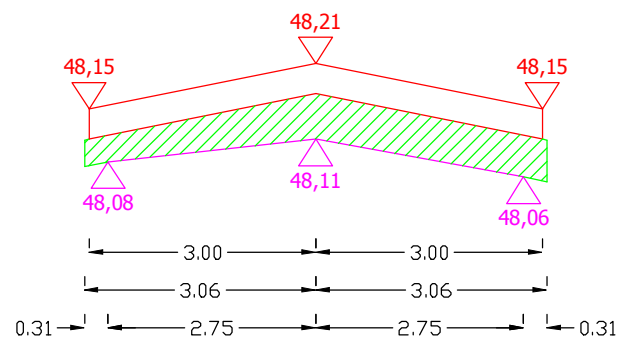
SKALA 1:10/100

0+880



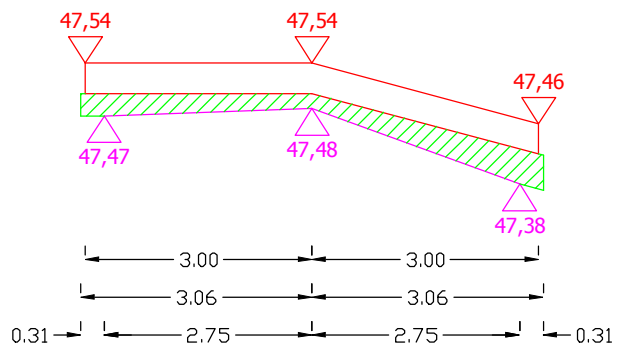
Pwyr.=0,2729 m²

0+890



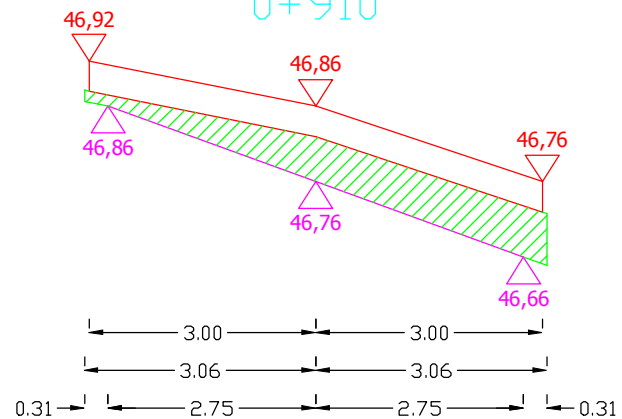
Pwyr.=0,3167 m²

0+900



Pwyr.=0,1842 m²

0+910

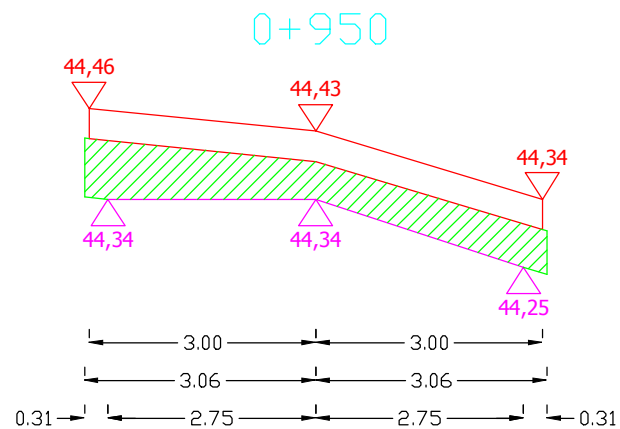
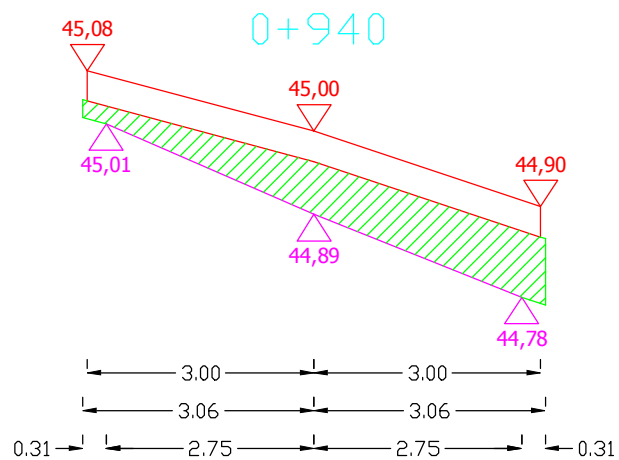
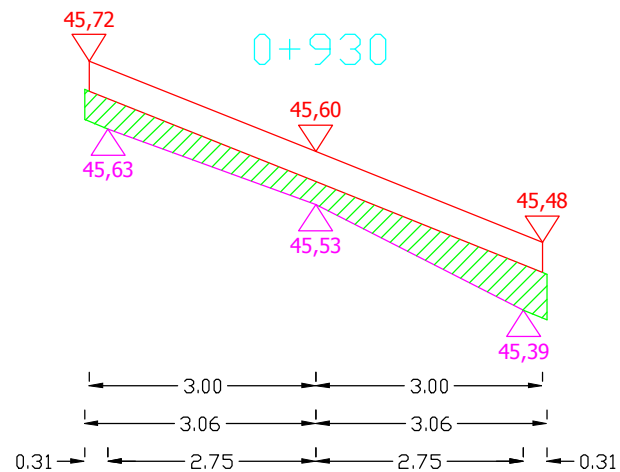
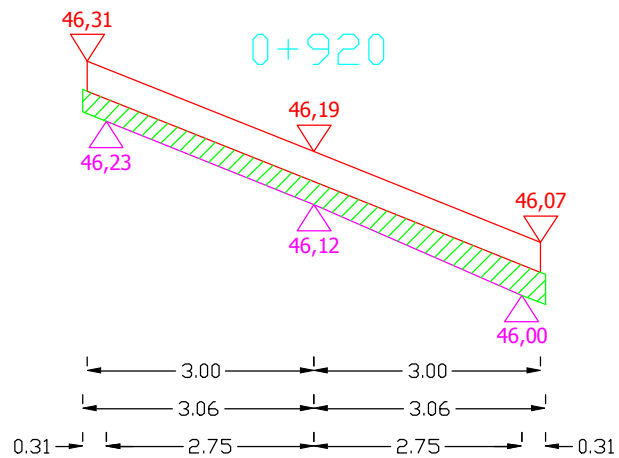


Pwyr.=0,3054 m²

Sporządził:

PRZEKROJE POPRZECZNE DROGI WOJEWÓDZKIEJ NR 651 OD KM 47+870 DO KM 48+860

SKALA 1:10/100

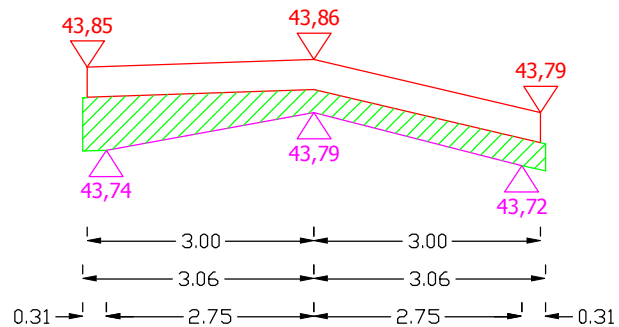


Sporządził:

PRZEKROJE POPRZECZNE DROGI WOJEWÓDZKIEJ NR 651 OD KM 47+870 DO KM 48+860

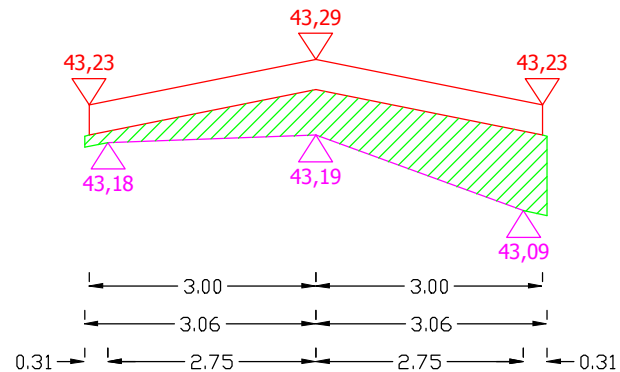
SKALA 1:10/100

0+960



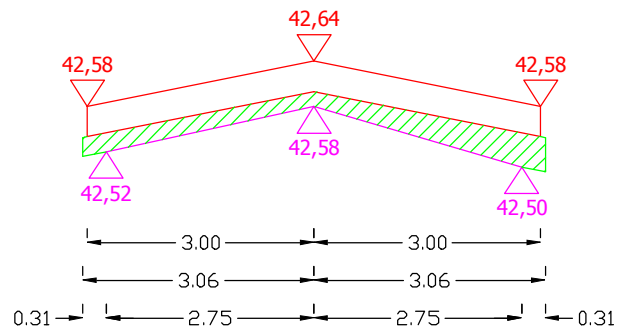
Pwyr.=0,2622 m²

0+970



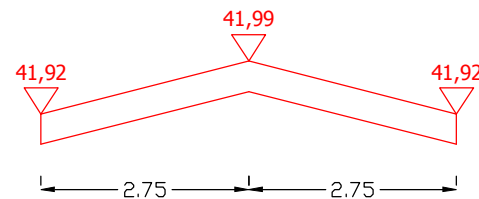
Pwyr.=0,3672 m²

0+980



Pwyr.=0,1730 m²

0+990



Pwyr.=0,0000 m²

Sporządził: