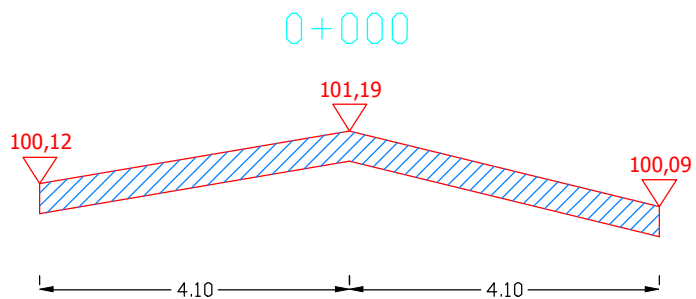


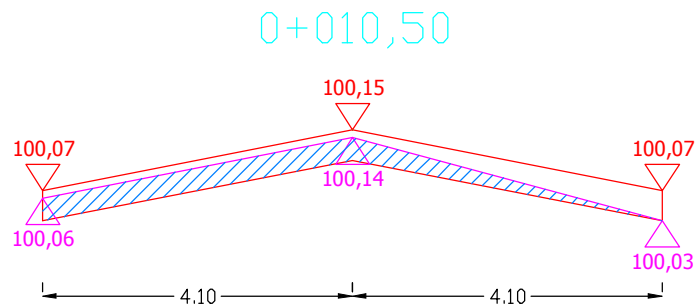
PRZEKROJE POPRZECZNE DROGI WOJEWÓDZKIEJ NR 655 OD KM 72+699,50 DO KM 72+989 (odcinek 1)

SKALA 1:10/100



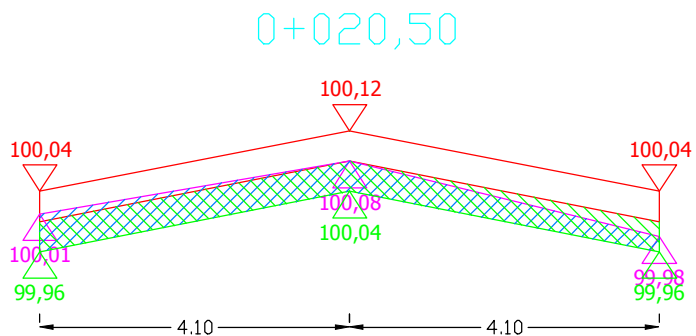
Pwyr.=0,0000 m²

Pfrez.=0,3280 m²



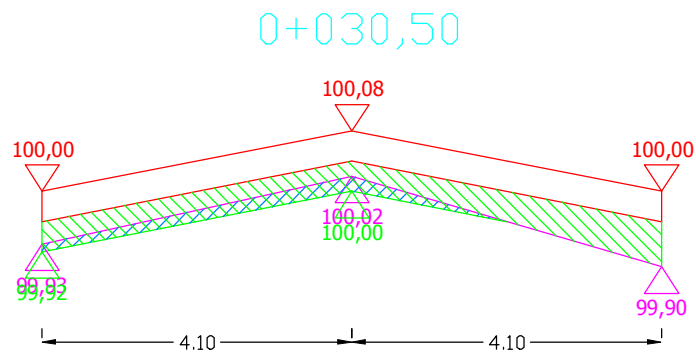
Pwyr.=0,0000 m²

Pfrez.=0,1845 m²



Pwyr.=0,3280 m²

Pfrez.=0,3075 m²



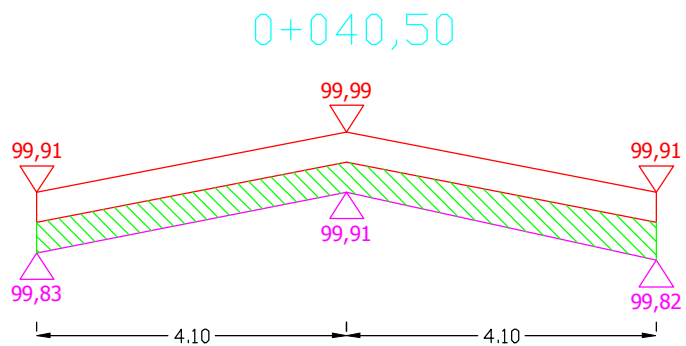
Pwyr.=0,3485 m²

Pfrez.=0,0820 m²

Sporządził:

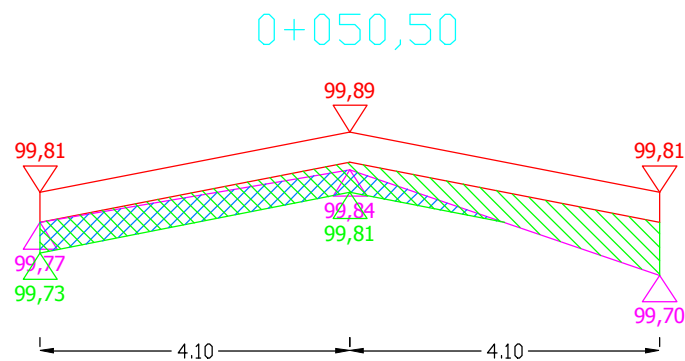
PRZEKROJE POPRZECZNE DROGI WOJEWÓDZKIEJ NR 655 OD KM 72+699,50 DO KM 72+989 (odcinek 1)

SKALA 1:10/100



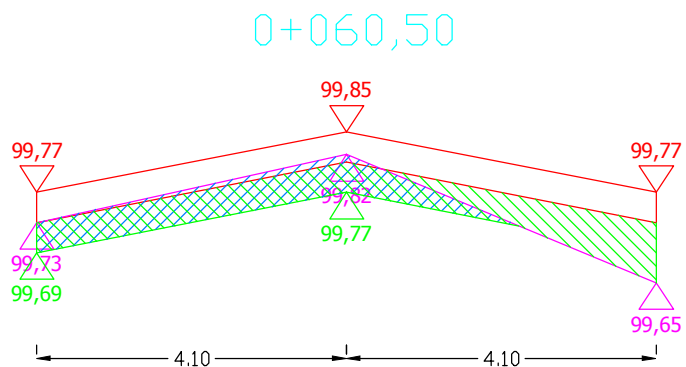
Pwyr.=0,3485 m²

Pfrez.=0,0000 m²



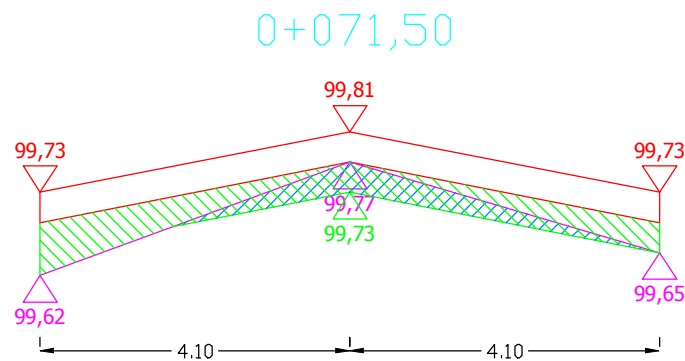
Pwyr.=0,3588 m²

Pfrez.=0,1743 m²



Pwyr.=0,3644 m²

Pfrez.=0,2414 m²



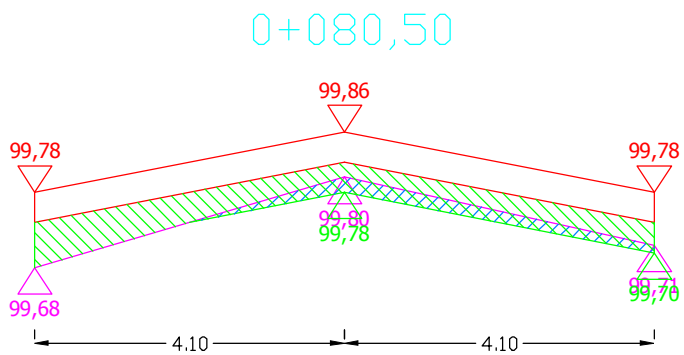
Pwyr.=0,3544 m²

Pfrez.=0,1289 m²

Sporządził:

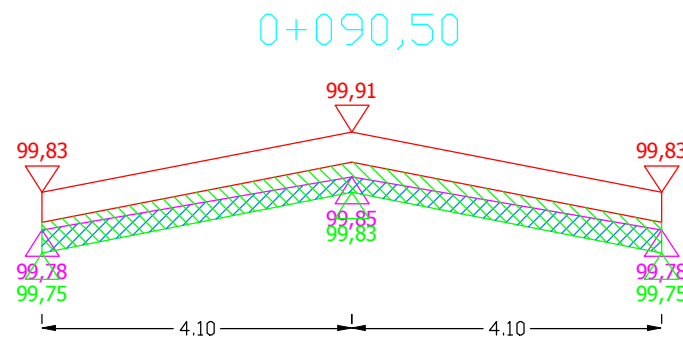
PRZEKROJE POPRZECZNE DROGI WOJEWÓDZKIEJ NR 655 OD KM 72+699,50 DO KM 72+989 (odcinek 1)

SKALA 1:10/100



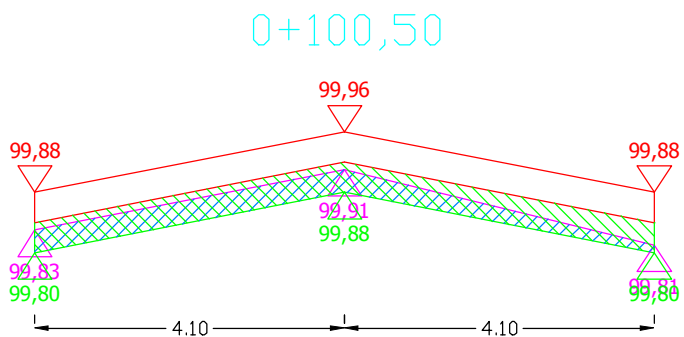
Pwyr.=0,3485 m²

Pfrez.=0,0820 m²



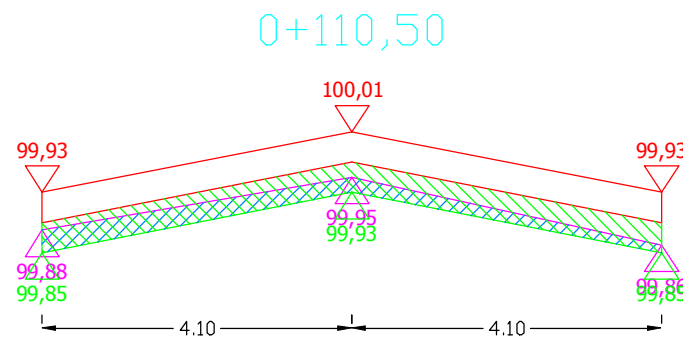
Pwyr.=0,3280 m²

Pfrez.=0,2050 m²



Pwyr.=0,3280 m²

Pfrez.=0,2050 m²



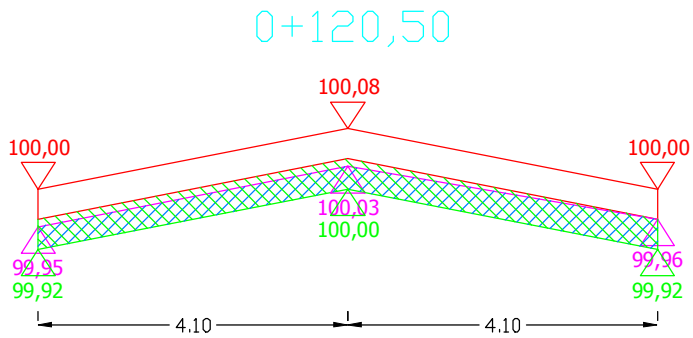
Pwyr.=0,3280 m²

Pfrez.=0,1640 m²

Sporządził:

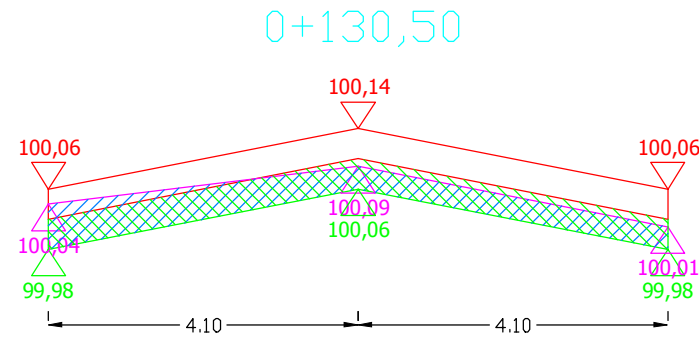
PRZEKROJE POPRZECZNE DROGI WOJEWÓDZKIEJ NR 655 OD KM 72+699,50 DO KM 72+989 (odcinek 1)

SKALA 1:10/100



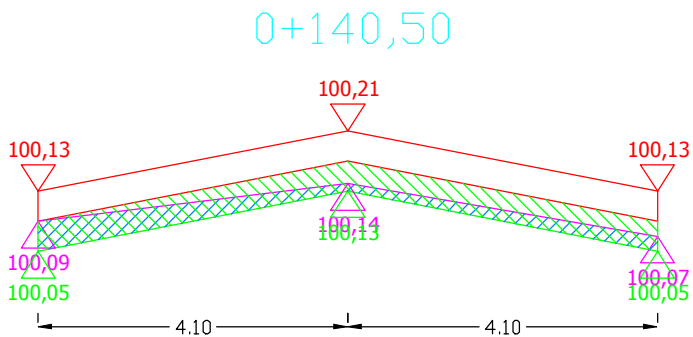
Pwyr.=0,3280 m²

Pfrez.=0,2665 m²



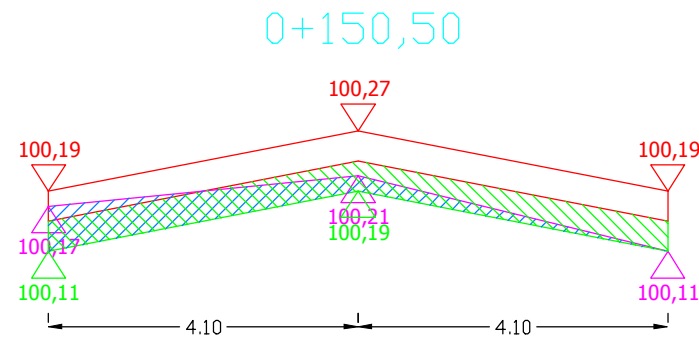
Pwyr.=0,3280 m²

Pfrez.=0,3075 m²



Pwyr.=0,3280 m²

Pfrez.=0,1640 m²



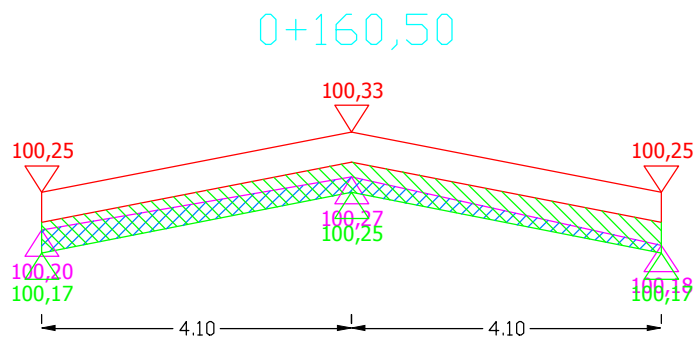
Pwyr.=0,3280 m²

Pfrez.=0,2050 m²

Sporządził:

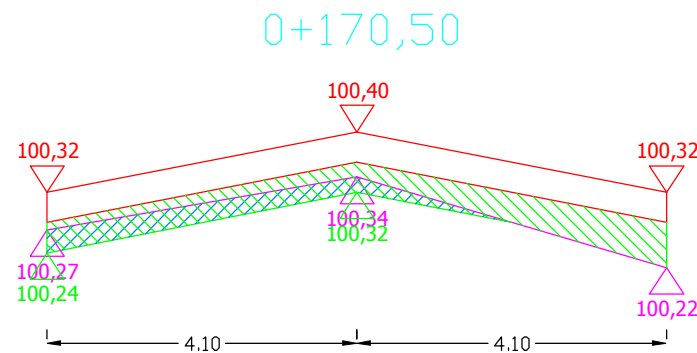
PRZEKROJE POPRZECZNE DROGI WOJEWÓDZKIEJ NR 655 OD KM 72+699,50 DO KM 72+989 (odcinek 1)

SKALA 1:10/100



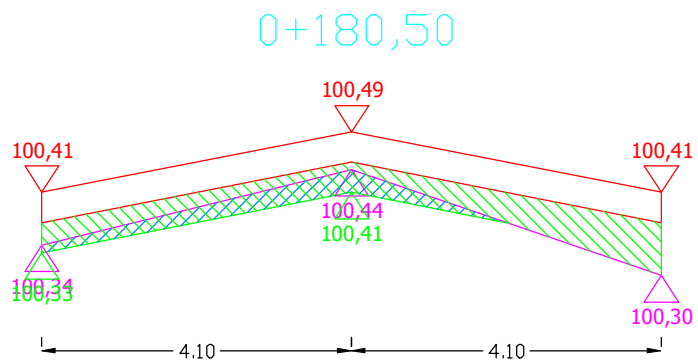
Pwyr.=0,3280 m²

Pfrez.=0,1640 m²



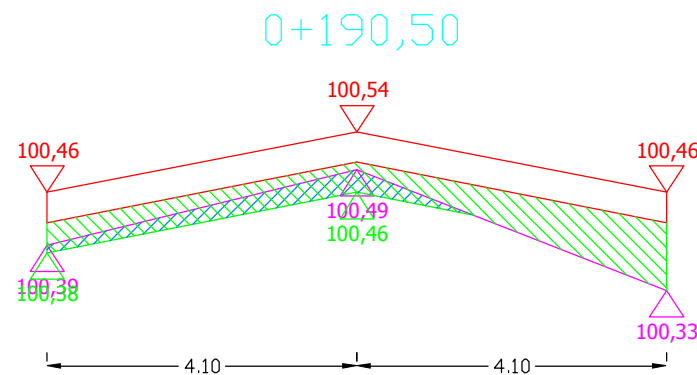
Pwyr.=0,3485 m²

Pfrez.=0,1230 m²



Pwyr.=0,3588 m²

Pfrez.=0,1128 m²



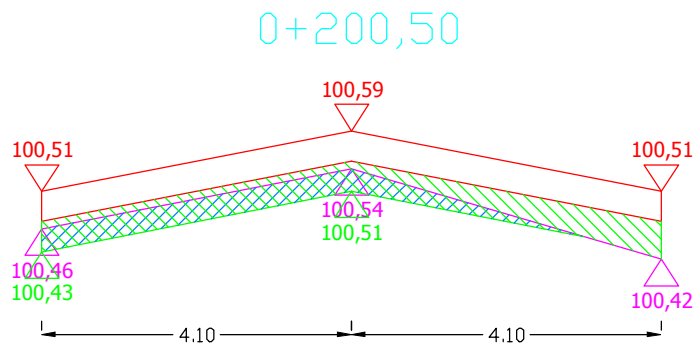
Pwyr.=0,3921 m²

Pfrez.=0,1051 m²

Sporządził:

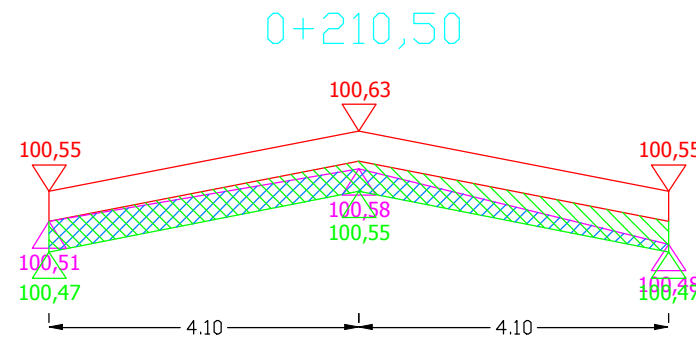
PRZEKROJE POPRZECZNE DROGI WOJEWÓDZKIEJ NR 655 OD KM 72+699,50 DO KM 72+989 (odcinek 1)

SKALA 1:10/100



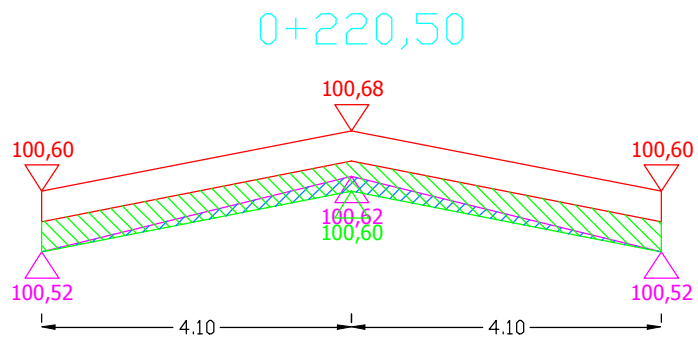
Pwyr.=0,3331 m²

Pfrez.=0,1691 m²



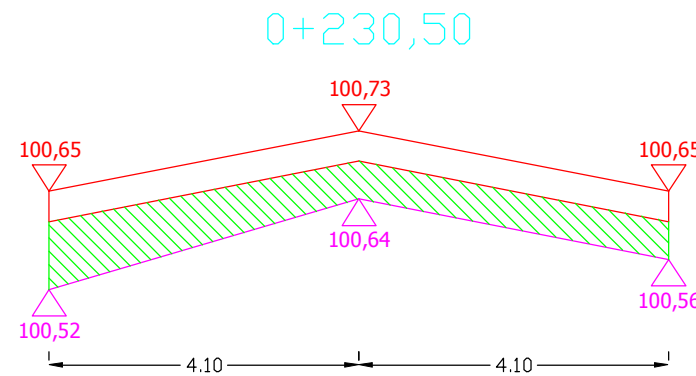
Pwyr.=0,3280 m²

Pfrez.=0,2255 m²



Pwyr.=0,3280 m²

Pfrez.=0,0820 m²



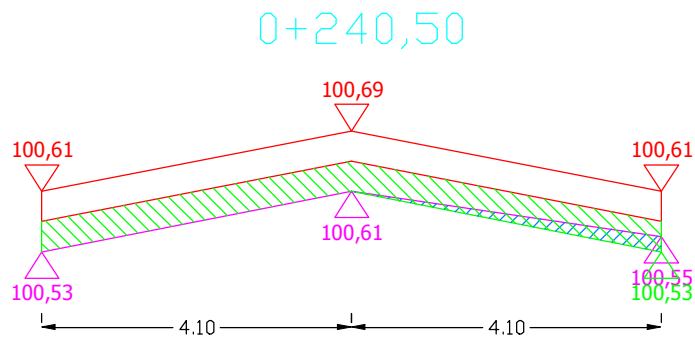
Pwyr.=0,4920 m²

Pfrez.=0,0000 m²

Sporządził:

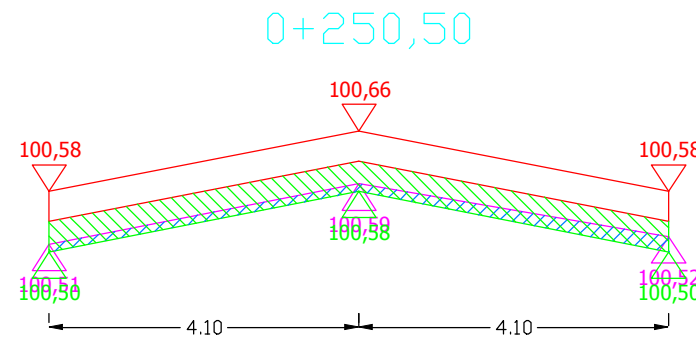
PRZEKROJE POPRZECZNE DROGI WOJEWÓDZKIEJ NR 655 OD KM 72+699,50 DO KM 72+989 (odcinek 1)

SKALA 1:10/100



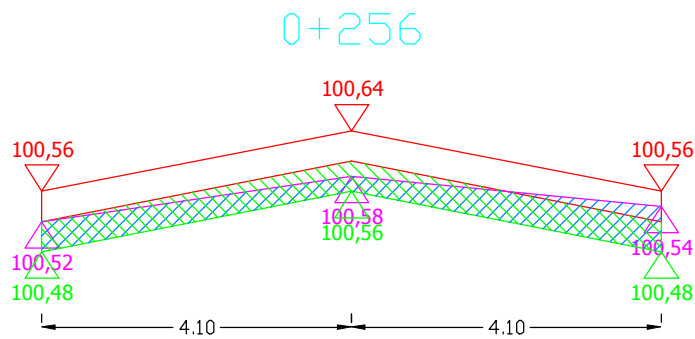
Pwyr.=0,3280 m²

Pfrez.=0,0410 m²



Pwyr.=0,3280 m²

Pfrez.=0,1025 m²



Pwyr.=0,3280 m²

Pfrez.=0,2870 m²



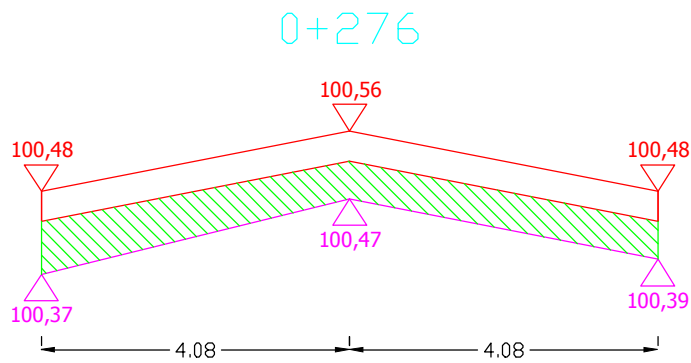
Pwyr.=0,3272 m²

Pfrez.=0,2454 m²

Sporządził:

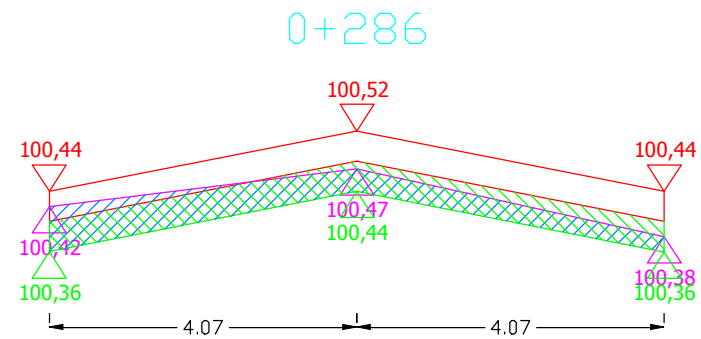
PRZEKROJE POPRZECZNE DROGI WOJEWÓDZKIEJ NR 655 OD KM 72+699,50 DO KM 72+989 (odcinek 1)

SKALA 1:10/100



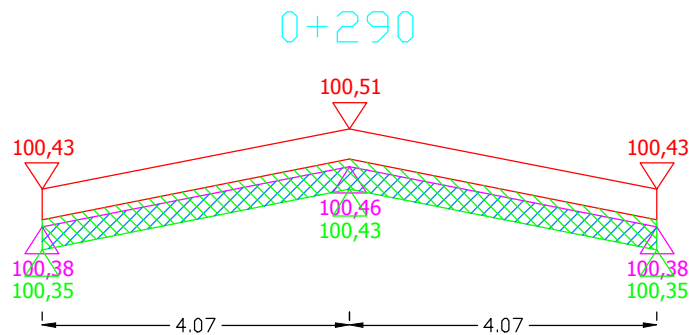
Pwyr.=0,4488 m²

Pfrez.=0,0000 m²



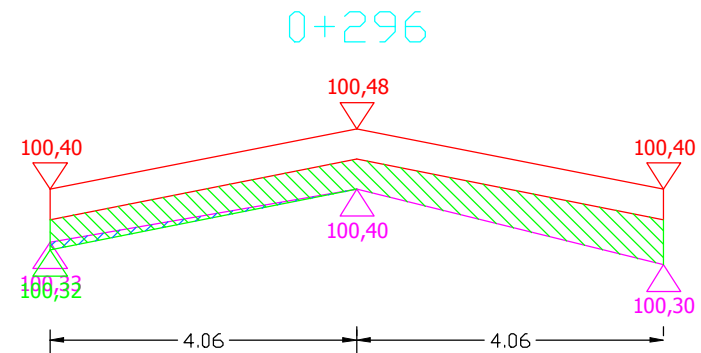
Pwyr.=0,3253 m²

Pfrez.=0,2846 m²



Pwyr.=0,3253 m²

Pfrez.=0,2439 m²



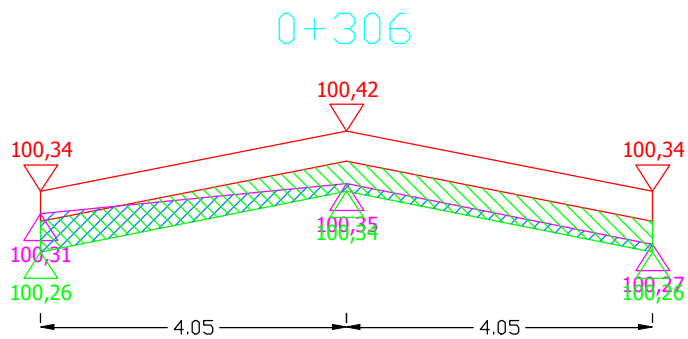
Pwyr.=0,3654 m²

Pfrez.=0,0203 m²

Sporządził:

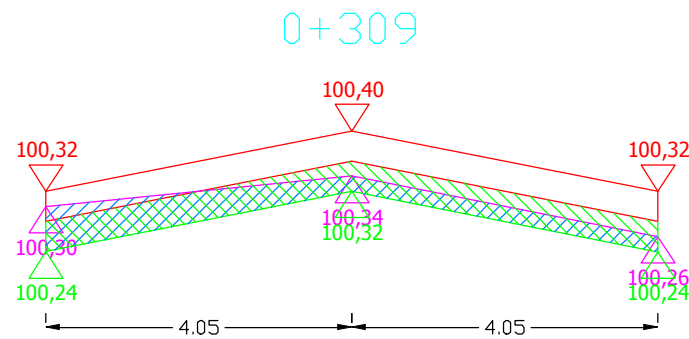
PRZEKROJE POPRZECZNE DROGI WOJEWÓDZKIEJ NR 655 OD KM 72+699,50 DO KM 72+989 (odcinek 1)

SKALA 1:10/100



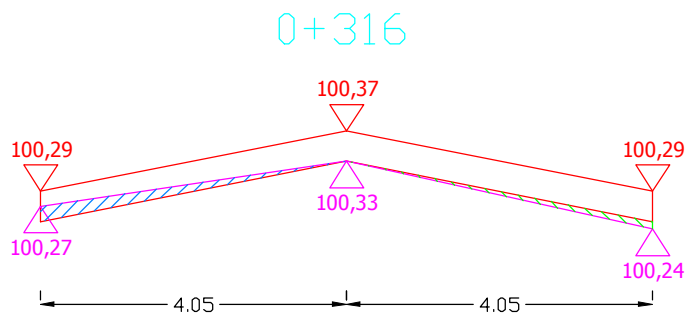
Pwyr.=0,3240 m²

Pfrez.=0,1620 m²



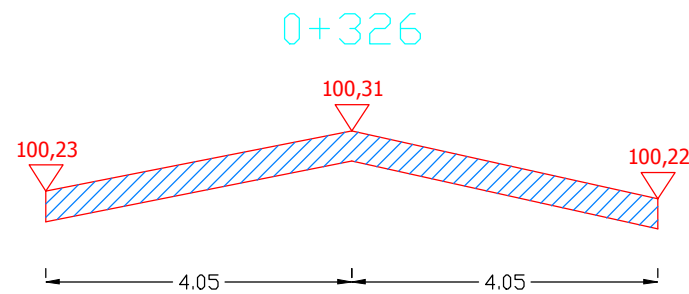
Pwyr.=0,3240 m²

Pfrez.=0,2430 m²



Pwyr.=0,0203 m²

Pfrez.=0,0405 m²



Pwyr.=0,0000 m²

Pfrez.=0,3240 m²

Sporządził: