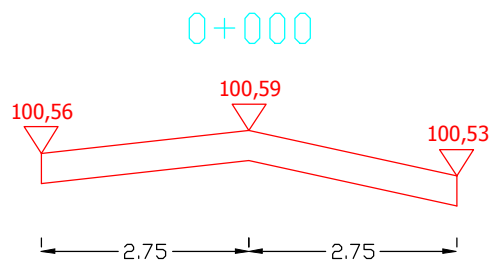
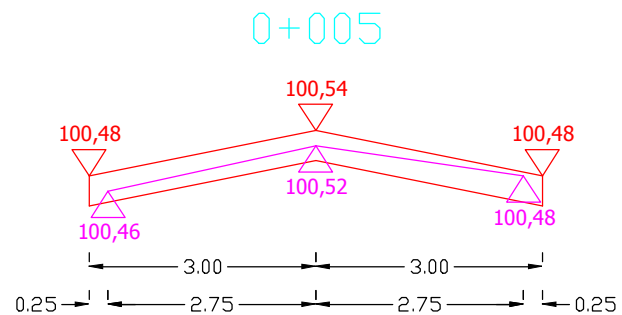


PRZEKROJE POPRZECZNE DROGI WOJEWÓDZKIEJ NR 655 OD KM 114+295 DO KM 114+940

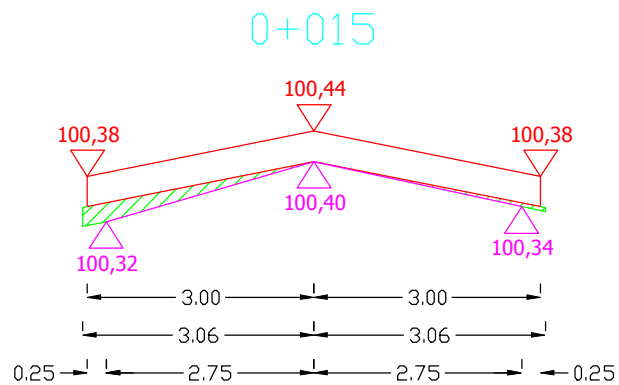
SKALA 1:10/100



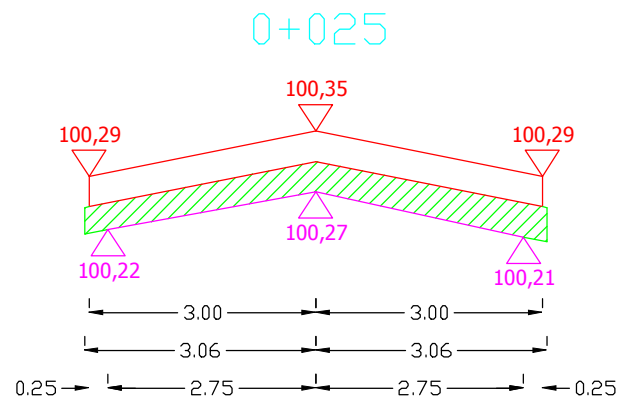
Pwyr.=0,0000 m²



Pwyr.=0,0000 m²



Pwyr.=0,0421 m²

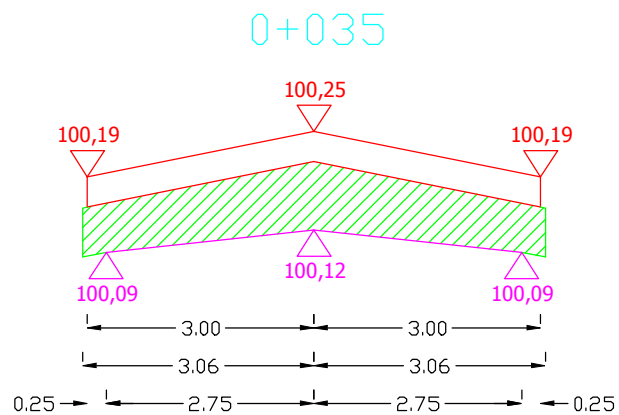


Pwyr.=0,2448 m²

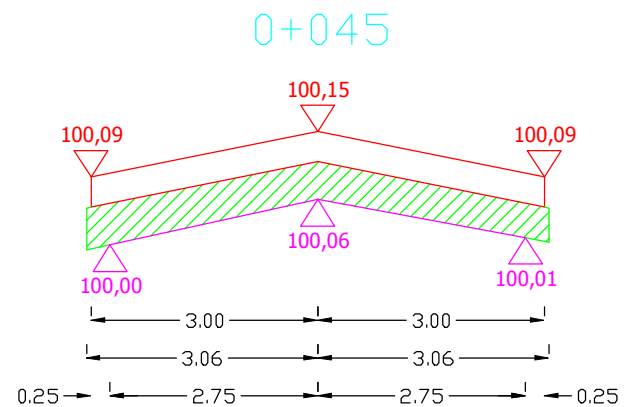
Sporządził:

PRZEKROJE POPRZECZNE DROGI WOJEWÓDZKIEJ NR 655 OD KM 114+295 DO KM 114+940

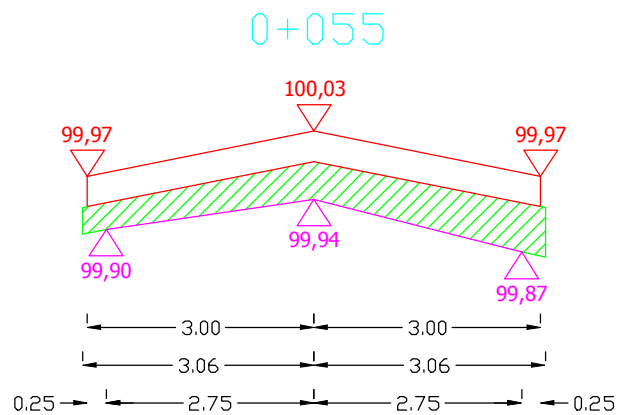
SKALA 1:10/100



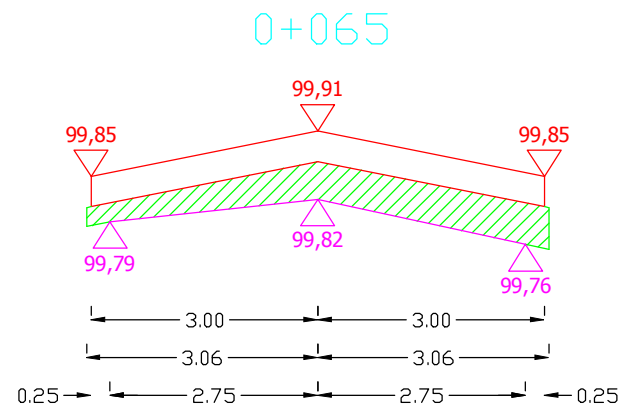
Pwyr.=0,4666 m²



Pwyr.=0,3060 m²



Pwyr.=0,3060 m²



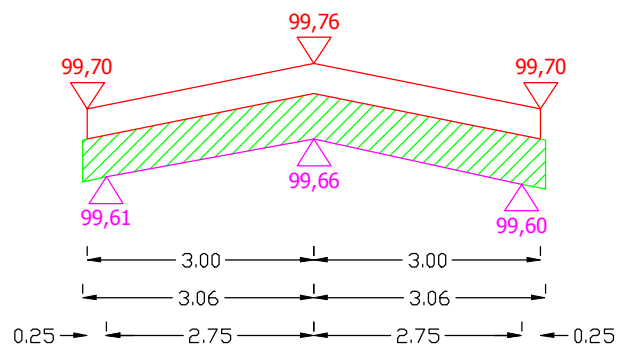
Pwyr.=0,2723 m²

Sporządził:

PRZEKROJE POPRZECZNE DROGI WOJEWÓDZKIEJ NR 655 OD KM 114+295 DO KM 114+940

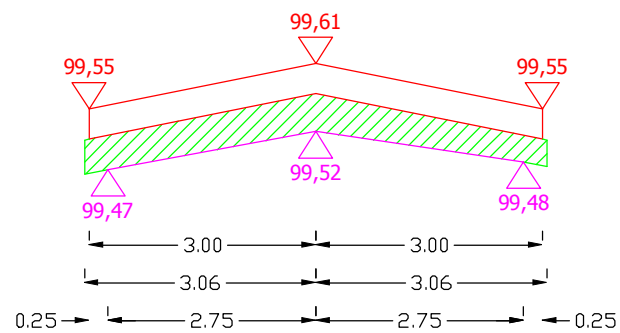
SKALA 1:10/100

0+075



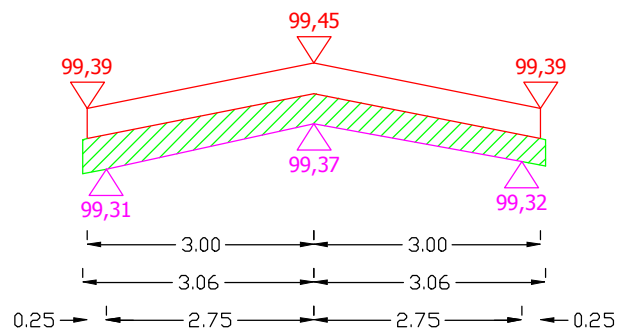
Pwyr.=0,3672 m²

0+085



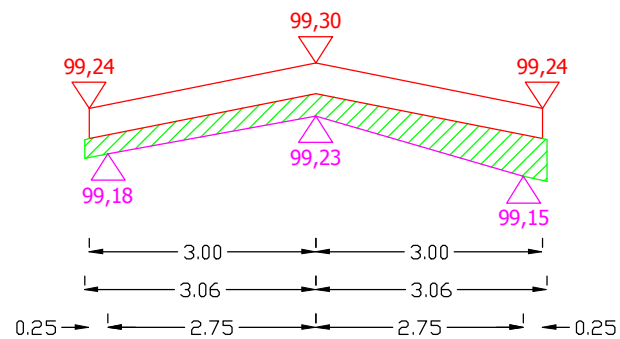
Pwyr.=0,2723 m²

0+095



Pwyr.=0,2448 m²

0+105



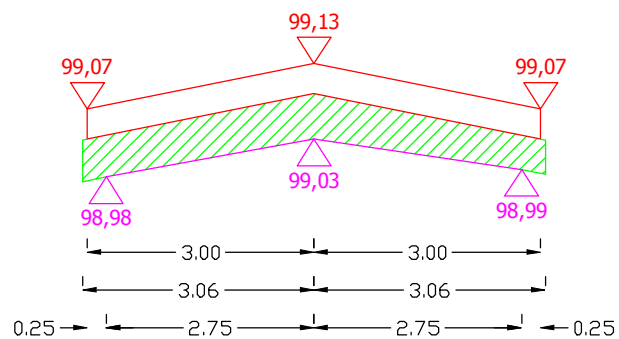
Pwyr.=0,2173 m²

Sporządził:

PRZEKROJE POPRZECZNE DROGI WOJEWÓDZKIEJ NR 655 OD KM 114+295 DO KM 114+940

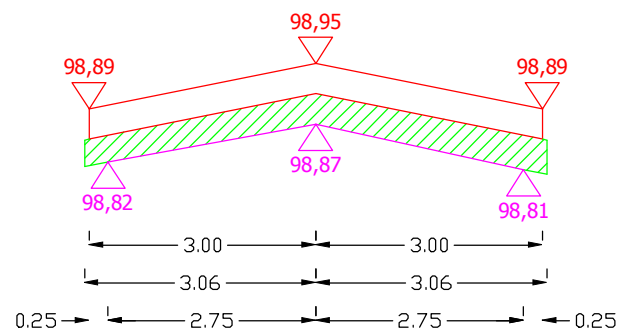
SKALA 1:10/100

0+115



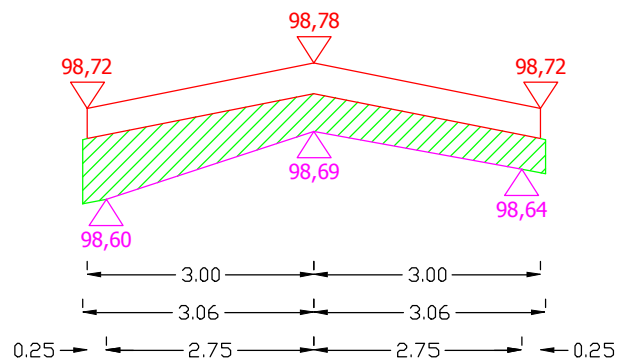
Pwyr.=0,3335 m²

0+125



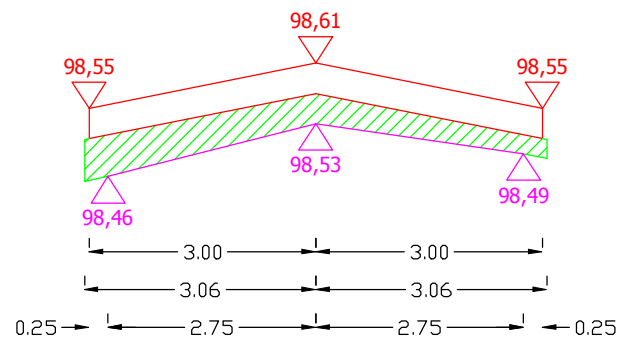
Pwyr.=0,2448 m²

0+135



Pwyr.=0,3566 m²

0+145



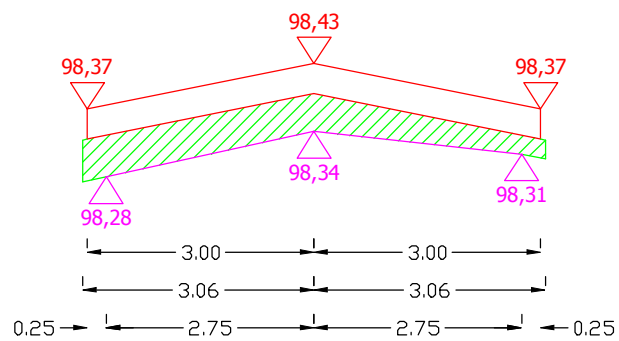
Pwyr.=0,2448 m²

Sporządził:

PRZEKROJE POPRZECZNE DROGI WOJEWÓDZKIEJ NR 655 OD KM 114+295 DO KM 114+940

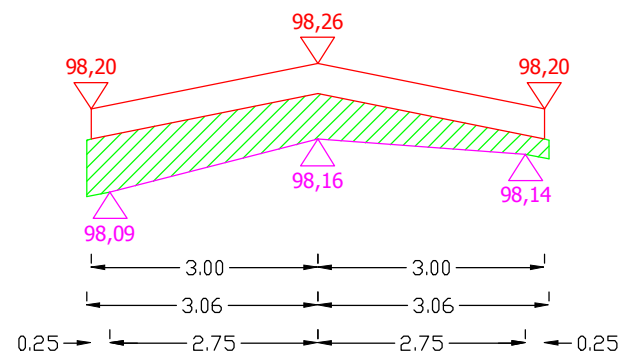
SKALA 1:10/100

0+155



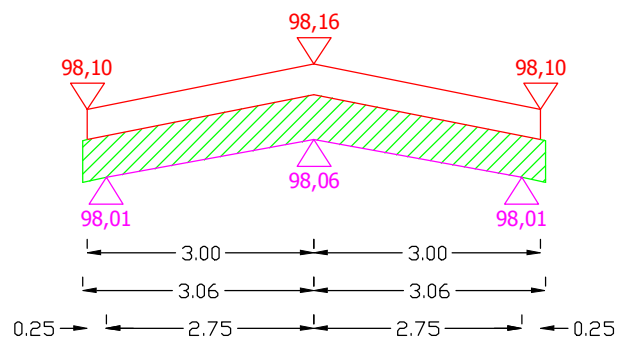
Pwyr.=0,2723 m²

0+165



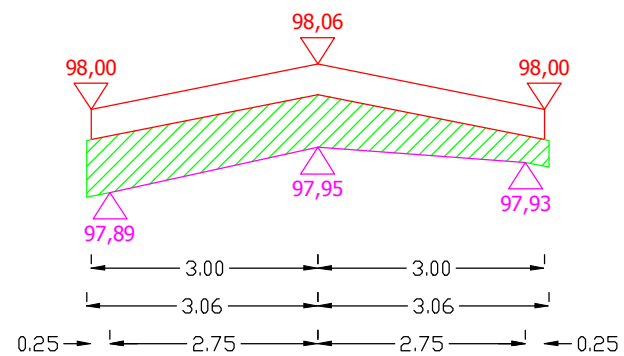
Pwyr.=0,3335 m²

0+175



Pwyr.=0,3504 m²

0+185



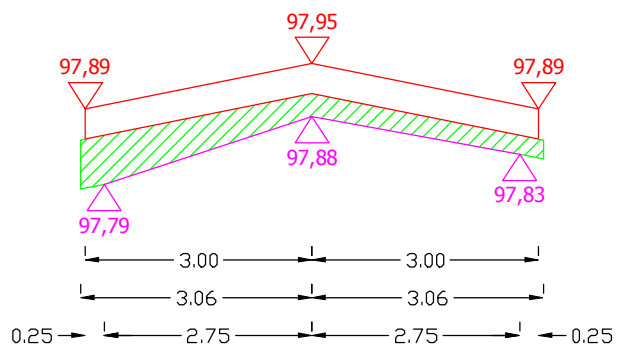
Pwyr.=0,3779 m²

Sporządził:

PRZEKROJE POPRZECZNE DROGI WOJEWÓDZKIEJ NR 655 OD KM 114+295 DO KM 114+940

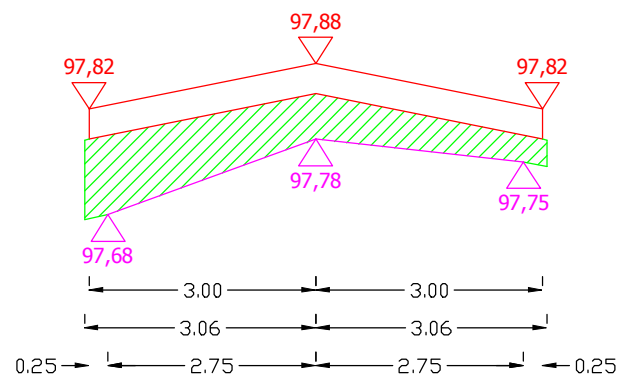
SKALA 1:10/100

0+195



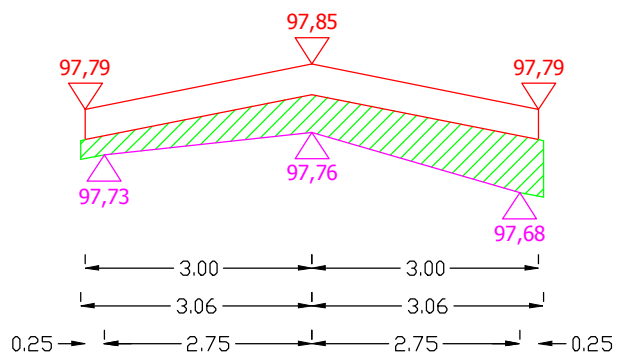
Pwyr.=0,2342 m²

0+205



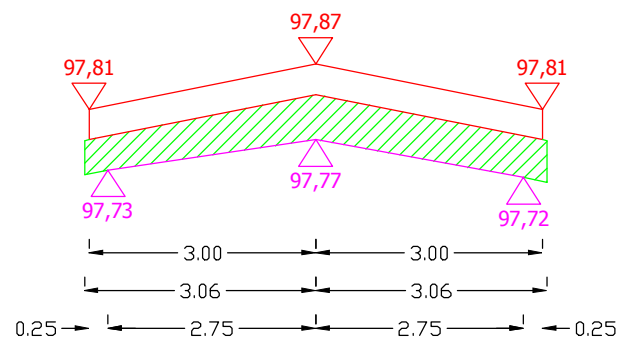
Pwyr.=0,4009 m²

0+215



Pwyr.=0,3060 m²

0+225



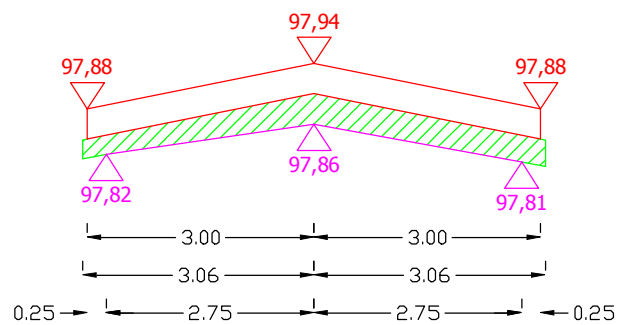
Pwyr.=0,3335 m²

Sporządził:

PRZEKROJE POPRZECZNE DROGI WOJEWÓDZKIEJ NR 655 OD KM 114+295 DO KM 114+940

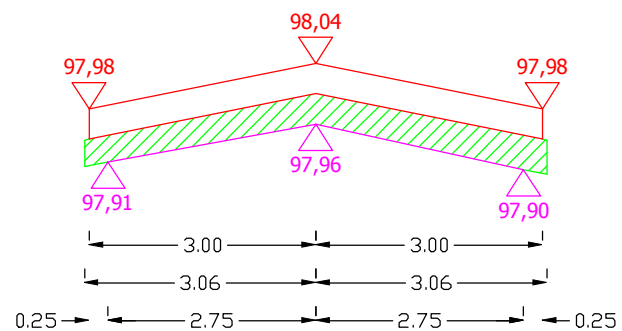
SKALA 1:10/100

0+235



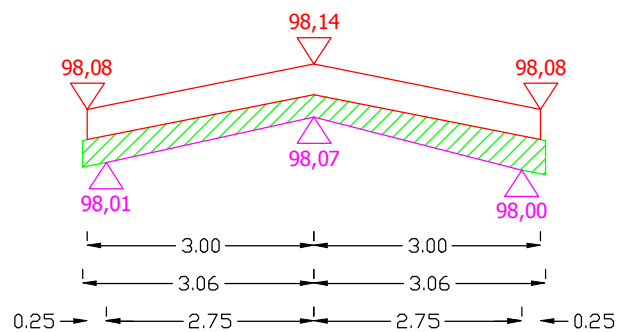
Pwyr.=0,2111 m²

0+245



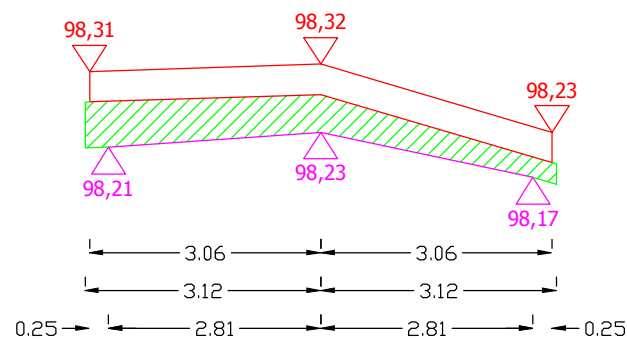
Pwyr.=0,2448 m²

0+255



Pwyr.=0,2173 m²

0+265

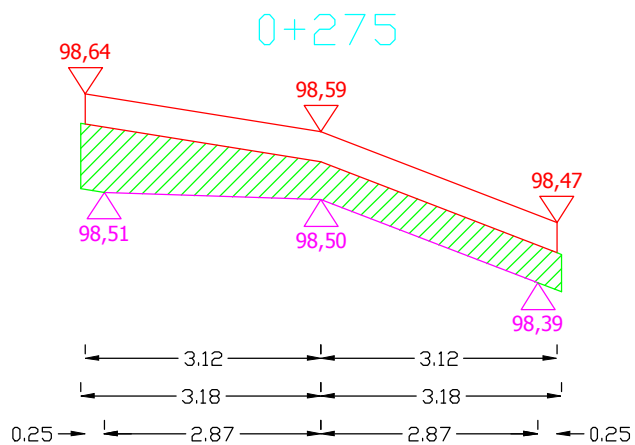


Pwyr.=0,2917 m²

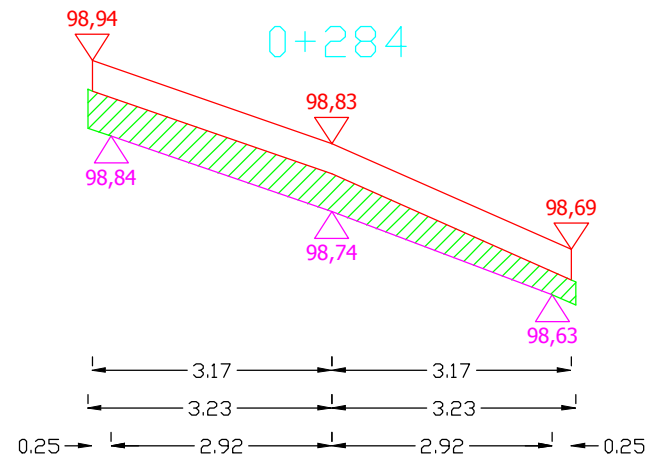
Sporządził:

PRZEKROJE POPRZECZNE DROGI WOJEWÓDZKIEJ NR 655 OD KM 114+295 DO KM 114+940

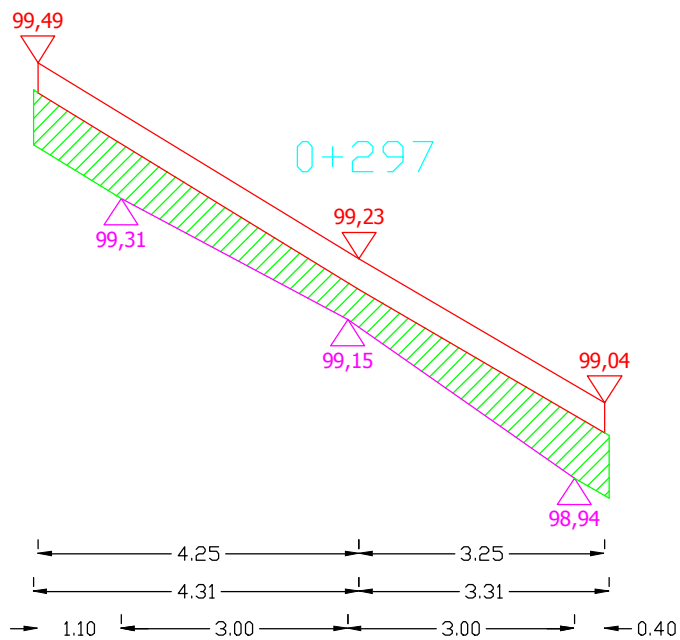
SKALA 1:10/100



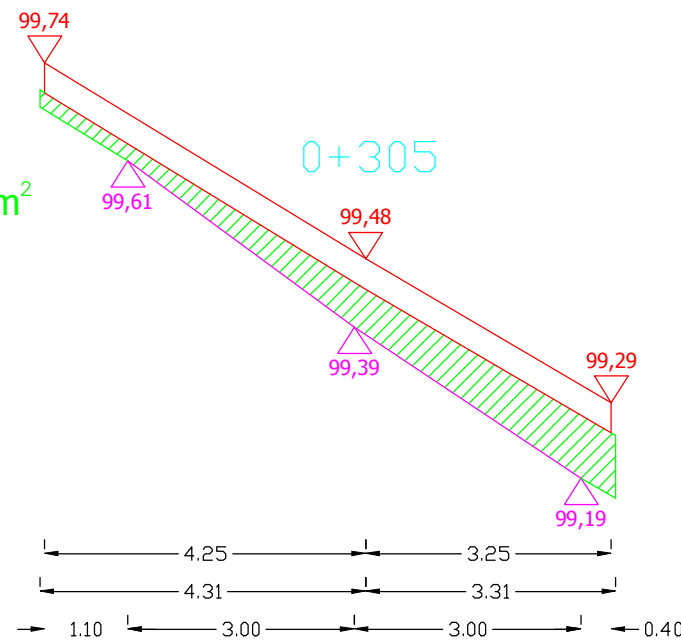
Pwyr.=0,3801 m²



Pwyr.=0,2918 m²



Pwyr.=0,5040 m²

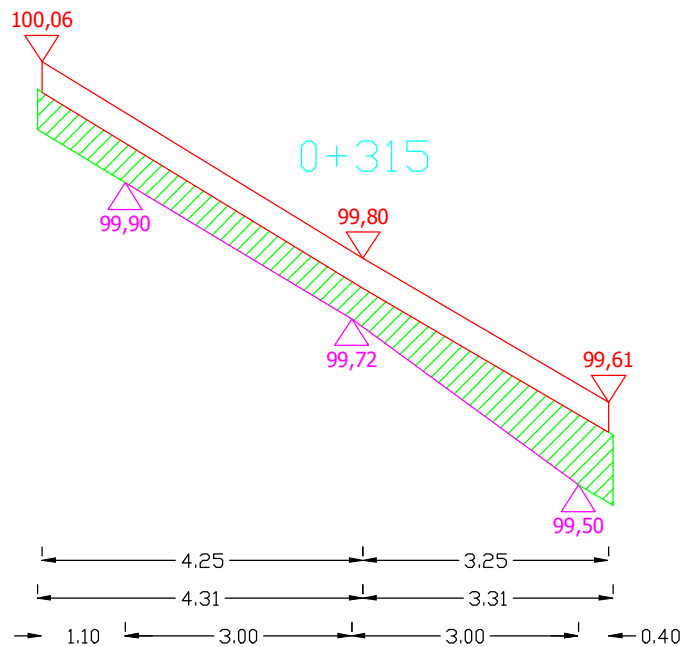


Pwyr.=0,4008 m²

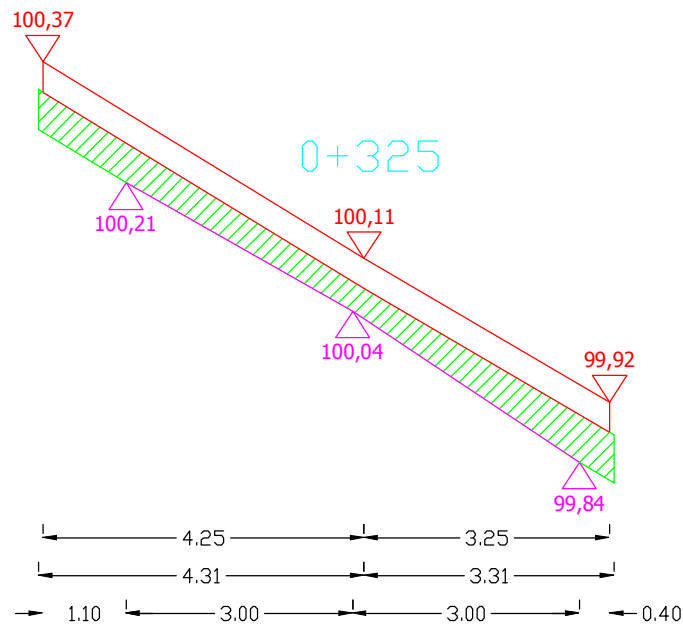
Sporządził:

PRZEKROJE POPRZECZNE DROGI WOJEWÓDZKIEJ NR 655 OD KM 114+295 DO KM 114+940

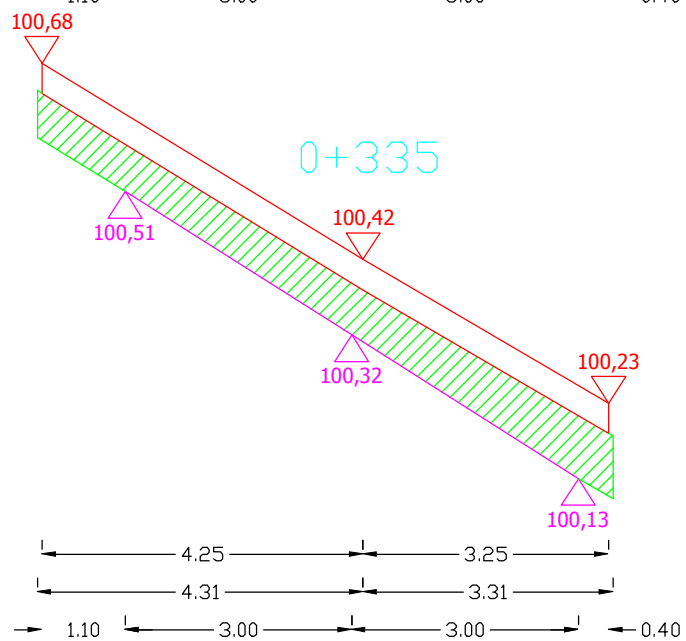
SKALA 1:10/100



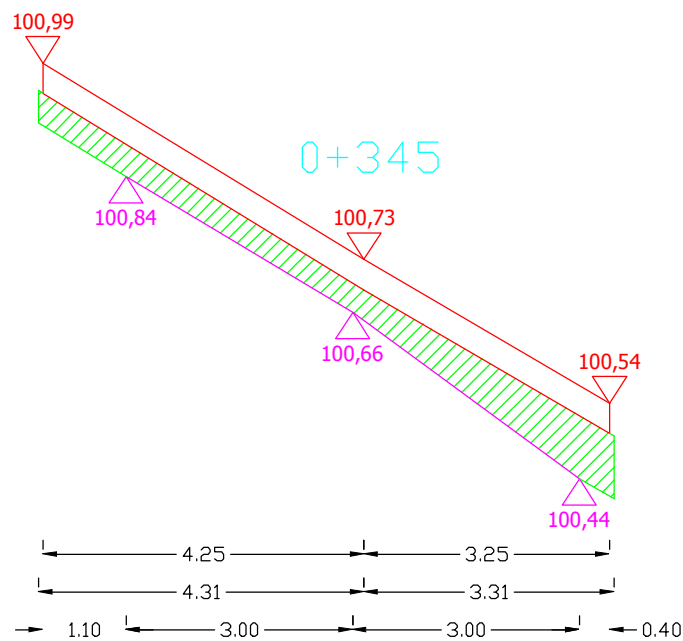
Pwyr.=0,4702 m²



Pwyr.=0,3814 m²



Pwyr.=0,5372 m²

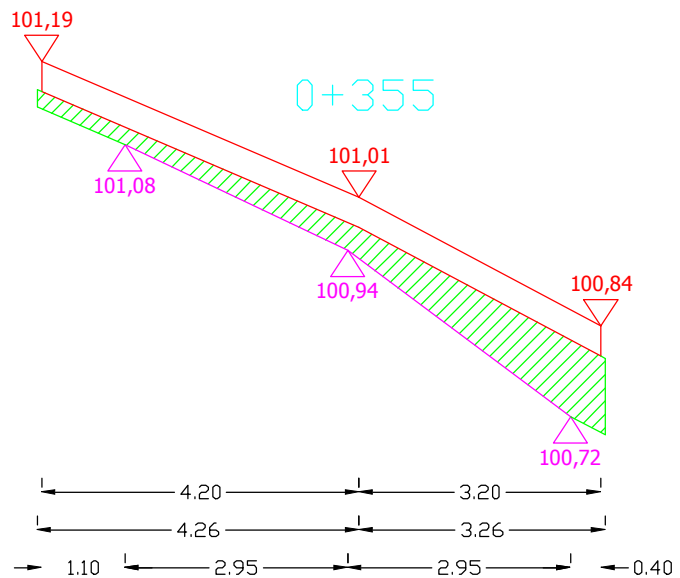


Pwyr.=0,3940 m²

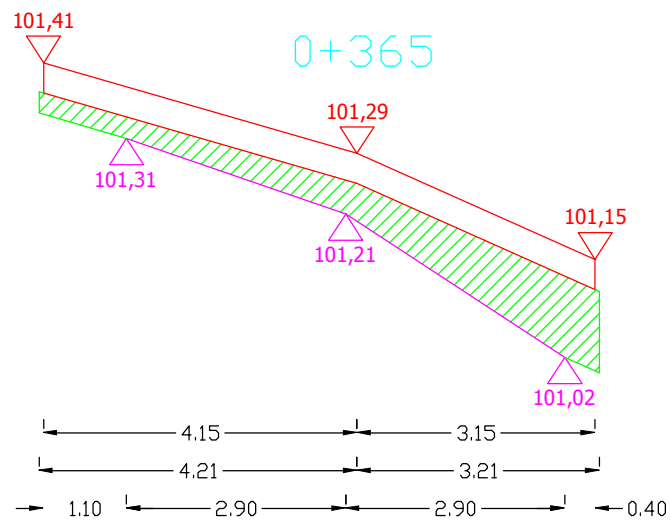
Sporządził:

PRZEKROJE POPRZECZNE DROGI WOJEWÓDZKIEJ NR 655 OD KM 114+295 DO KM 114+940

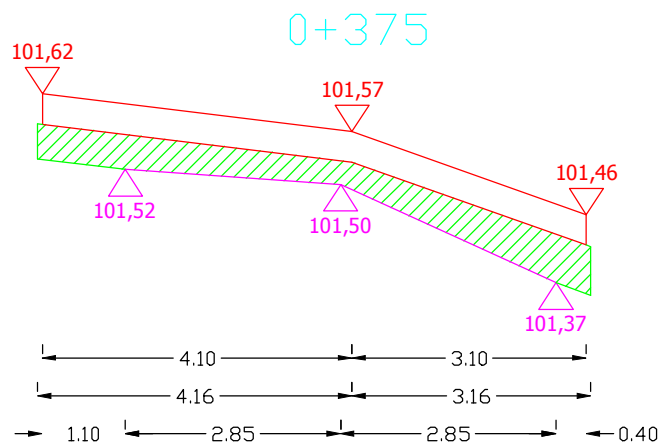
SKALA 1:10/100



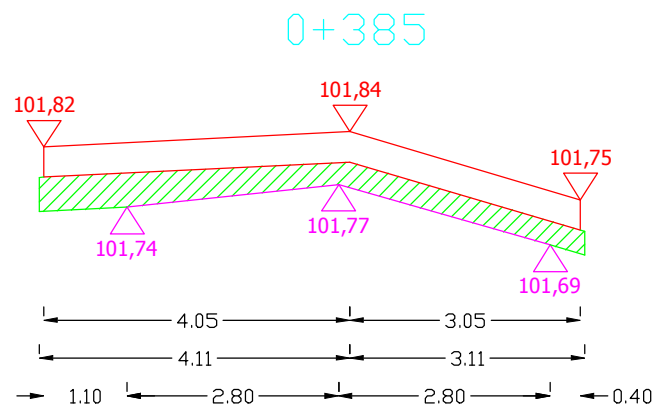
$P_{wyr.} = 0,3658 \text{ m}^2$



$P_{wyr.} = 0,4112 \text{ m}^2$



$P_{wyr.} = 0,3369 \text{ m}^2$



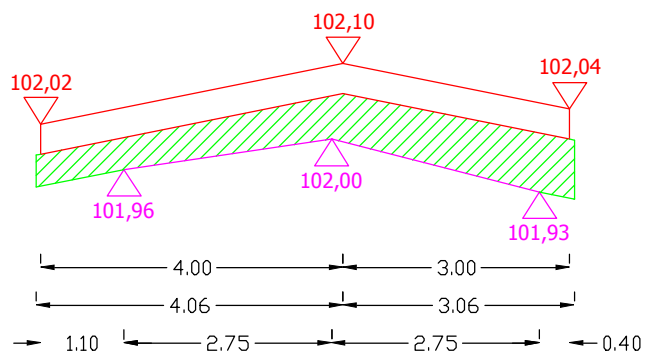
$P_{wyr.} = 0,2642 \text{ m}^2$

Sporządził:

PRZEKROJE POPRZECZNE DROGI WOJEWÓDZKIEJ NR 655 OD KM 114+295 DO KM 114+940

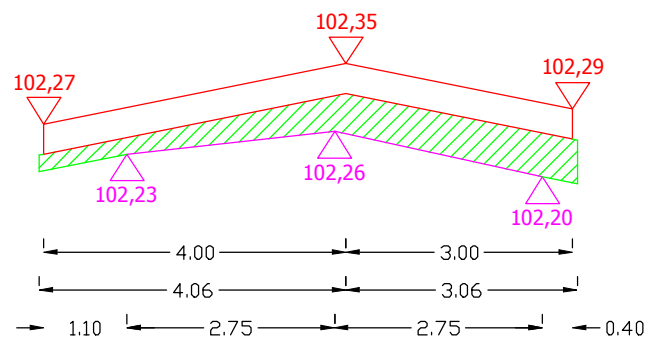
SKALA 1:10/100

0+395



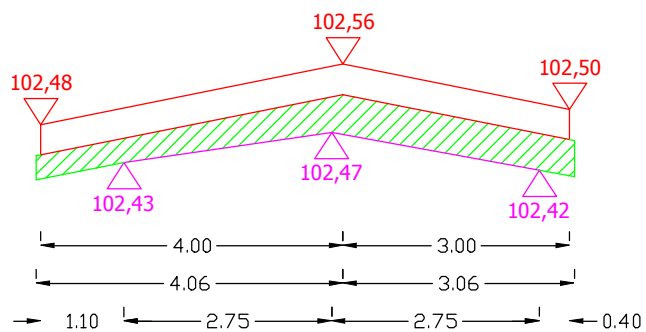
Pwyr.=0,4142 m²

0+405



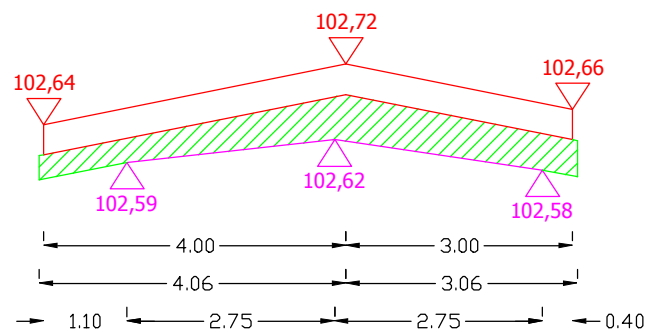
Pwyr.=0,2993 m²

0+415



Pwyr.=0,3063 m²

0+425



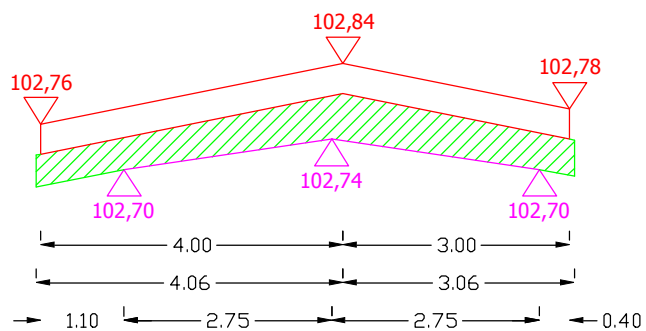
Pwyr.=0,3338 m²

Sporządził:

PRZEKROJE POPRZECZNE DROGI WOJEWÓDZKIEJ NR 655 OD KM 114+295 DO KM 114+940

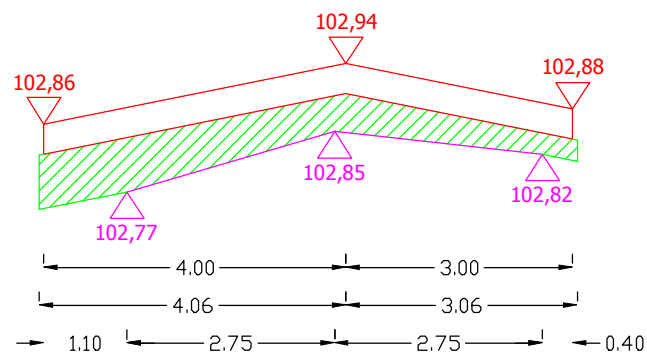
SKALA 1:10/100

0+435



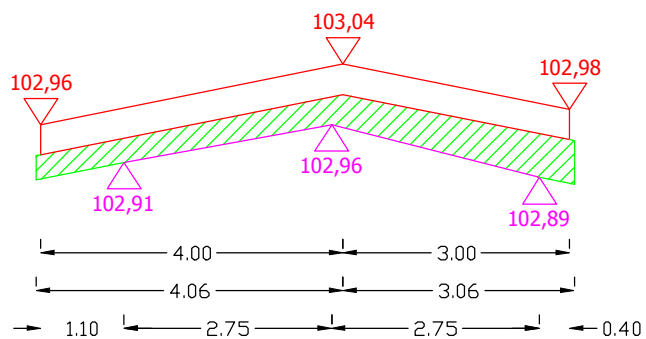
Pwyr.=0,3591 m²

0+445



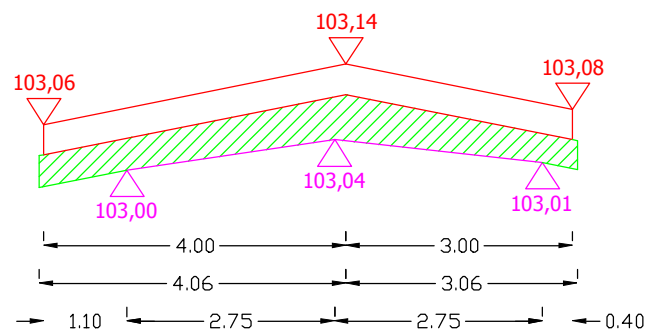
Pwyr.=0,3710 m²

0+455



Pwyr.=0,2971 m²

0+465



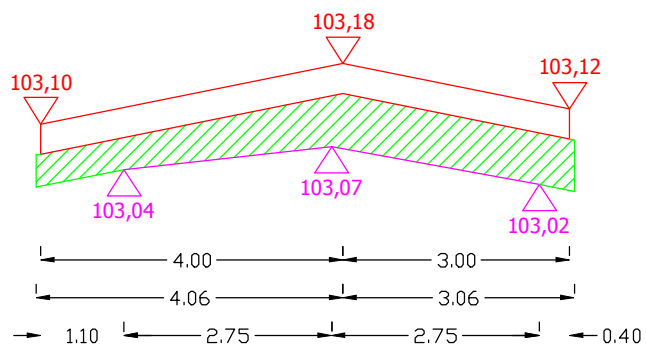
Pwyr.=0,3408 m²

Sporządził:

PRZEKROJE POPRZECZNE DROGI WOJEWÓDZKIEJ NR 655 OD KM 114+295 DO KM 114+940

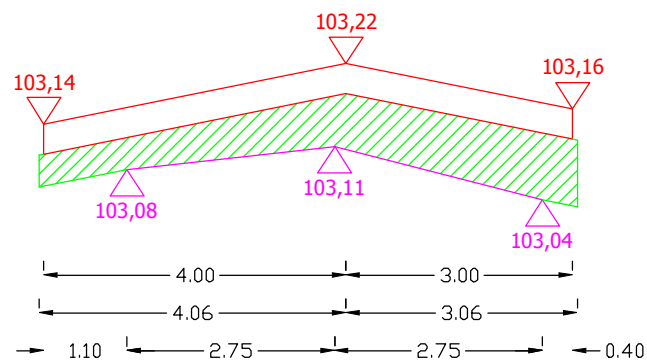
SKALA 1:10/100

0+475



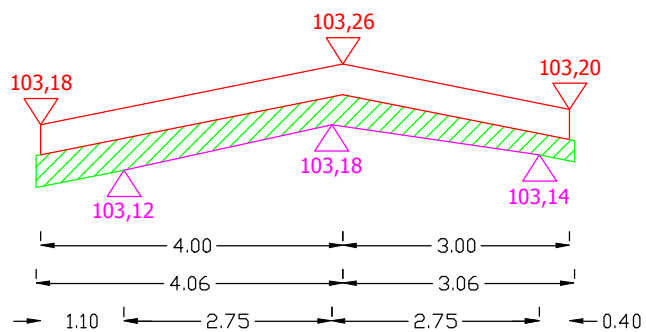
Pwyr.=0,4233 m²

0+485



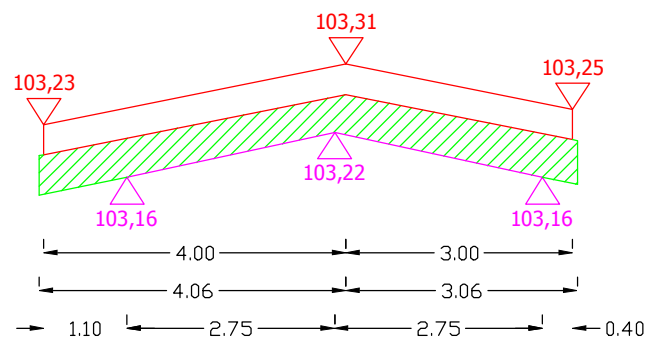
Pwyr.=0,4600 m²

0+495



Pwyr.=0,2674 m²

0+505



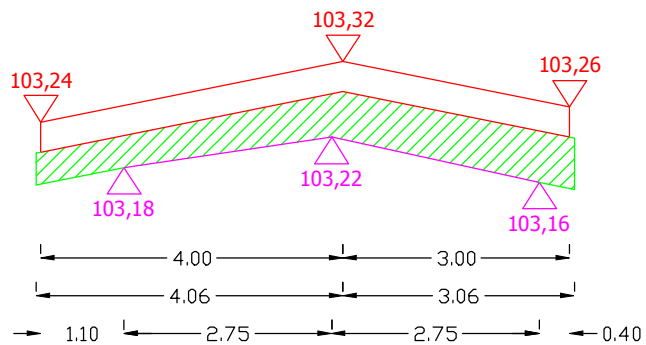
Pwyr.=0,3753 m²

Sporządził:

PRZEKROJE POPRZECZNE DROGI WOJEWÓDZKIEJ NR 655 OD KM 114+295 DO KM 114+940

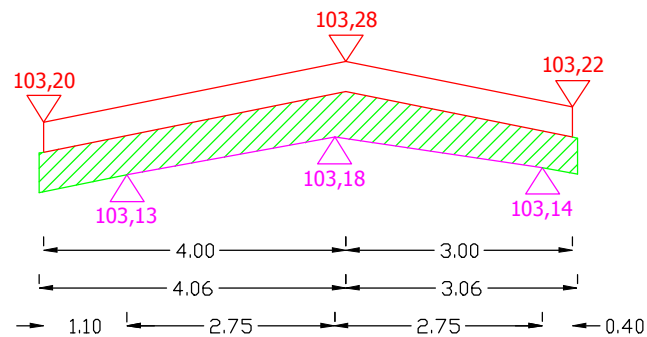
SKALA 1:10/100

0+515



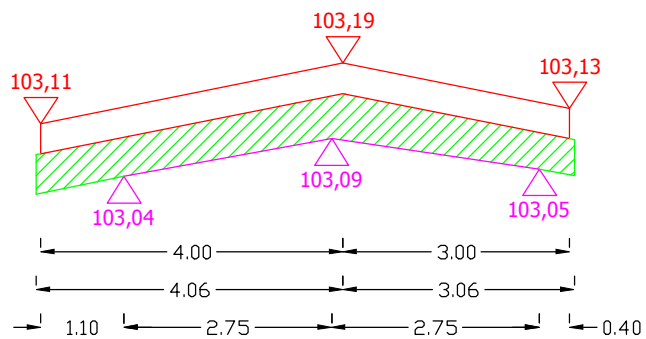
Pwyr.=0,3958 m²

0+525



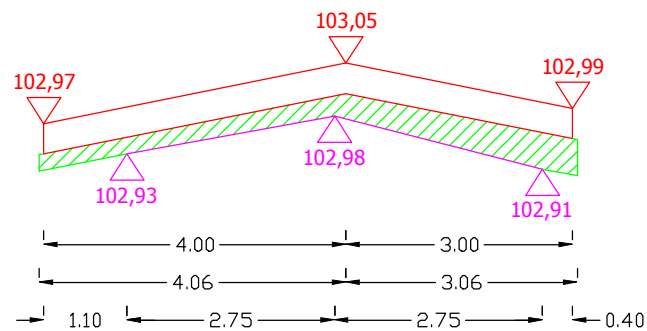
Pwyr.=0,3845 m²

0+535



Pwyr.=0,3845 m²

0+545

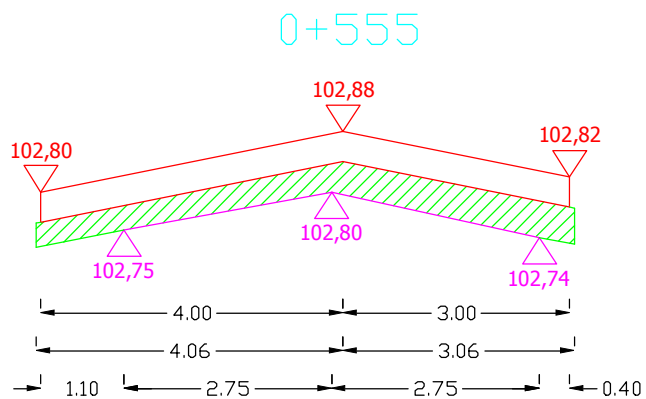


Pwyr.=0,2259 m²

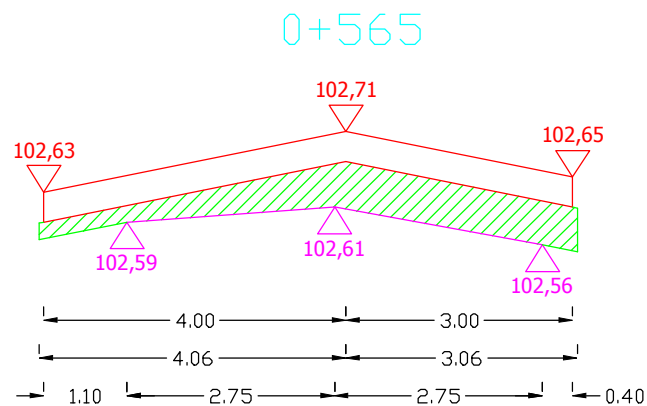
Sporządził:

PRZEKROJE POPRZECZNE DROGI WOJEWÓDZKIEJ NR 655 OD KM 114+295 DO KM 114+940

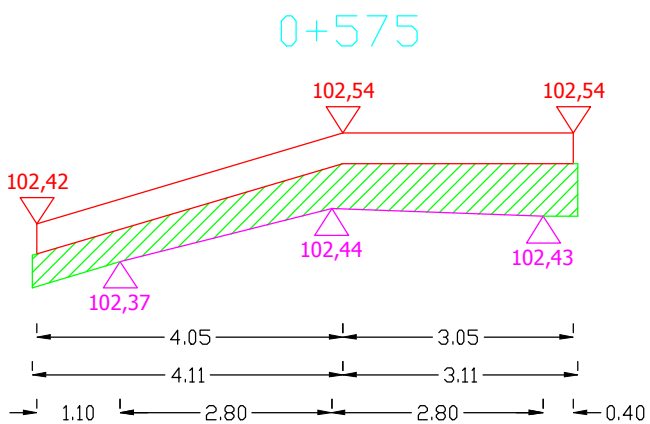
SKALA 1:10/100



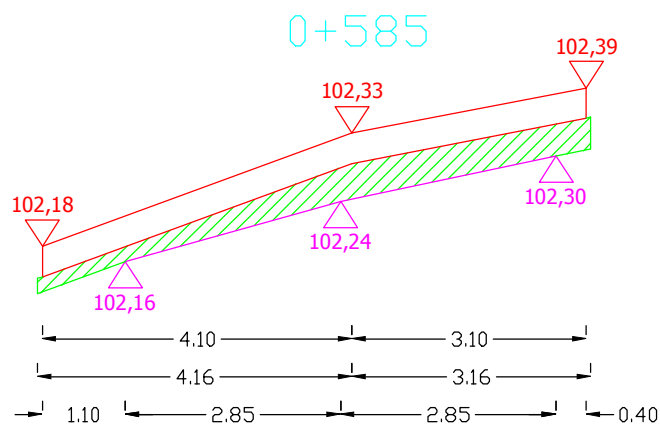
Pwyr.=0,2788 m²



Pwyr.=0,3266 m²



Pwyr.=0,4008 m²

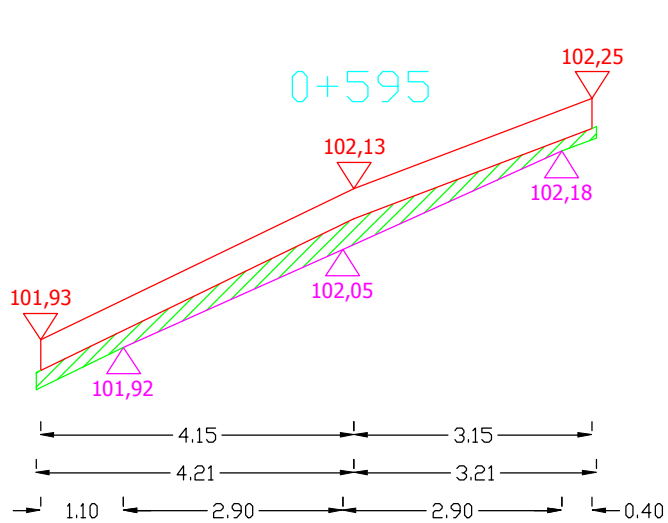


Pwyr.=0,2623 m²

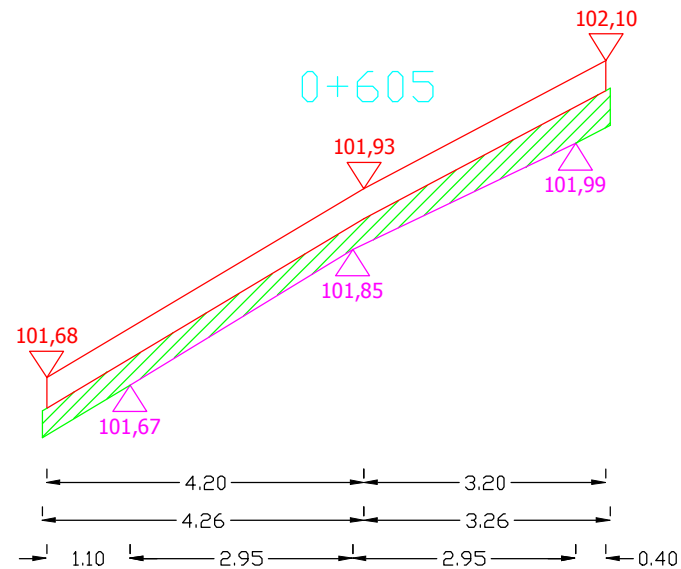
Sporządził:

PRZEKROJE POPRZECZNE DROGI WOJEWÓDZKIEJ NR 655 OD KM 114+295 DO KM 114+940

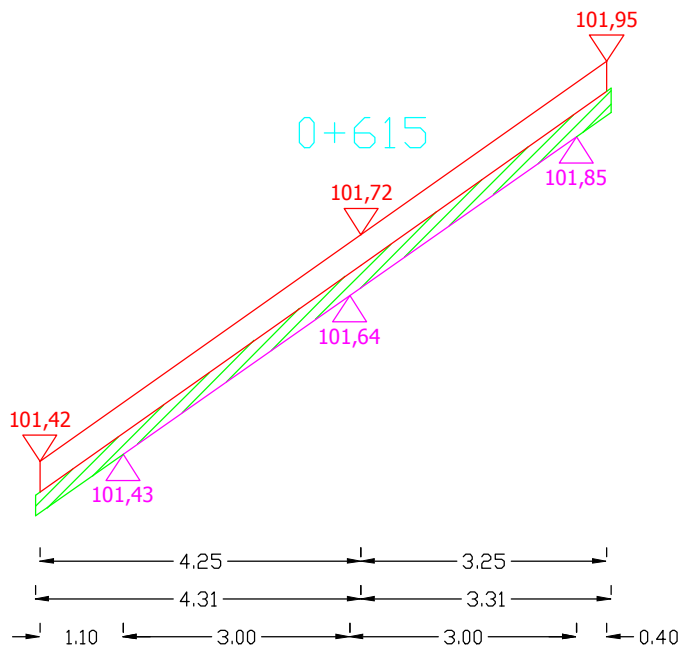
SKALA 1:10/100



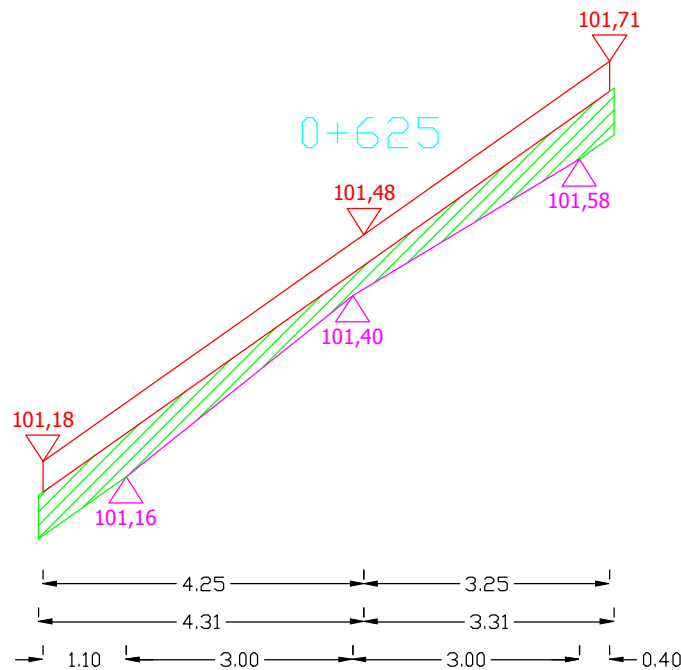
Pwyr.=0,1856 m²



Pwyr.=0,2808 m²



Pwyr.=0,2239 m²

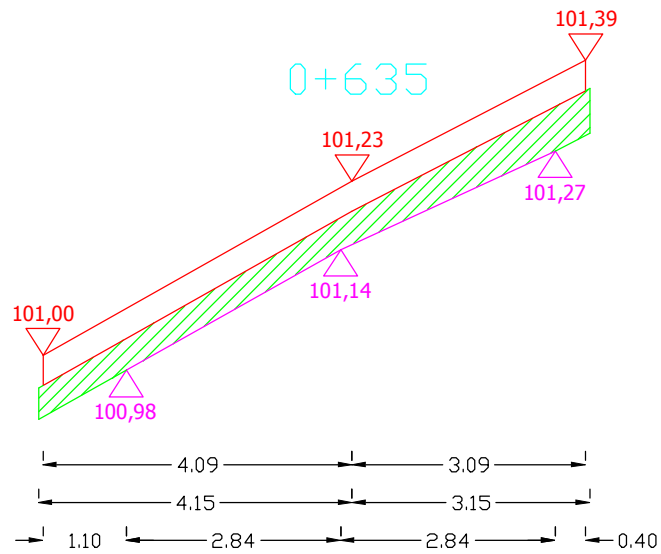


Pwyr.=0,3625 m²

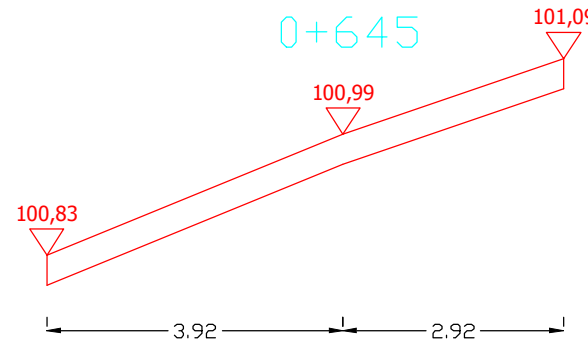
Sporządził:

PRZEKROJE POPRZECZNE DROGI WOJEWÓDZKIEJ NR 655 OD KM 114+295 DO KM 114+940

SKALA 1:10/100



$P_{wyr.} = 0,3384 \text{ m}^2$



$P_{wyr.} = 0,0000 \text{ m}^2$