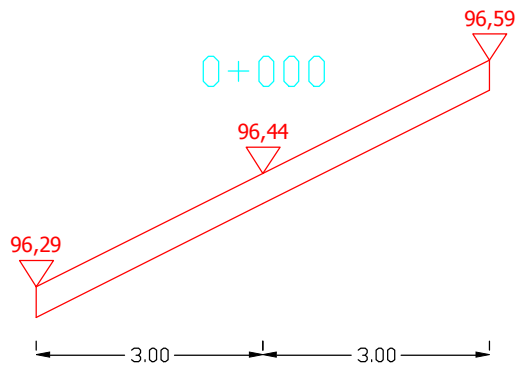
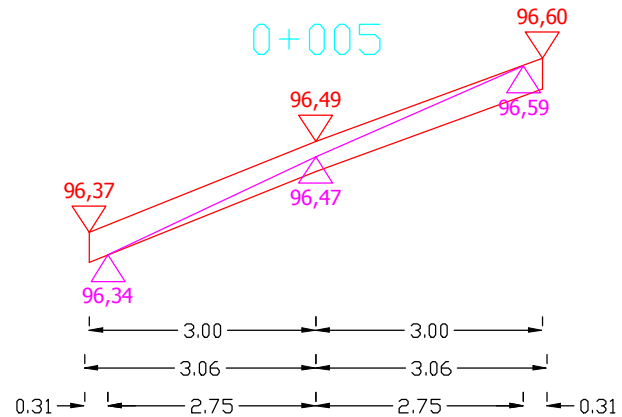


PRZEKROJE POPRZECZNE DROGI WOJEWÓDZKIEJ NR 651 OD KM 89+925 DO KM 90+332

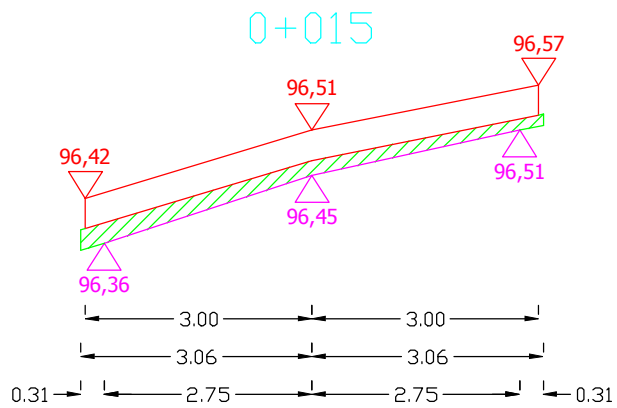
SKALA 1:10/100



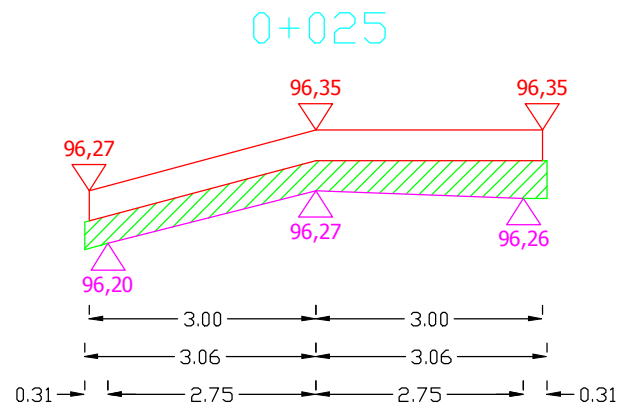
Pwyr.=0,0000 m²



Pwyr.=0,0000 m²



Pwyr.=0,1266 m²



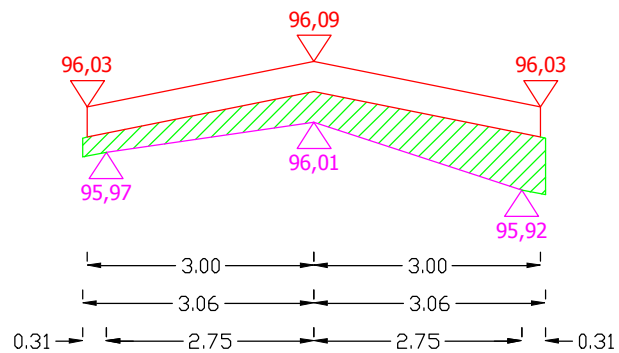
Pwyr.=0,2560 m²

Sporządził:

PRZEKROJE POPRZECZNE DROGI WOJEWÓDZKIEJ NR 651 OD KM 89+925 DO KM 90+332

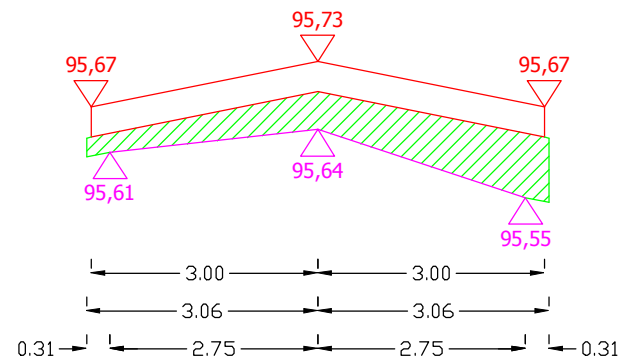
SKALA 1:10/100

0+035



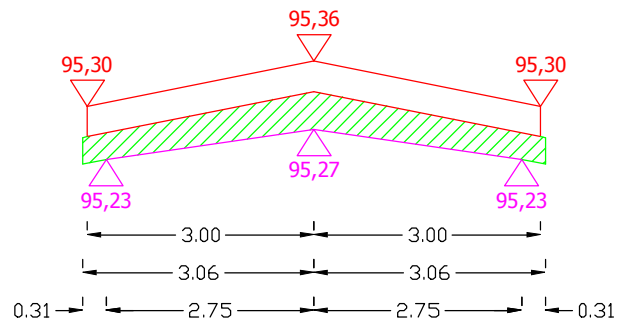
Pwyr.=0,2785 m²

0+045



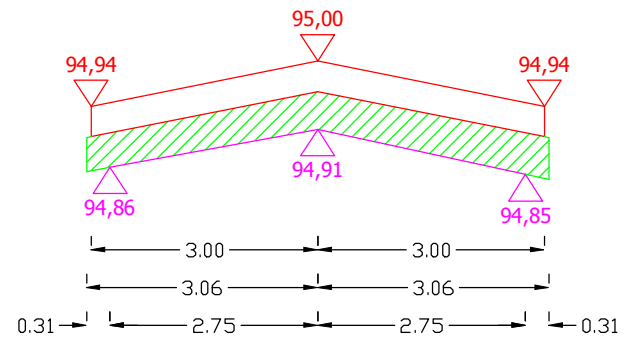
Pwyr.=0,3229 m²

0+055



Pwyr.=0,2555 m²

0+065



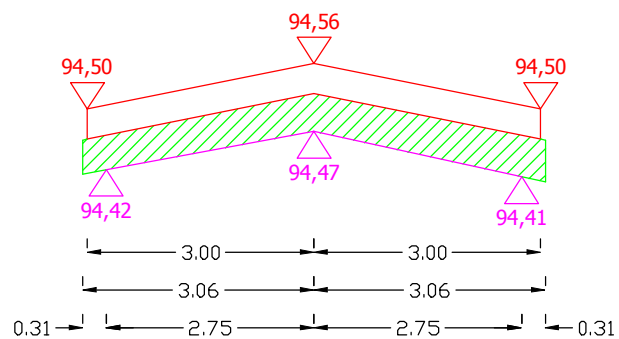
Pwyr.=0,3060 m²

Sporządził:

PRZEKROJE POPRZECZNE DROGI WOJEWÓDZKIEJ NR 651 OD KM 89+925 DO KM 90+332

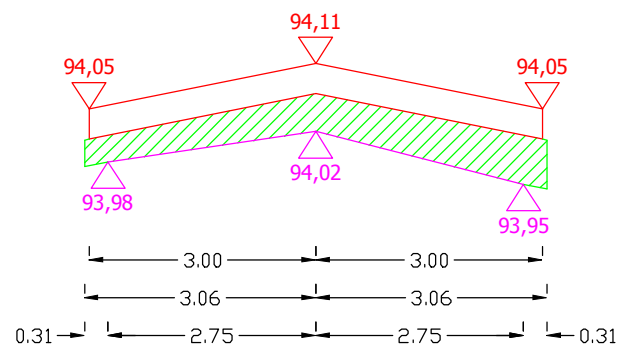
SKALA 1:10/100

0+075



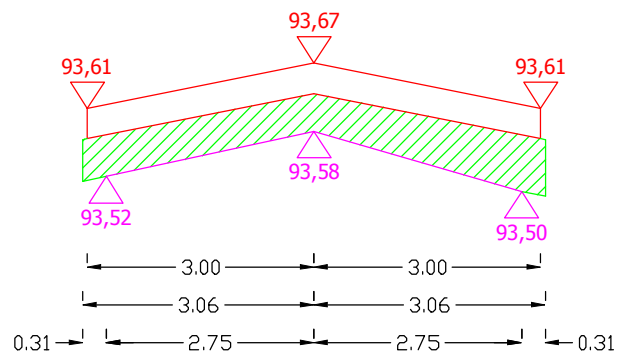
Pwyr.=0,3060 m²

0+085



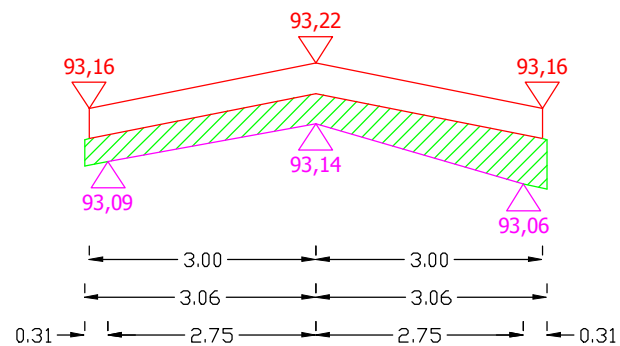
Pwyr.=0,3060 m²

0+095



Pwyr.=0,3566 m²

0+105



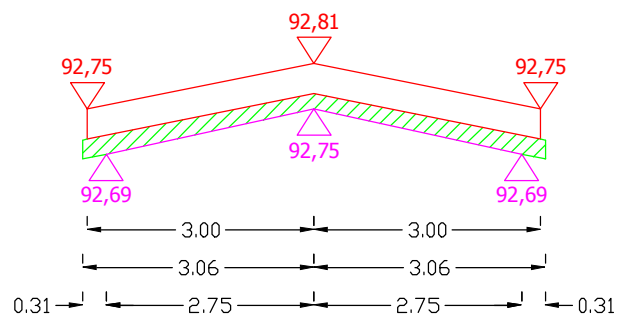
Pwyr.=0,2785 m²

Sporządził:

PRZEKROJE POPRZECZNE DROGI WOJEWÓDZKIEJ NR 651 OD KM 89+925 DO KM 90+332

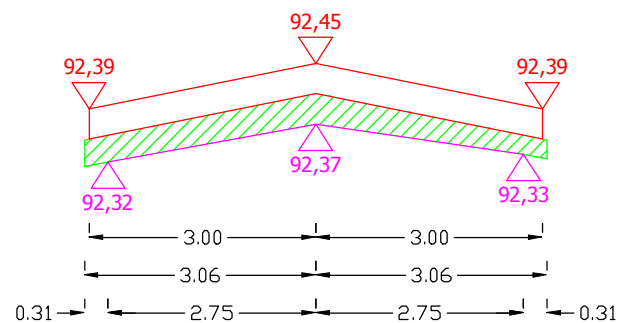
SKALA 1:10/100

0+115



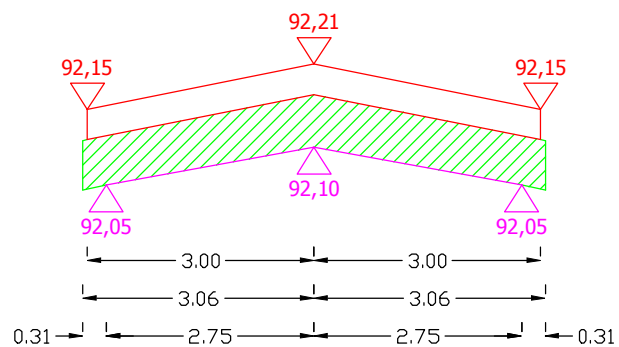
Pwyr.=0,1393 m²

0+125



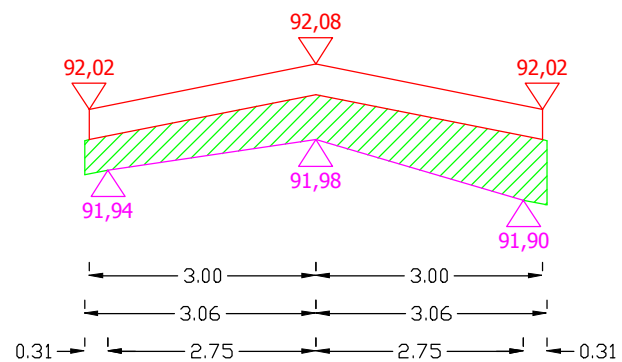
Pwyr.=0,2111 m²

0+135



Pwyr.=0,4116 m²

0+145



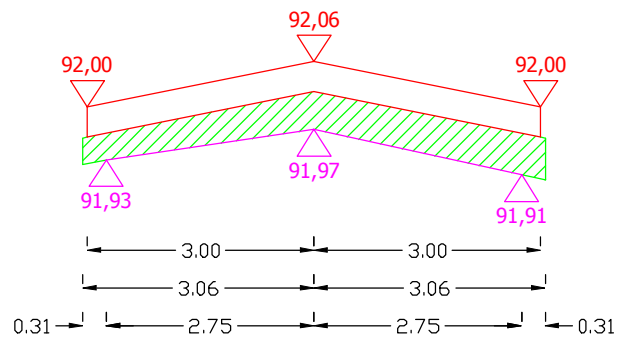
Pwyr.=0,3841 m²

Sporządził:

PRZEKROJE POPRZECZNE DROGI WOJEWÓDZKIEJ NR 651 OD KM 89+925 DO KM 90+332

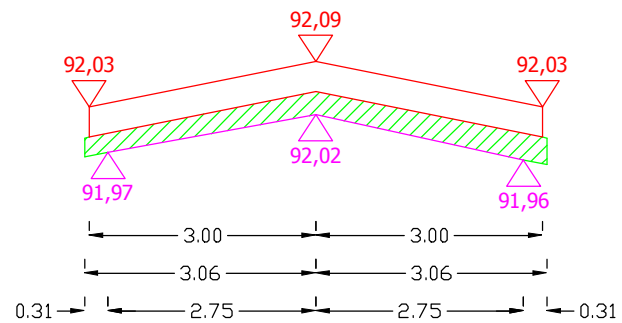
SKALA 1:10/100

0+155



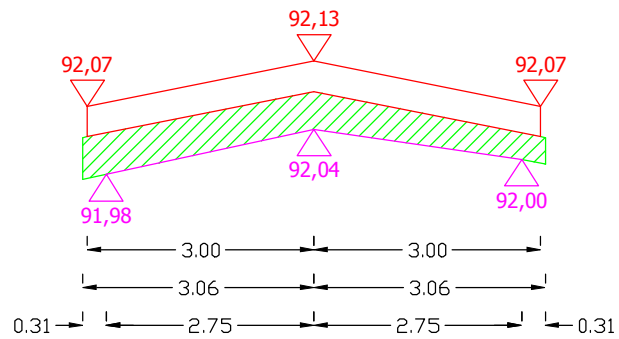
Pwyr.=0,2892 m²

0+165



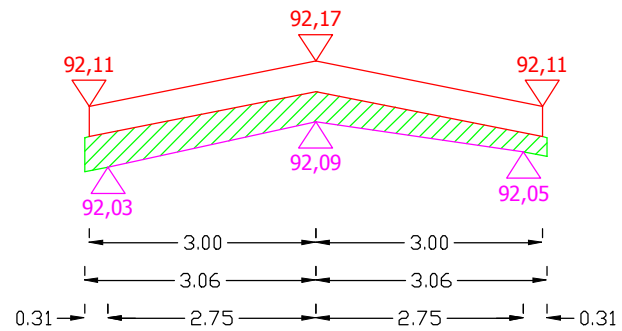
Pwyr.=0,1836 m²

0+175



Pwyr.=0,2892 m²

0+185



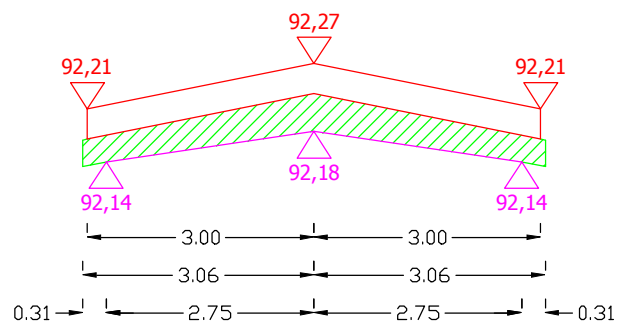
Pwyr.=0,2280 m²

Sporządził:

PRZEKROJE POPRZECZNE DROGI WOJEWÓDZKIEJ NR 651 OD KM 89+925 DO KM 90+332

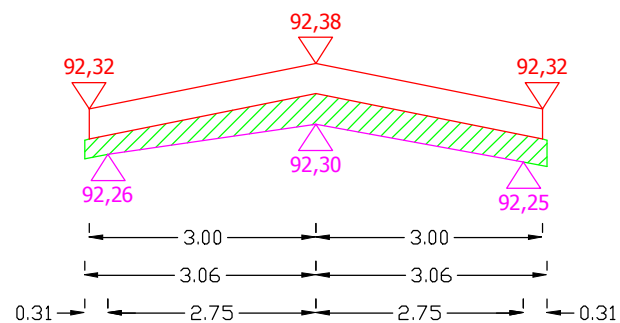
SKALA 1:10/100

0+195



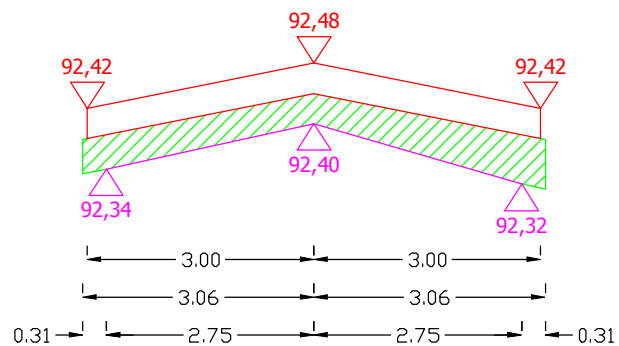
Pwyr.=0,2555 m²

0+205



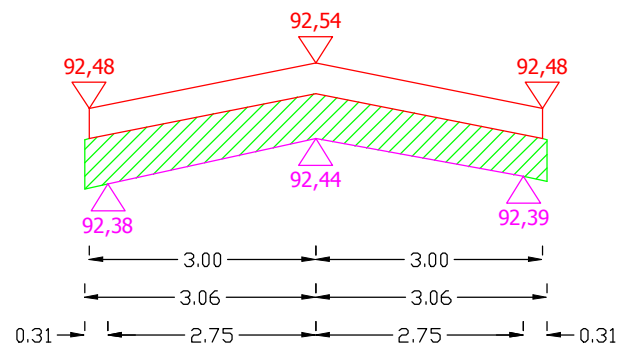
Pwyr.=0,2111 m²

0+215



Pwyr.=0,2954 m²

0+225,50



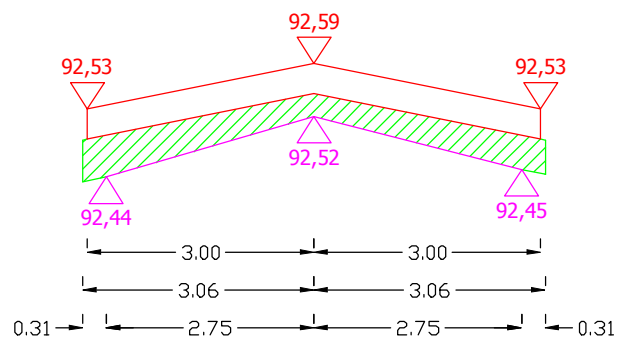
Pwyr.=0,3672 m²

Sporządził:

PRZEKROJE POPRZECZNE DROGI WOJEWÓDZKIEJ NR 651 OD KM 89+925 DO KM 90+332

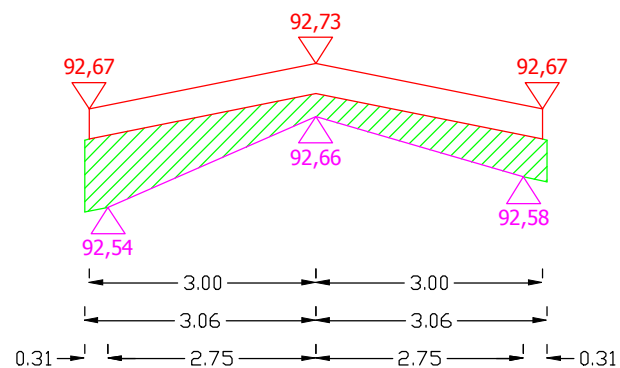
SKALA 1:10/100

0+235



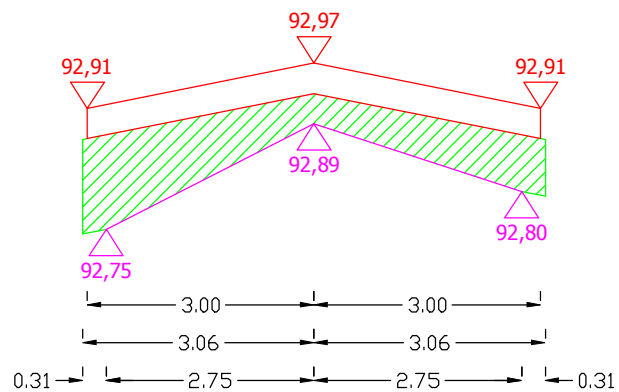
Pwyr.=0,2510 m²

0+245



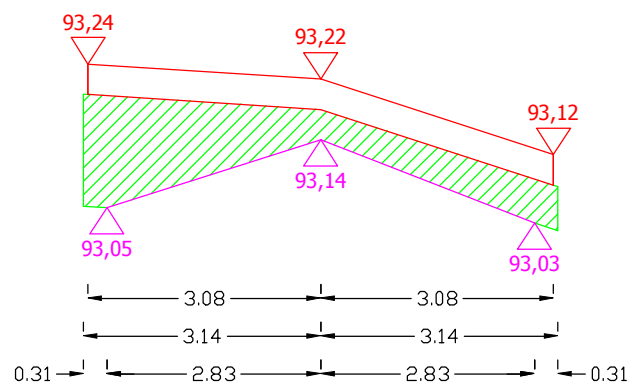
Pwyr.=0,3353 m²

0+255



Pwyr.=0,4470 m²

0+265

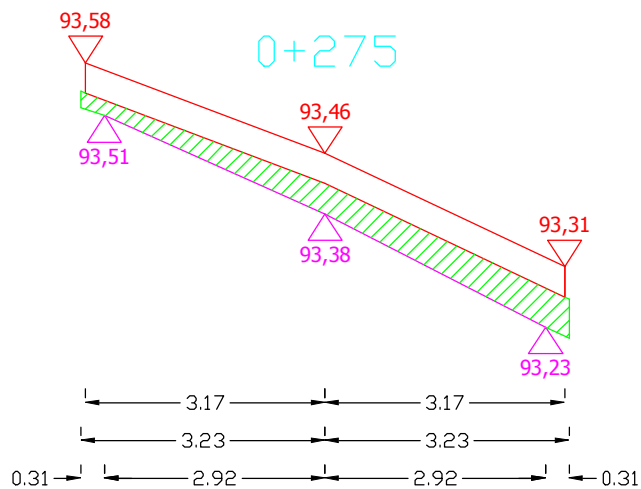


Pwyr.=0,4694 m²

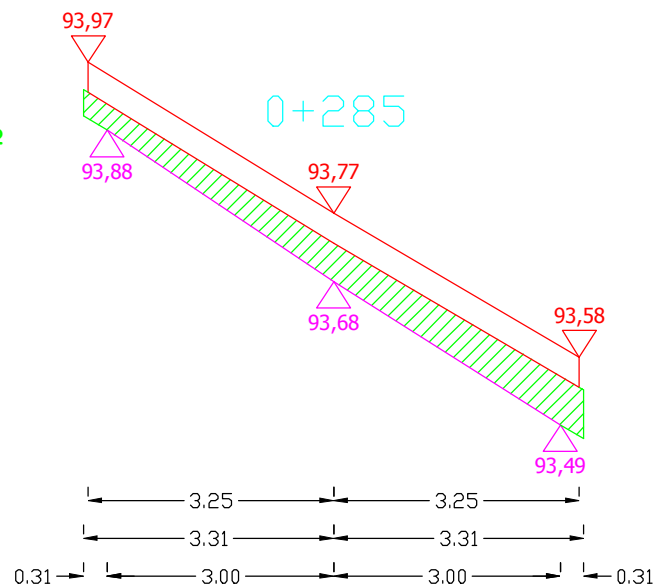
Sporządził:

PRZEKROJE POPRZECZNE DROGI WOJEWÓDZKIEJ NR 651 OD KM 89+925 DO KM 90+332

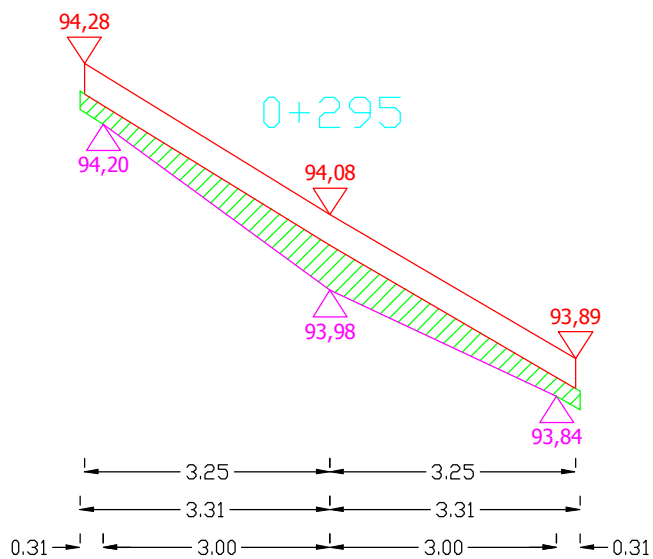
SKALA 1:10/100



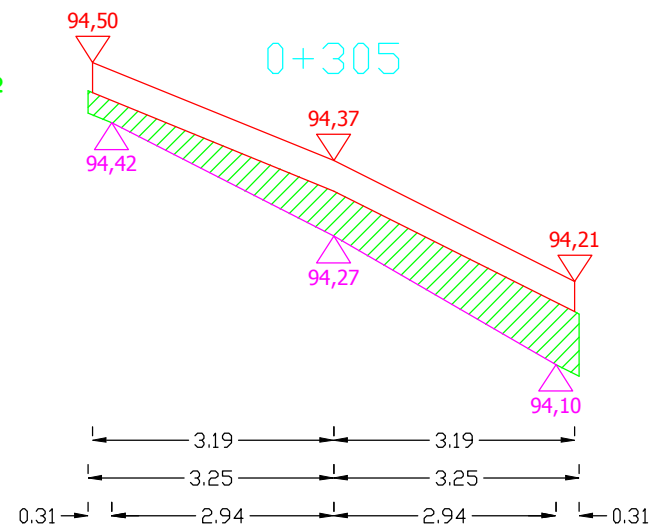
Pwyr.=0,2450 m²



Pwyr.=0,3296 m²



Pwyr.=0,2691 m²

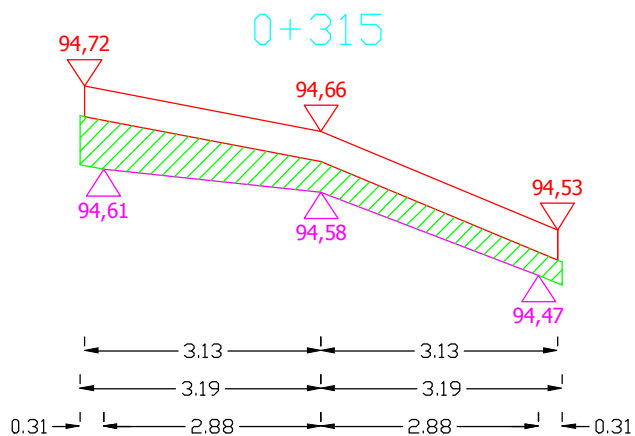


Pwyr.=0,3764 m²

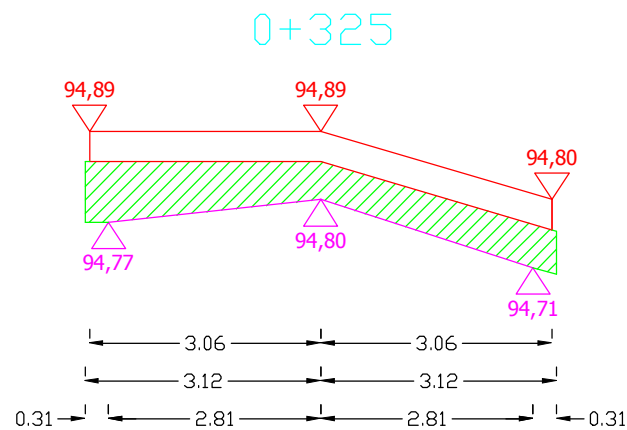
Sporządził:

PRZEKROJE POPRZECZNE DROGI WOJEWÓDZKIEJ NR 651 OD KM 89+925 DO KM 90+332

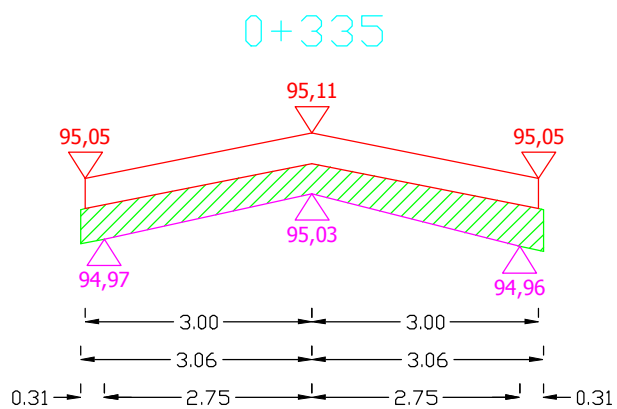
SKALA 1:10/100



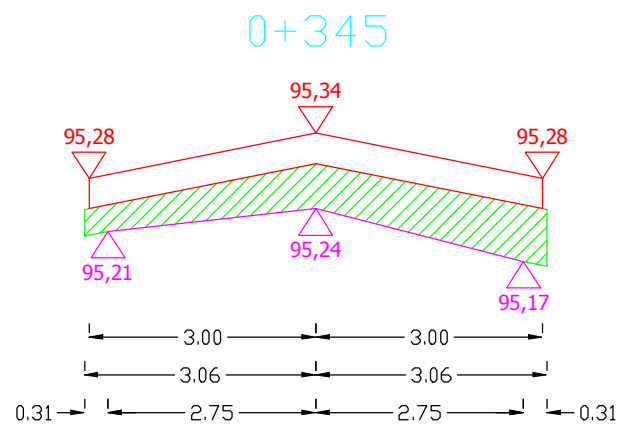
Pwyr.=0,2825 m²



Pwyr.=0,3761 m²



Pwyr.=0,2785 m²



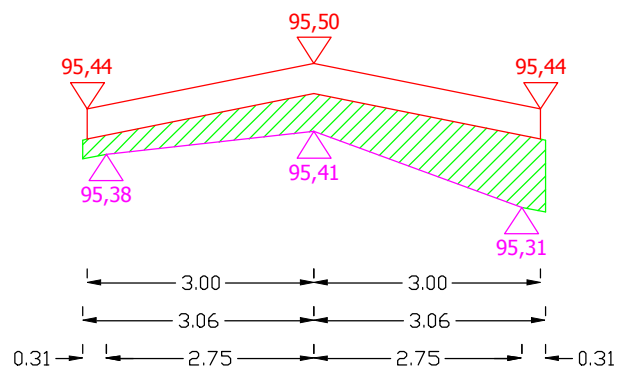
Pwyr.=0,3504 m²

Sporządził:

PRZEKROJE POPRZECZNE DROGI WOJEWÓDZKIEJ NR 651 OD KM 89+925 DO KM 90+332

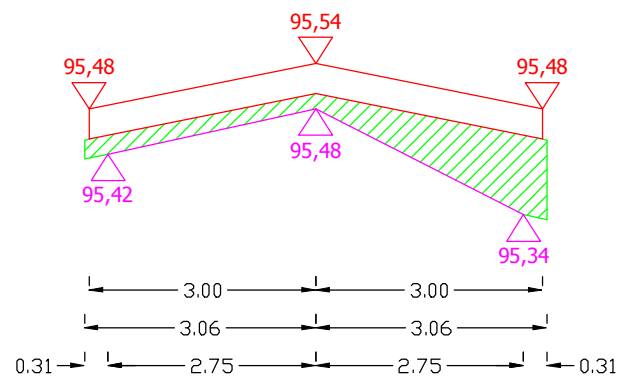
SKALA 1:10/100

0+355



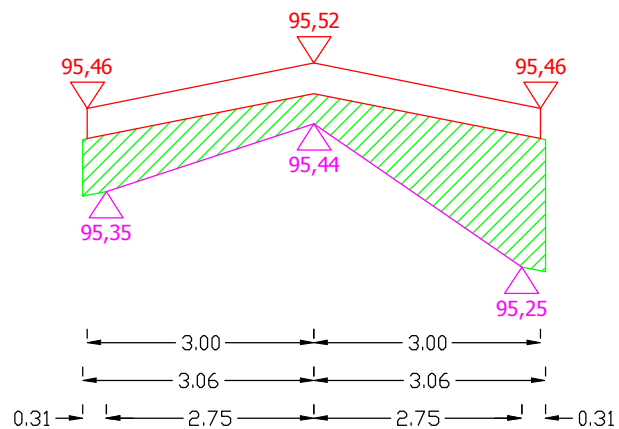
Pwyr.=0,3397 m²

0+365



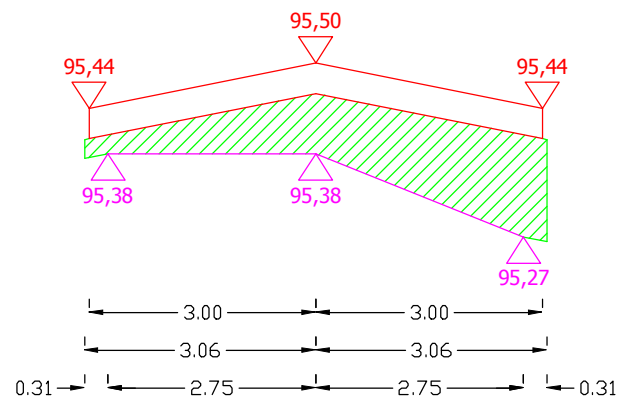
Pwyr.=0,2741 m²

0+375



Pwyr.=0,5313 m²

0+385



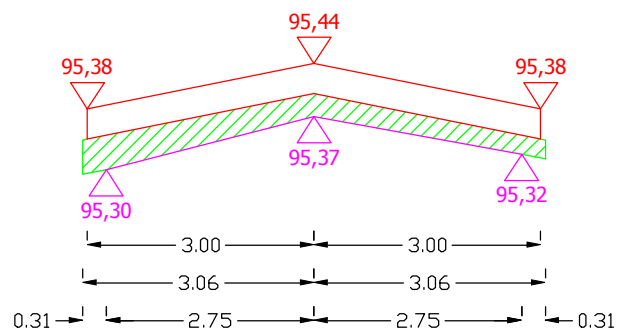
Pwyr.=0,4896 m²

Sporządził:

PRZEKROJE POPRZECZNE DROGI WOJEWÓDZKIEJ NR 651 OD KM 89+925 DO KM 90+332

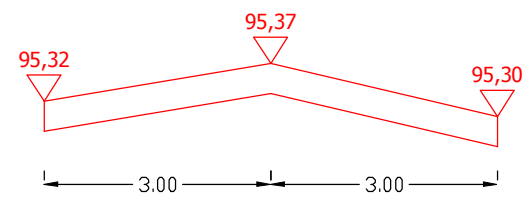
SKALA 1:10/100

0+395



Pwyr.=0,2005 m²

0+407



Pwyr.=0,0000 m²

Sporządził: